



LOWER DUWAMISH WATERWAY UPPER REACH

## Cleanup Construction News

LOWER DUWAMISH  
WATERWAY GROUP

### Cleanup Construction Activities

Construction is ongoing from 7 a.m. to 7 p.m., Monday through Friday and 9 a.m. to 7 p.m. on Saturdays. Movement of barges may occur outside of these work hours.

**This evening**, January 10, work activities will extend beyond standard hours and continue until approximately 10 p.m. near **Sediment Management Area (SMA) 9**, which is on the east shoreline. These activities are part of the sheet pile wall construction and will require lighting to illuminate the work area. Welding operations are anticipated, with noise levels expected to remain typical for construction work.

Also, **this Saturday**, January 11, work activities will begin at 7 a.m. because of favorable tidal conditions. This work will also include sheet pile wall construction.

For questions or concerns, you can reach our team at [info@ldwg.org](mailto:info@ldwg.org) or 1-888-561-LDWG (1-888-561-5394). Please note that in-water construction activities are tide and weather-dependent. All schedules are subject to change.

### Weekly Environmental and Community Report for the week of December 30

You may view the weekly report and other previous weekly reports by clicking the link below.

[Environmental & Community Report](#)

### What to expect during the week of January 13

Cleanup activities will continue in SMAs 2, 3, 4, 6, and 9. See the map of cleanup areas linked below. Cleanup at SMA 7 has been rescheduled to season two of construction

Work at SMA 9 includes continued installation of sheet pile. This may cause higher noise levels.

Contractors will begin backfilling in SMAs where the dredging of contaminated material has been completed to replace it with clean material. Barges will bring the clean material to the SMA, and an excavator on a separate barge will place the material in and around the

dredged area.

SMA 3 will be backfilled first. SMA 4 backfilling may also start this week depending upon the completion of SMA 3.

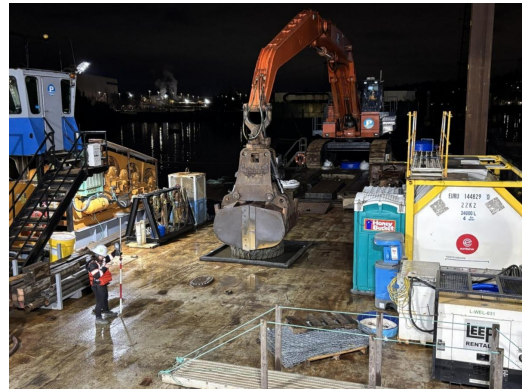
## What to expect during the week of January 20

During the week of January 20, cleanup activities will continue in SMAs 2, 4, and 6.

### Map of cleanup areas



Preparing rail cars for lined and covered transport of dredged material to the landfill. (Photo credit: Geosyntec)



The Contractor's quality control team testing the positioning of the dredge bucket. (Photo credit: Geosyntec)

**Remember, the only Duwamish River seafood that is safe to eat is salmon.** In the Duwamish River, the seafood that spend their entire lives in the river (perch, sole, flounder, crab, mussels, and clams) are unsafe to eat. They have high levels of toxic chemicals (such as PCBs) that you cannot see.

Learn how to protect your health while fishing for seafood that is safe to catch and eat. [Eating Seafood—Public Health Seattle and King County: Fun to Catch, Toxic to Eat.](#)



Visit LDWG website



Send us an email



Visit EPA website

Stay informed during cleanup construction!

Manténgase informado durante toda la actividad de construcción para la

limpieza

Visit our website

Sitio web

Cập nhật thông tin trong quá trình thi công  
để dọn dẹp

Trang web



Give us a call at 1-888-561-5394

LDWG | info@ldwg.org | Seattle, WA 98108 US

[Unsubscribe](#) | [Update Profile](#) | [Constant Contact Data Notice](#)



Try email marketing for free today!