An aerial photograph showing a large-scale construction project on a waterway. In the foreground, a yellow crane barge is positioned next to a white tugboat. The crane is lifting a large red object from the water. In the background, a long wooden pier extends into the water, and a large industrial facility with colorful shipping containers is visible on the shore.

# Community Outreach and Communications Plan Summary

**WITH COMMUNITY IMPACTS  
MITIGATION PLAN**

**LOWER DUWAMISH  
WATERWAY GROUP**



JULY 2024

PHOTO CREDIT: King County



# Introduction

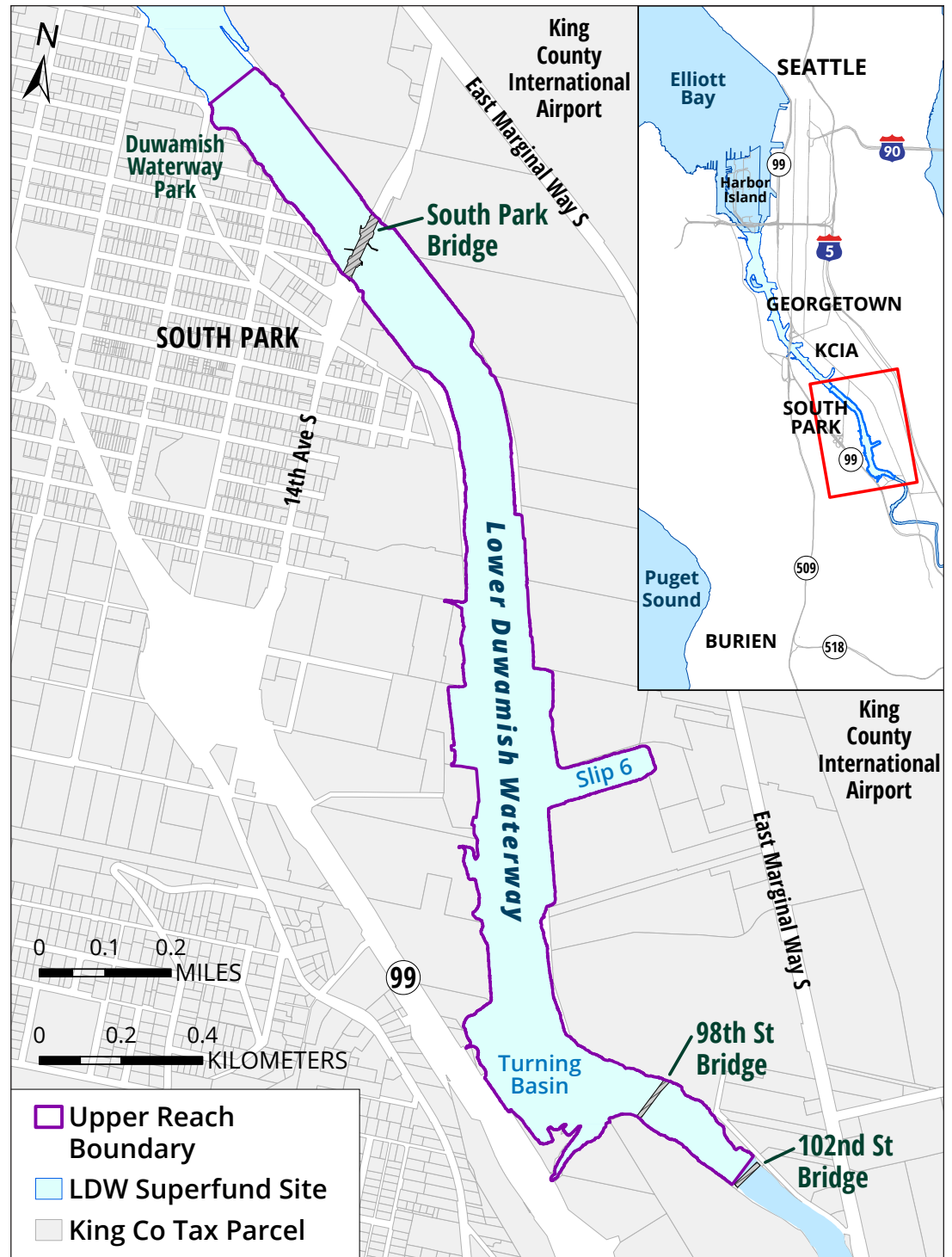
In 2001, the U.S. Environmental Protection Agency (EPA) listed the Lower Duwamish Waterway (LDW) as a Superfund site. The Lower Duwamish Waterway Group (LDWG) has been coordinating with EPA since then to advance the design of cleanup construction.

The Lower Duwamish Waterway Superfund site is divided into three geographical reaches, or segments, for sediment cleanup purposes: lower, middle, and upper. Each reach will have its own cleanup design and construction schedule.

Clean up of the upper reach is scheduled to begin in October 2024.

## Purpose of the Community Outreach and Communications Plan

This document is a summary of the Community Outreach and Communications Plan. The full document can be viewed at [www.LDWG.org](http://www.LDWG.org). The plan outlines actions LDWG will take to engage community members before and during construction of the upper reach. It also identifies community concerns and priorities related to construction activities to help LDWG and EPA address concerns where possible.

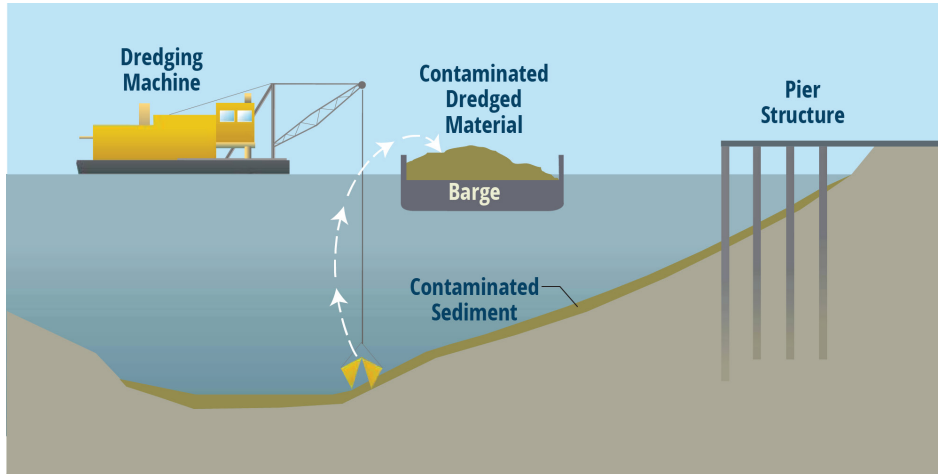


The above map shows the upper reach of the Lower Duwamish Waterway.

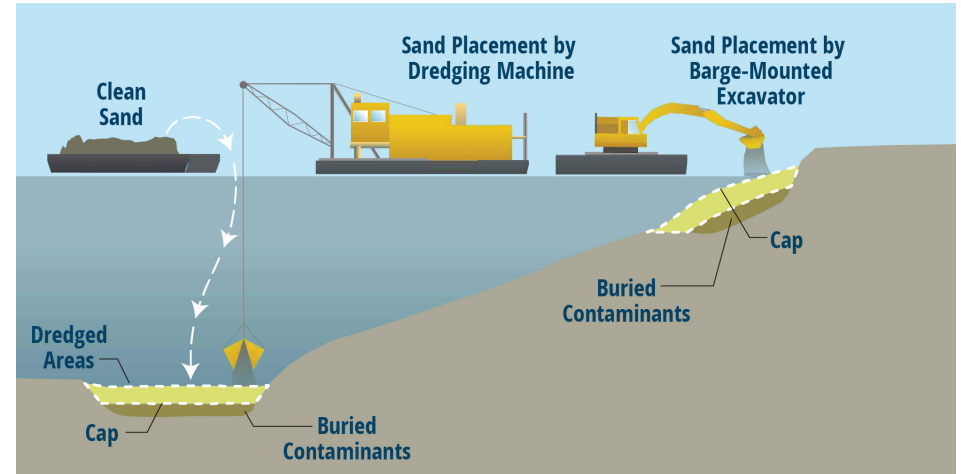
CREDIT: LDWG

# Contaminated Sediment Cleanup Technologies

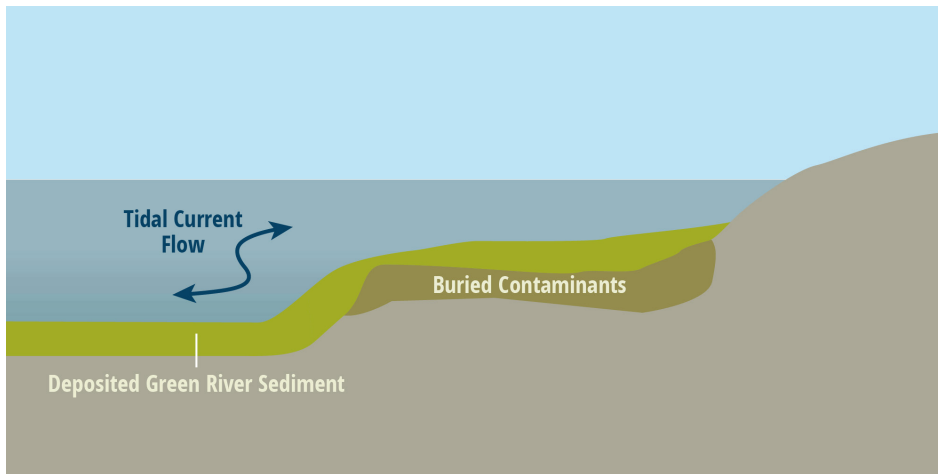
The remedial activities in the upper reach include a combination of the cleanup technologies shown below.



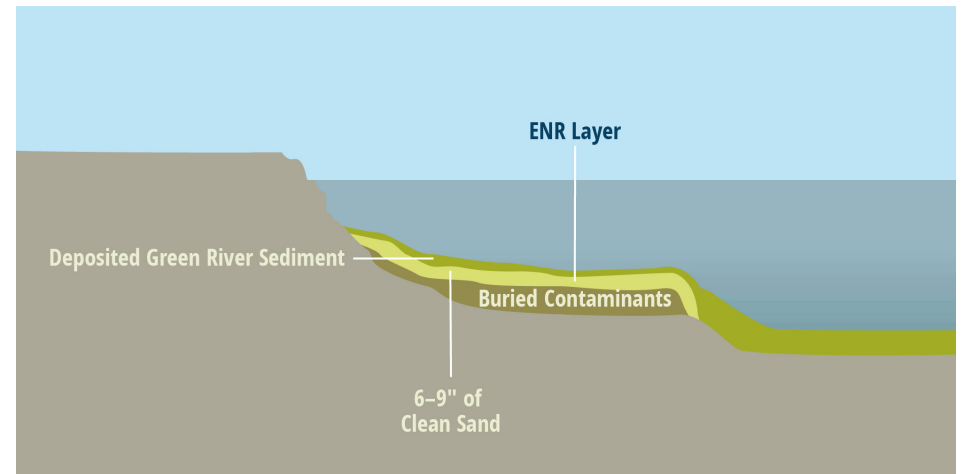
**DREDGING** removes contaminated sediments from the waterway. Dredging will generally occur upstream to downstream. After removal, dredged material will be transported by barge then transferred to land. Material is then transported to and disposed of in a permitted landfill.



**CAPPING** covers the contaminated sediments with engineered layers of sand, gravel and rock to contain and isolate the contamination.



**MONITORED NATURAL RECOVERY** relies on the movement of cleaner sediments from upriver to mix with low to moderately contaminated sediments in the waterway, ultimately reducing concentrations in surface sediments. The sediments are monitored to measure contamination reduction over time.



**ENHANCED NATURAL RECOVERY** uses a thin layer of clean sand to speed up the natural recovery process.

# What You Can Expect During Construction

Construction in the upper reach will take place within specific areas of the LDW between Duwamish Waterway Park and the South 102nd Street bridge. Construction activities will occur during the months of October through mid-February for three years and are anticipated to begin in October 2024.

Many details of the upper reach cleanup are still being planned, but in general, the public can expect to see:

- ▶ Construction equipment on the waterway including barges for carrying clean sand or contaminated dredged sediment, barges with a crane attached, and tugboats to move the barges around.
- ▶ Construction workers using certain shoreline areas adjacent to the LDW for storing construction equipment and transferring dredged sediment from barge to the shoreline area, and then to railcars for transport to the landfill.
- ▶ Workers driving vehicles, parking, moving barges on the river with tugboats, and using heavy equipment.
- ▶ Boats with workers on the waterway collecting samples of water and sediment for testing.
- ▶ Workers having to work into the night at times, due to tides and other factors.
- ▶ Workers using lights and construction equipment that will generate noise.



*Aerial image of the Lower Duwamish Waterway.*

PHOTO CREDIT: LDWG

## Outreach and Communications Goals

- ▶ Identify community issues, concerns and priorities prior to sediment cleanup to help minimize community impacts to the extent possible.
- ▶ Notify the community before cleanup construction begins.
- ▶ Provide easy and accessible ways for people to learn about cleanup construction and communicate with the project team.
- ▶ Interact directly with shoreline property owners, tenants, businesses and waterway users most affected by construction.
- ▶ Promote public awareness and participation in local hire and job training programs.

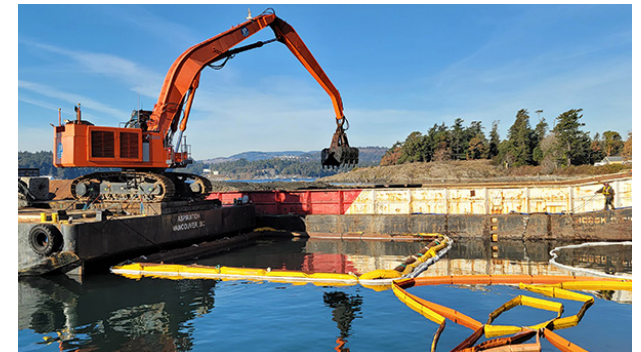


PHOTO CREDIT: WINDWARD ENVIRONMENTAL LLC

*Hydraulic excavators remove contaminated sediment from the river bottom.*



# Proposed Communications and Outreach Methods and Activities



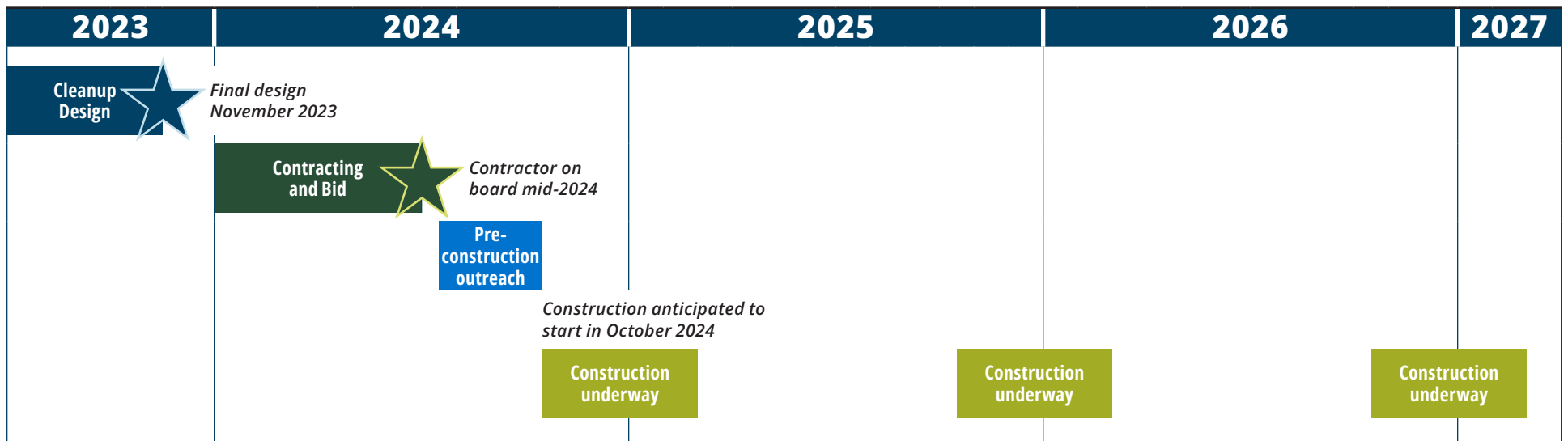
**KEY:** ● Activities during pre-construction ● Activities during construction



PHOTO CREDIT: LDWG

Community members during the 2022 LDWG Boat Tour on the Lower Duwamish Waterway.

# Communications and Construction Timeline for the Upper Reach



# Environmental Justice

The burden of industrial pollution from historical and current practices, and the potential impacts of the cleanup, are environmental justice issues for the Duwamish Valley. Through the Community Outreach and Communications Plan, we gathered community concerns related to construction activities to help LDWG, the EPA and other people working on the cleanup understand and work to address impacts and community concerns. We strived to do this in an equitable way.



Youth participants on the 2022 Lower Duwamish Boat Tour hosted by LDWG.

PHOTO CREDIT: LDWG

## Equitable Outreach Strategies

Inclusive outreach and communications helps the community have a voice during construction. The project team will use the following outreach strategies:

- ▶ Translating core communications materials to Spanish, Khmer and Vietnamese. These languages are chosen based on previous community feedback.
- ▶ Writing outreach materials in plain language.
- ▶ Using local interpretation services whenever possible.
- ▶ Distributing copies of written materials in addition to providing online resources.
- ▶ Sending mailers for major project announcements.
- ▶ Partnering with multicultural media to help share major project information.
- ▶ Using visual aids such as diagrams, photographs and maps as much as possible.
- ▶ Being careful to not overburden the community with information or requests.



# Understanding Community Concerns about Construction

LDWG works to understand community concerns related to:

- ▶ Maritime, truck and rail traffic
- ▶ Water quality and habitat
- ▶ Quality of life (noise and light)
- ▶ Recreational access to the river and parks
- ▶ Economy and jobs
- ▶ Public communications during construction
- ▶ Fishing
- ▶ Impacts to people who live and gather in the area

This plan is a living document that may be updated as new information is learned.



Lower Duwamish Waterway, looking south. PHOTO CREDIT: King County



Community members during the 2022 LDWG Boat Tour on the Lower Duwamish Waterway.

PHOTO CREDIT: LDWG

# Community Impacts Mitigation Plan

## Purpose of the Community Impacts Mitigation Plan

The Community Impacts Mitigation Plan (CIMP) incorporates and builds upon the Community Outreach and Communications Plan. This CIMP identifies potential impacts and outlines how the EPA, members of LDWG, and the construction Contractor will address these impacts on the community during upper reach cleanup construction.

## Community Feedback

For over 20 years, LDWG has been working with federal, state, and local agencies, as well as community groups to engage with Duwamish Valley communities. In 2023, LDWG reached out to these communities to better understand their concerns about the upper reach cleanup construction activities. Here's what we did during this community engagement:

- ▶ Conducted several conversations with businesses and organizations
- ▶ Attended community events to speak with the public, in partnership with the EPA
- ▶ Distributed a mailer to properties in South Park and parts of Georgetown
- ▶ Distributed flyers at community gathering hubs in South Park and Georgetown
- ▶ Shared a community survey in multiple languages



PHOTO CREDIT: STEPHERSON & ASSOCIATES



# Reducing Community Impacts

Below is a summary of some of the community impacts and an overview of how we will address them. This list does not include all the potential impacts and mitigation tactics outlined in the CIMP. For the full list, visit [www.LDWG.org](http://www.LDWG.org) to read the full CIMP document.

## We will limit the construction impacts on contamination spread by:

- ▶ Following strict dredging guidelines and best practices, such as using closed buckets to dredge the sediment, when possible, to minimize further spread.



PHOTO CREDIT: KING COUNTY

## We will limit the construction impacts on water quality by:

- ▶ Monitoring water quality throughout construction to confirm dredging is being conducted as required and taking steps to adjust processes if needed.

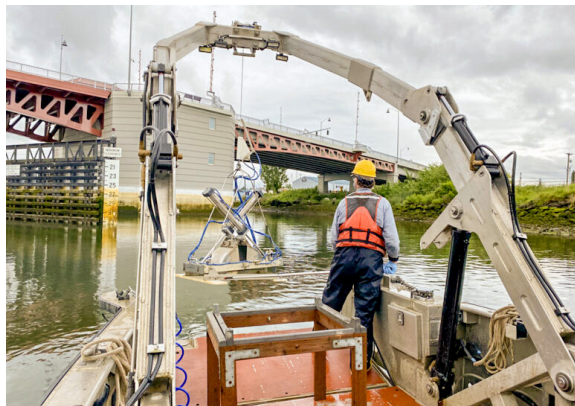


PHOTO CREDIT: WINDWARD ENVIRONMENTAL LLC

## We will limit the impacts on intertidal and shallow subtidal habitats by:

- ▶ Restoring habitats to their original elevations (height) after construction by placing clean sand to rebuild the riverbed and benefit fish foraging.



PHOTO CREDIT: PORT OF SEATTLE

## We will limit impacts on air quality, odor, noise, and light by:

- ▶ Ensuring adherence to federal, state, and local ordinances.
- ▶ Using best practices to reduce fuel consumption and carbon emissions, reduce the amount of light that affects nearby residents, and for dust control.

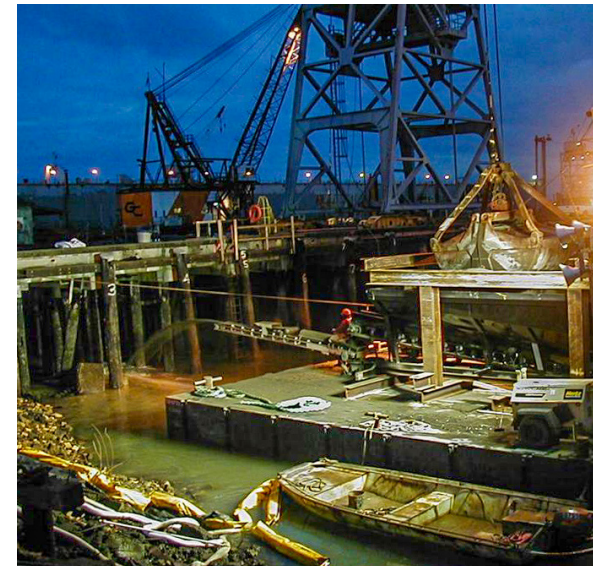


PHOTO CREDIT: FLOYD SNIDER AND KPFF



**We will limit impacts on businesses, residents, and liveboard communities by:**

- ▶ Maintaining regular communication with waterfront businesses and nearby residents.
- ▶ Providing advanced notice of nighttime work to those affected.



PHOTO CREDIT: JOE MABEL, WIKIMEDIA

**We will limit impacts on park access and recreation by:**

- ▶ Conducting most construction activities on the waterway and private, controlled properties (for staging), so upland access to parks and shorelines won't be restricted. Access to the waterway from public parks in the upper reach may have temporary access limitations when the contractor is working nearby.



PHOTO CREDIT: KING COUNTY WASTEWATER TREATMENT DIVISION

**We will limit impacts on fish, people who fish, and maritime traffic by:**

- ▶ Scheduling the activities that use heavy construction equipment to the approved in-water work window that limits impacts to certain fish species.
- ▶ Coordinating with local tribal fisheries.
- ▶ Maintaining safety buffer zones around construction equipment.
- ▶ Allowing for commercial vessel passage.



PHOTO CREDIT: KING COUNTY

**We will limit impacts on roadway traffic by:**

- ▶ Using barges and rail transport to move materials and reduce local truck traffic.
- ▶ Minimizing and providing advanced public notice for any prolonged South Park Bridge openings.



PHOTO CREDIT: KING COUNTY WASTEWATER TREATMENT DIVISION.



# Addressing Community Concerns during Construction

The project team recognizes that new concerns or impacts may arise during construction that we haven't anticipated. Within the CIMP, we've outlined how we will create a two-way dialogue using a project phone line and email inbox, so the community can reach out with concerns or questions.

The CIMP includes an internal response protocol, which our team will use to promptly address topics or concerns. Our process to address community concerns includes:

1. Discussing the topic with the Contractor and the EPA
2. Changing operations as appropriate
3. Responding to the audience who expressed concern
4. Monitoring outcomes



PHOTO CREDIT: KING COUNTY WASTEWATER TREATMENT DIVISION.

## Communicating with Community

The project team will provide ongoing updates to the community through educational signage, a project website, and regular email updates. If you have any questions or concerns regarding cleanup activities, you can reach out to our team via the construction phone line and email inbox.



**Call us: 1-888-561-5394  
(1-888-561-LDWG)**



**Email us: [info@ldwg.org](mailto:info@ldwg.org)**



**Connect with us at events**



**Visit [LDWG.org](http://LDWG.org)**



**View informational signage at public access points**



## About LDWG

The Lower Duwamish Waterway Group (LDWG) is a public-private partnership that is committed to advancing the EPA-led cleanup of the Lower Duwamish.

**Interested in receiving upper reach cleanup construction updates in the future?**

*Email [info@ldwg.org](mailto:info@ldwg.org) and we will add you to the list.*

*Do you have feedback on the Draft Community Impacts Mitigation Plan?*

**WE WELCOME FEEDBACK  
ON THE DRAFT CIMP BY AUGUST 12!**

If you have feedback to share about the draft CIMP, please email Laura Knudsen by August 12, at [knudsen.laura@epa.gov](mailto:knudsen.laura@epa.gov) or feel free to fill out this short [CIMP Interest Form](#).

## Contact Us!



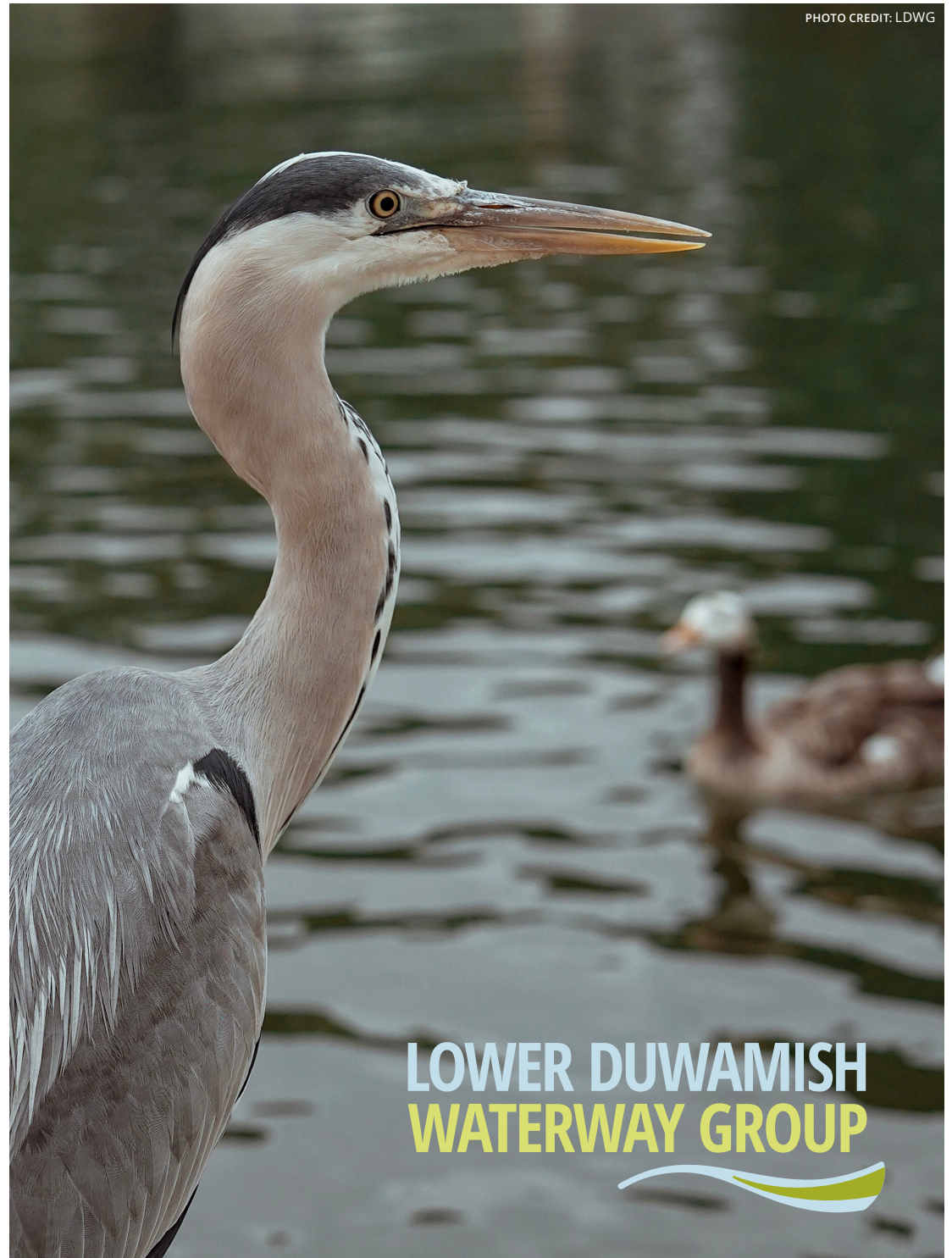
Call us:  
1-888-561-5394  
(1-888-561-LDWG)



Email us:  
[info@ldwg.org](mailto:info@ldwg.org)



Visit:  
[LDWG.org](http://LDWG.org)



**LOWER DUWAMISH  
WATERWAY GROUP**

