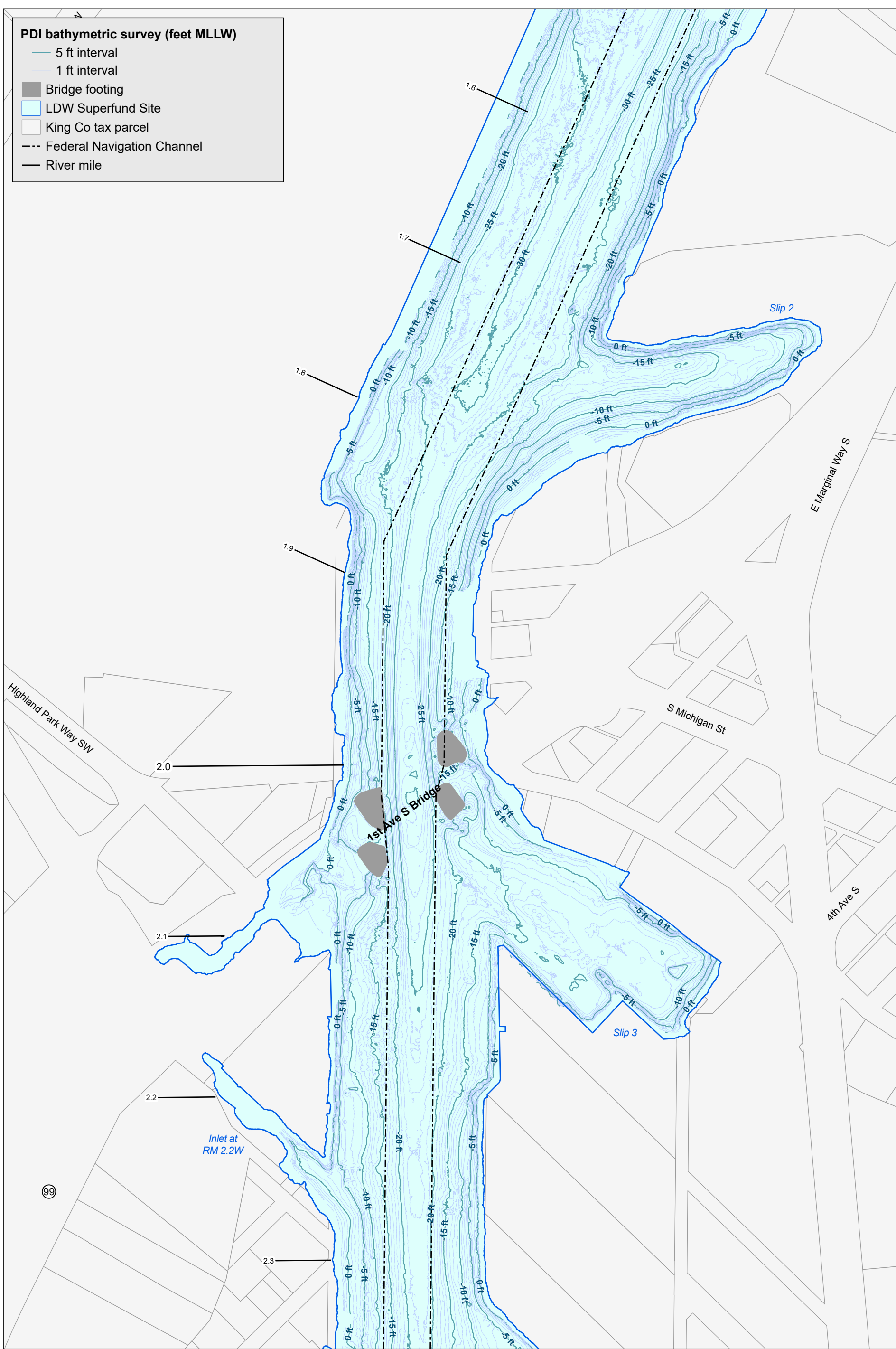


PDI bathymetric survey (feet MLLW)

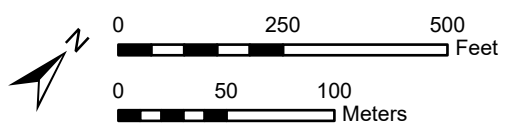
- 5 ft interval
- 1 ft interval
- Bridge footing
- LDW Superfund Site
- King Co tax parcel
- Federal Navigation Channel
- River mile



Prepared by craigh, 2/2/2024, W:\Projects\Duwamish_AOC\GIS\Maps and Analyses\Supplemental\aprx\7421_2023 Bathymetric conditions



Lower Duwamish Waterway Group
 City of Seattle / King County / The Boeing Company

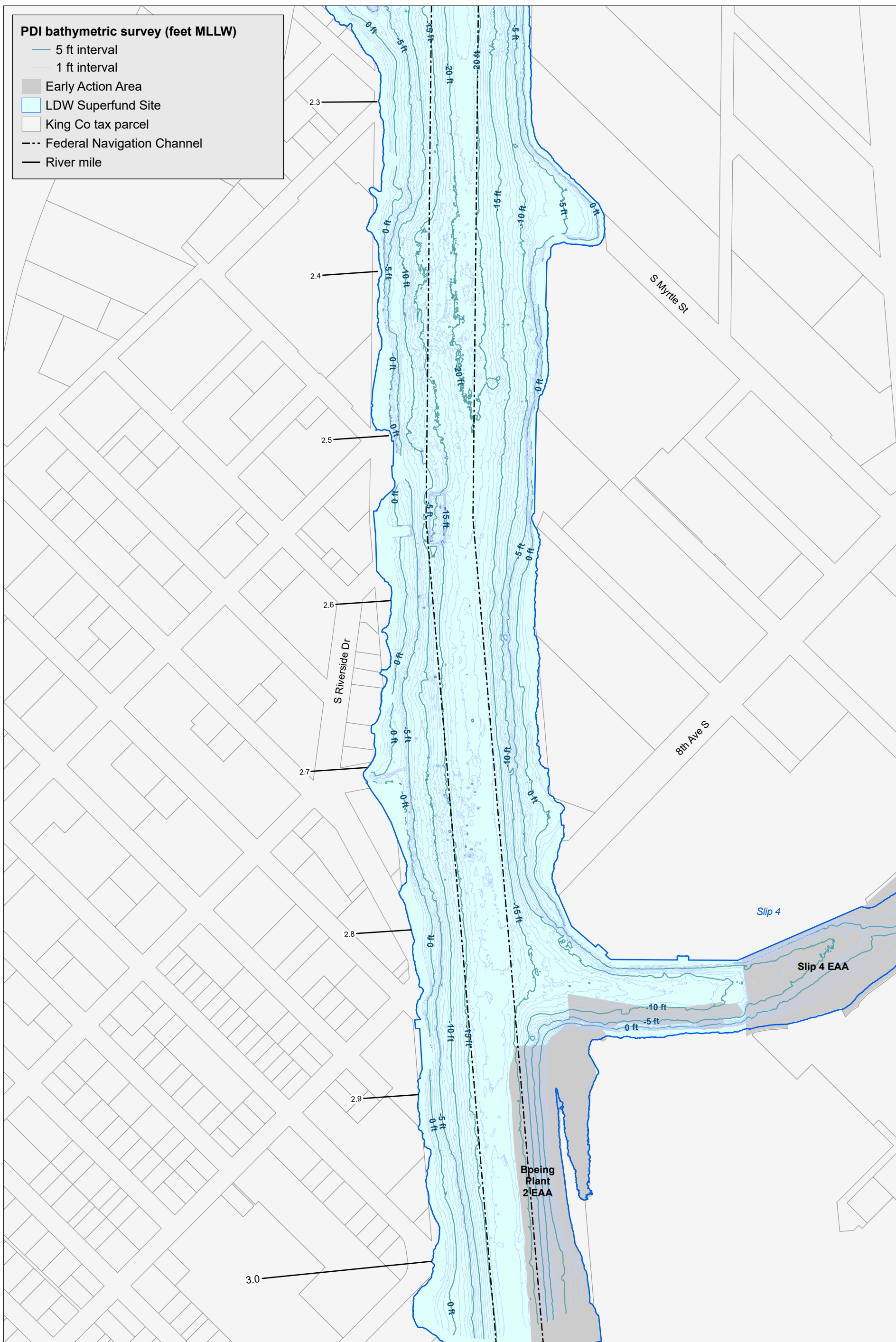


2023 PDI Bathymetric Survey, RM 1.6 to RM 2.3

DRAFT
 FEBRUARY 02, 2024

PDI bathymetric survey (feet MLLW)

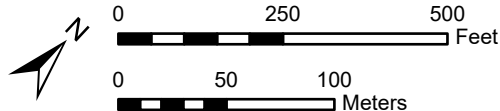
- 5 ft interval
- 1 ft interval
- Early Action Area
- LDW Superfund Site
- King Co tax parcel
- Federal Navigation Channel
- River mile



Prepared by craigh, 2/2/2024, W:\Projects\Duwamish_AOC\GIS\Maps and Analyses\Supplemental\aprx\7421_2023 Bathymetric conditions



Lower Duwamish Waterway Group
 City of Seattle / King County / The Boeing Company



2023 PDI Bathymetric Survey, RM 2.3 to RM 3.0
DRAFT
 FEBRUARY 02, 2024