

PCB tissue sample

- Crab
- Fish

Prepared by ClaireC, 8/10/2023; W:\Projects\Duwamish\ACDC\GIS\Maps and Analysis\Phase 1\Background Tissue Compilation\Map 1a 7470 Background Tissue - post RIFS PCB.mxd

ANCHOR QEA **Windward environmental LLC**

Lower Duwamish Waterway Group
 Port of Seattle / City of Seattle / King County / The Boeing Company

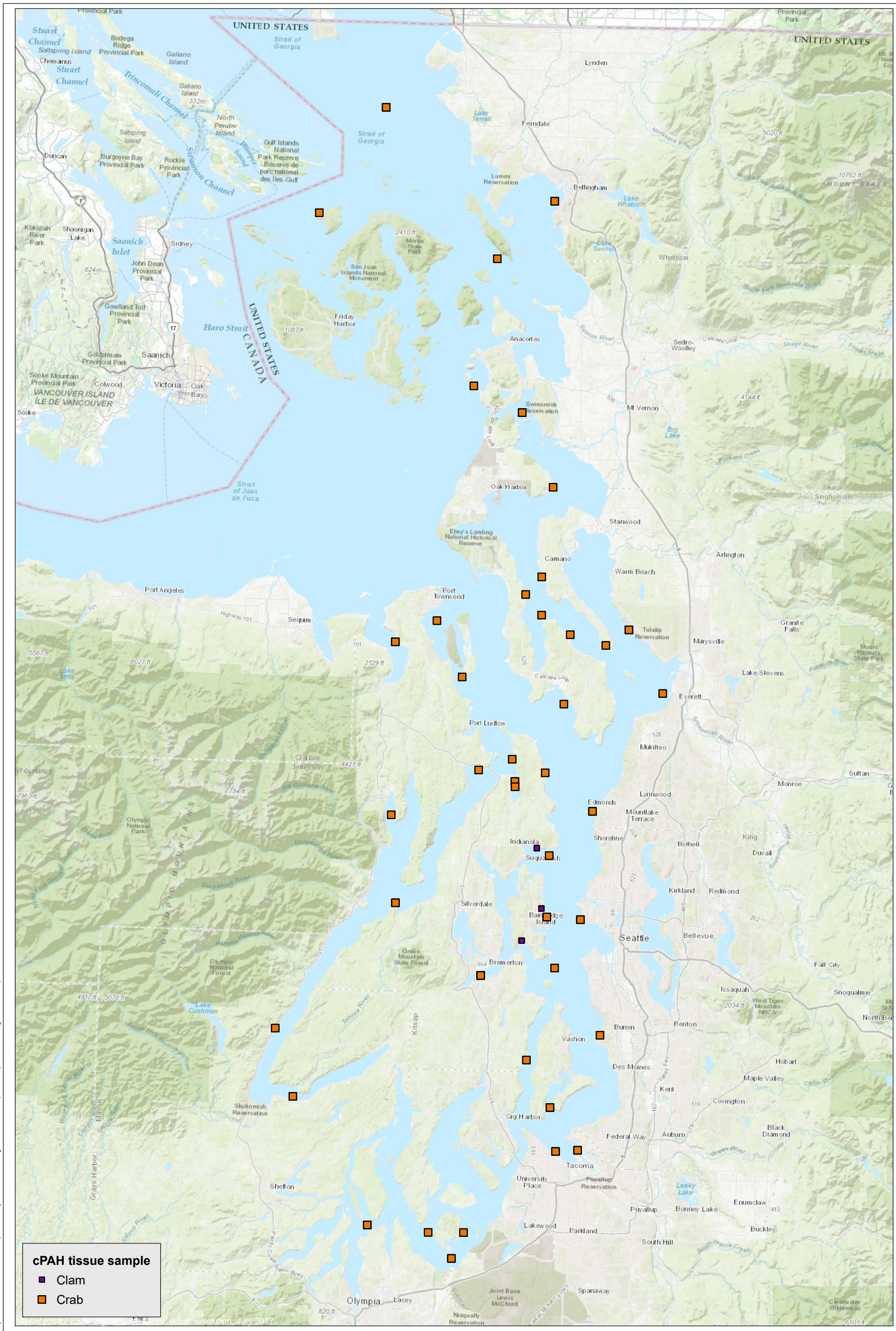
N

0 5 10 Miles

0 10 20 Kilometers

Map 1a. Post-2008 dataset Puget Sound sampling locations sampled for fish and crab tissue and analyzed for PCBs

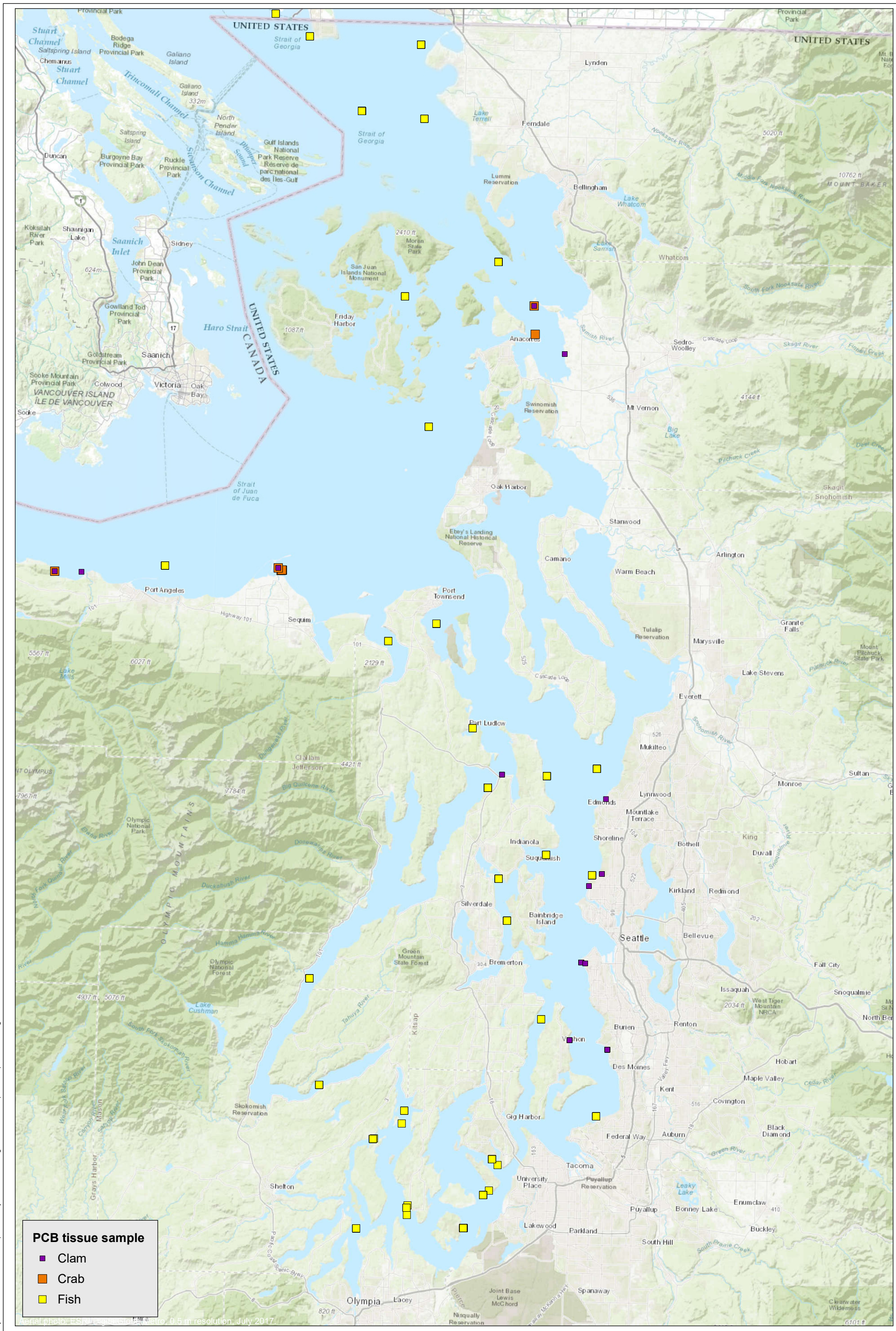
LDW MIDDLE REACH: COMPILATION AND ASSESSMENT OF FISH AND SHELLFISH TISSUE FROM NON-URBAN AREAS OF PUGET SOUND **AUGUST 10, 2023**



cPAH tissue sample

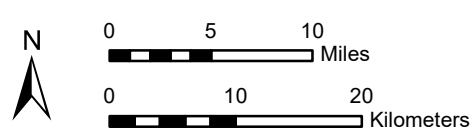
- Clam
- Crab

Prepared by ClaireC, 8/10/2023; W:\Projects\Duwamish\ACCS\GIS\Maps and Analysis\Phase 1\Background Tissue Compilation\Map 1b 7470 Background tissue - post RIFS cPAH.mxd



PCB tissue sample

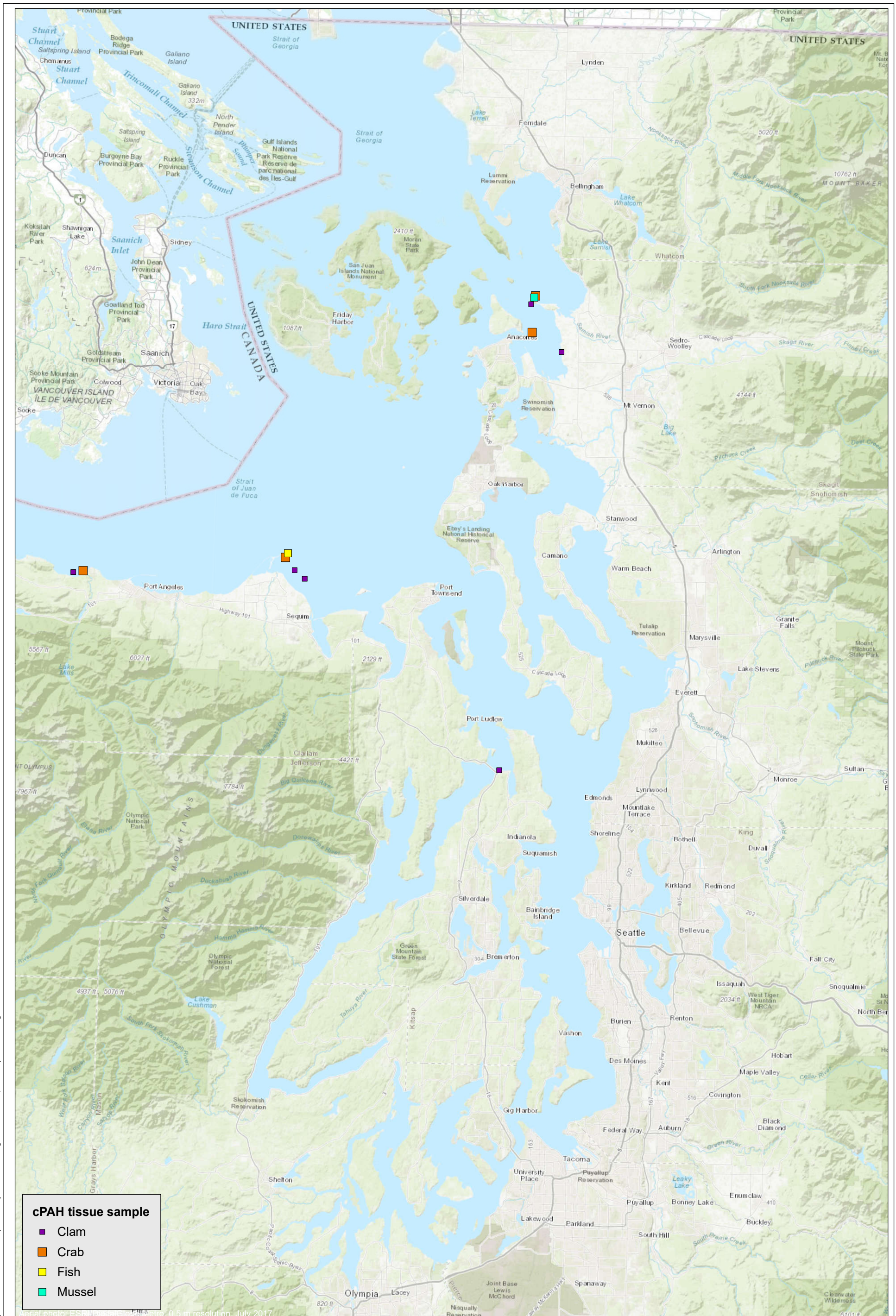
- Clam
- Crab
- Fish



Map 2a. Non-urban Puget Sound sampling locations presented in the LDW feasibility study for fish, crab, and clam tissue analyzed for PCBs

LDW MIDDLE REACH: COMPILATION AND ASSESSMENT OF FISH AND SHELLFISH TISSUE FROM NON-URBAN AREAS OF PUGET SOUND **AUGUST 10, 2023**

Prepared by ClaireC, 8/10/2023; W:\Projects\Duwamish\AOCs\GIS\Maps and Analysis\Phase 1\Background Tissue Compilation\Map 2a 7470 Background tissue - RIFS PCB.mxd



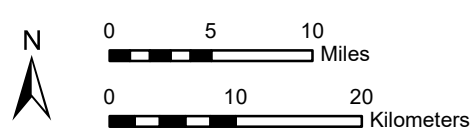
cPAH tissue sample

- Clam
- Crab
- Fish
- Mussel

Prepared by ClaireC, 8/10/2023; W:\Projects\Duwamish\ACOS\GIS\Maps and Analysis\Phase 1\Background Tissue Compilation\Map 2b 7470 Background tissue - RIFS cPAH.mxd

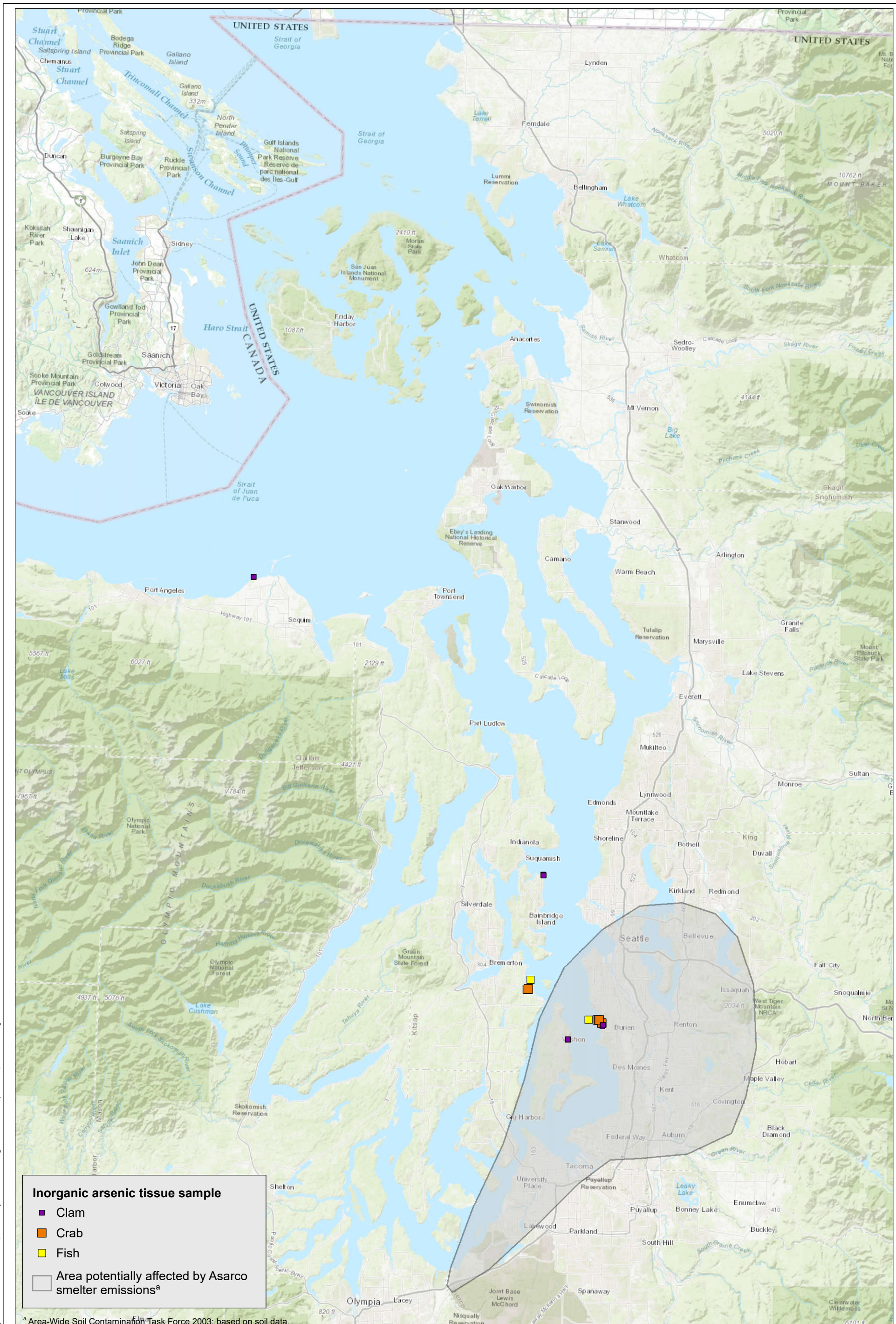
ANCHOR QEA **Windward** environmental LLC

Lower Duwamish Waterway Group
 Port of Seattle / City of Seattle / King County / The Boeing Company



Map 2b. Non-urban Puget Sound sampling locations presented in the LDW feasibility study for fish, crab, clam, and mussel tissue analyzed for cPAHs

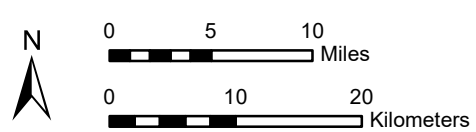
LDW MIDDLE REACH: COMPILATION AND ASSESSMENT OF FISH AND SHELLFISH TISSUE FROM NON-URBAN AREAS OF PUGET SOUND **AUGUST 10, 2023**



Inorganic arsenic tissue sample

- Clam
- Crab
- Fish
- Area potentially affected by Asarco smelter emissions^a

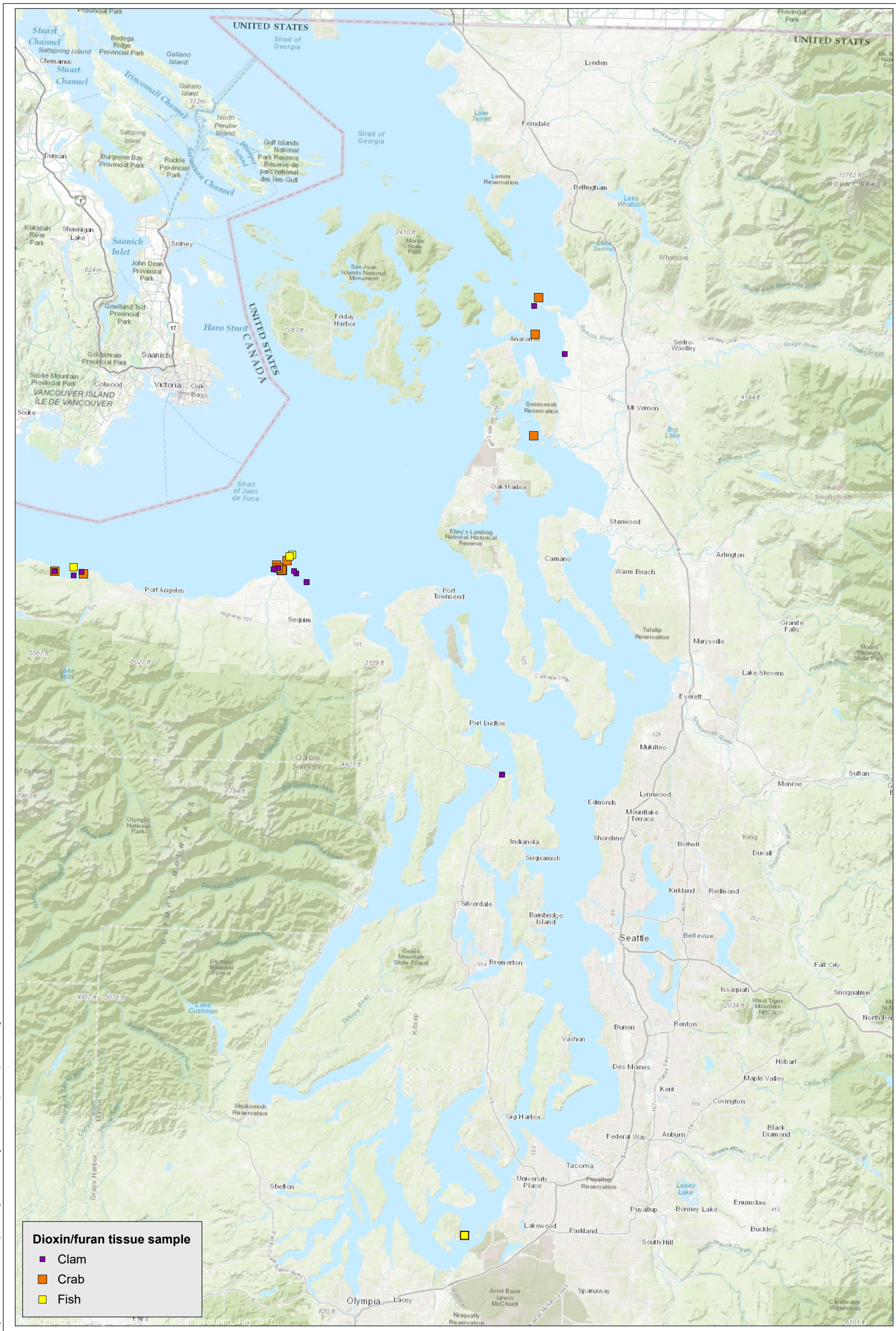
^a Area-Wide Soil Contamination Task Force 2003; based on soil data.



Map 2c. Non-urban Puget Sound sampling locations presented in the LDW feasibility study for fish, crab, and clam tissue analyzed for inorganic arsenic

LDW MIDDLE REACH: COMPILATION AND ASSESSMENT OF FISH AND SHELLFISH TISSUE FROM NON-URBAN AREAS OF PUGET SOUND **AUGUST 10, 2023**

Prepared by ClaireC, 8/10/2023; W:\Projects\Duwamish\AOC5\GIS\Maps and Analysis\Phase 1\Background Tissue Compilation\Map 2c 7470 Background tissue - RIFS arsenic.mxd



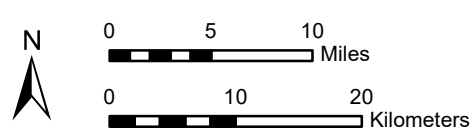
Dioxin/furan tissue sample

- Clam
- Crab
- Fish

Prepared by ClaireC, 8/10/2023; W:\Projects\Duwamish\AOCs\GIS\Maps and Analysis\Phase 1\Background Tissue Compilation\Map 2d 7470 Background tissue - RIFS.dioxin.furan.mxd

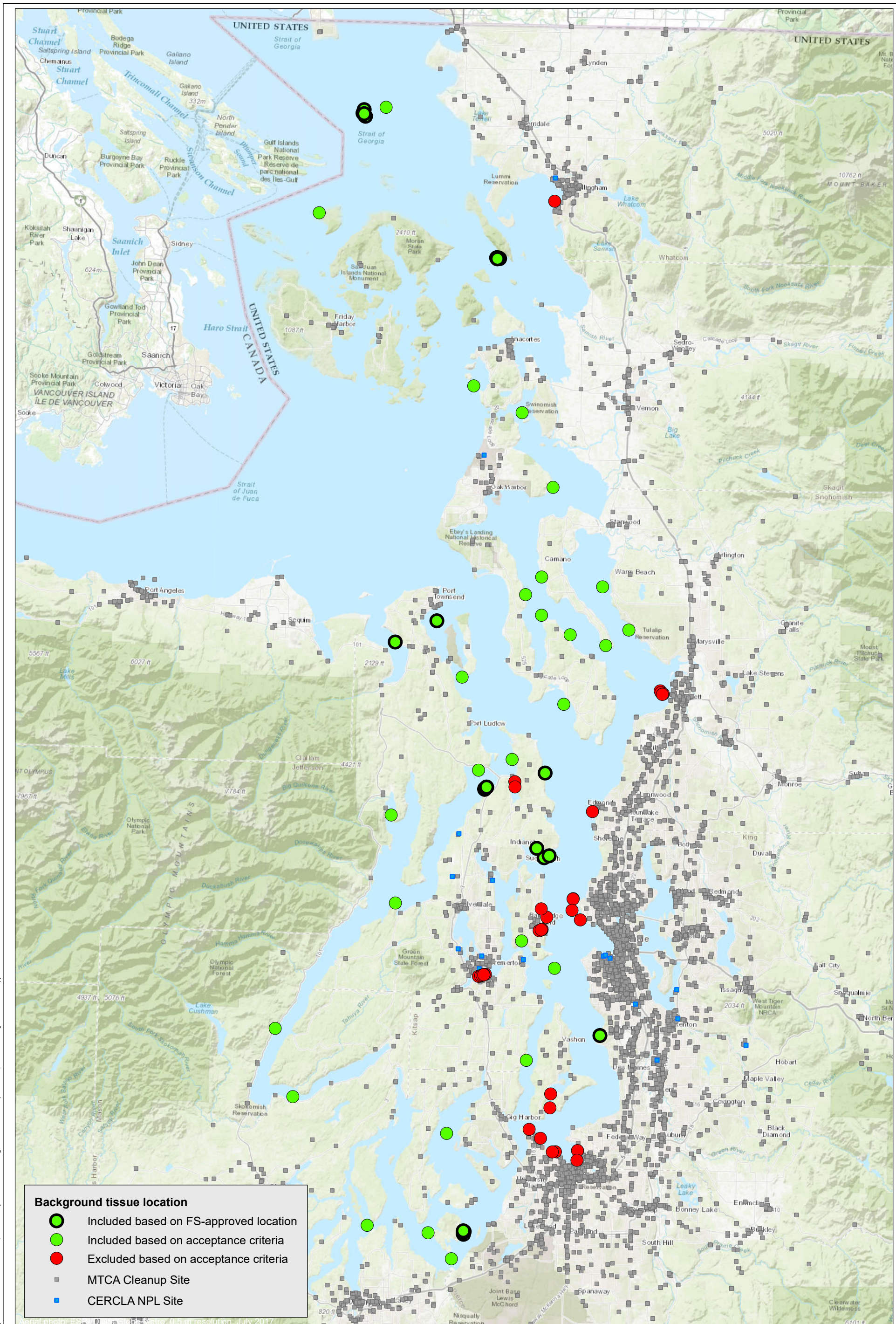
ANCHOR QEA **Windward environmental LLC**

Lower Duwamish Waterway Group
 Port of Seattle / City of Seattle / King County / The Boeing Company



Map 2d. Non-urban Puget Sound sampling locations presented in the LDW feasibility study for fish, crab, and clam tissue analyzed for dioxins/furans

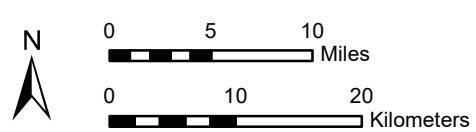
LDW MIDDLE REACH: COMPILATION AND ASSESSMENT OF FISH AND SHELLFISH TISSUE FROM NON-URBAN AREAS OF PUGET SOUND **AUGUST 10, 2023**



Background tissue location

- Included based on FS-approved location
- Included based on acceptance criteria
- Excluded based on acceptance criteria
- MTCA Cleanup Site
- CERCLA NPL Site

Prepared by ClaireC, 8/10/2023; W:\Projects\Duwamish\AOCs\GIS\Maps and Analysis\Phase 1\Background Tissue Compilation\Map 3 7470 Background tissue - approval status.mxd



Map 3. Post-2008 non-urban Puget Sound sampling locations for all tissue types and four COCs relative to MTCA and CERCLA Sites

LDW MIDDLE REACH: COMPILATION AND ASSESSMENT OF FISH AND SHELLFISH TISSUE FROM NON-URBAN AREAS OF PUGET SOUND **AUGUST 10, 2023**