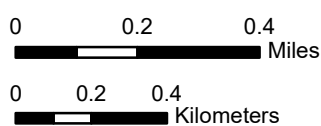


Prepared by ClaireC. 4/13/2023. W:\Projects\Duwamish AOC\GIS\Maps and Analysis\Periodic Monitoring\QAPP\Map 2-1 6520 Crab-sole sampling plan.mxd

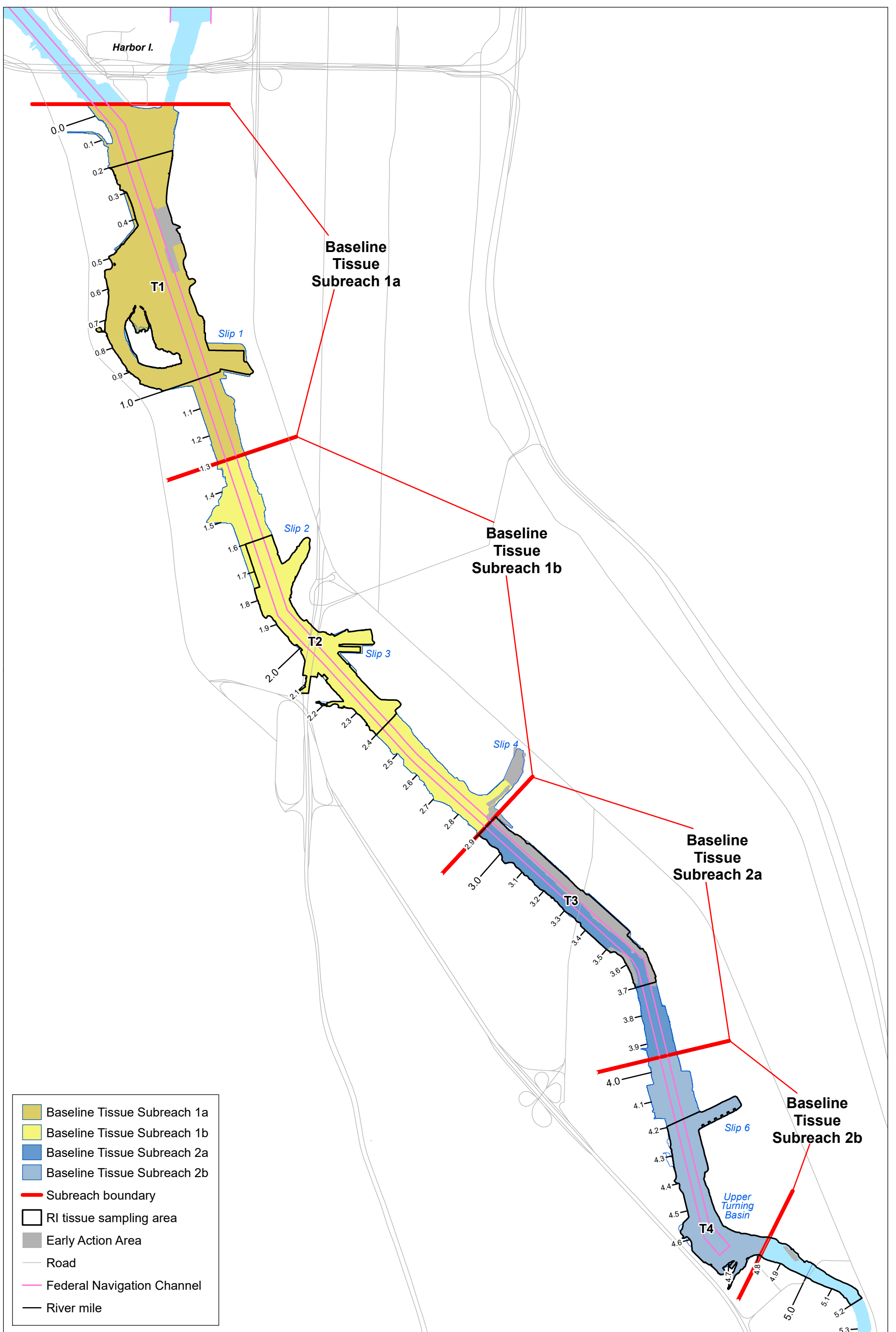


Lower Duwamish Waterway Group
 Port of Seattle / City of Seattle / King County / The Boeing Company

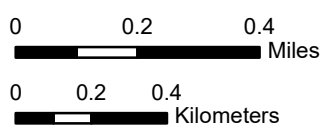
Map 2-1. Sampling reaches for baseline English sole and crab tissue collection

FISH, CRAB, CLAM AND SURFACE WATER PERIODIC MONITORING QAPP FOR THE LDW

APRIL 12, 2023



Prepared by ClaireC. 4/13/2023. W:\Projects\Duwamish AOC\GIS\Maps and Analysis\Periodic Monitoring\QAPP\Map 2-2 6520 Shiner surfperch sampling plan.mxd

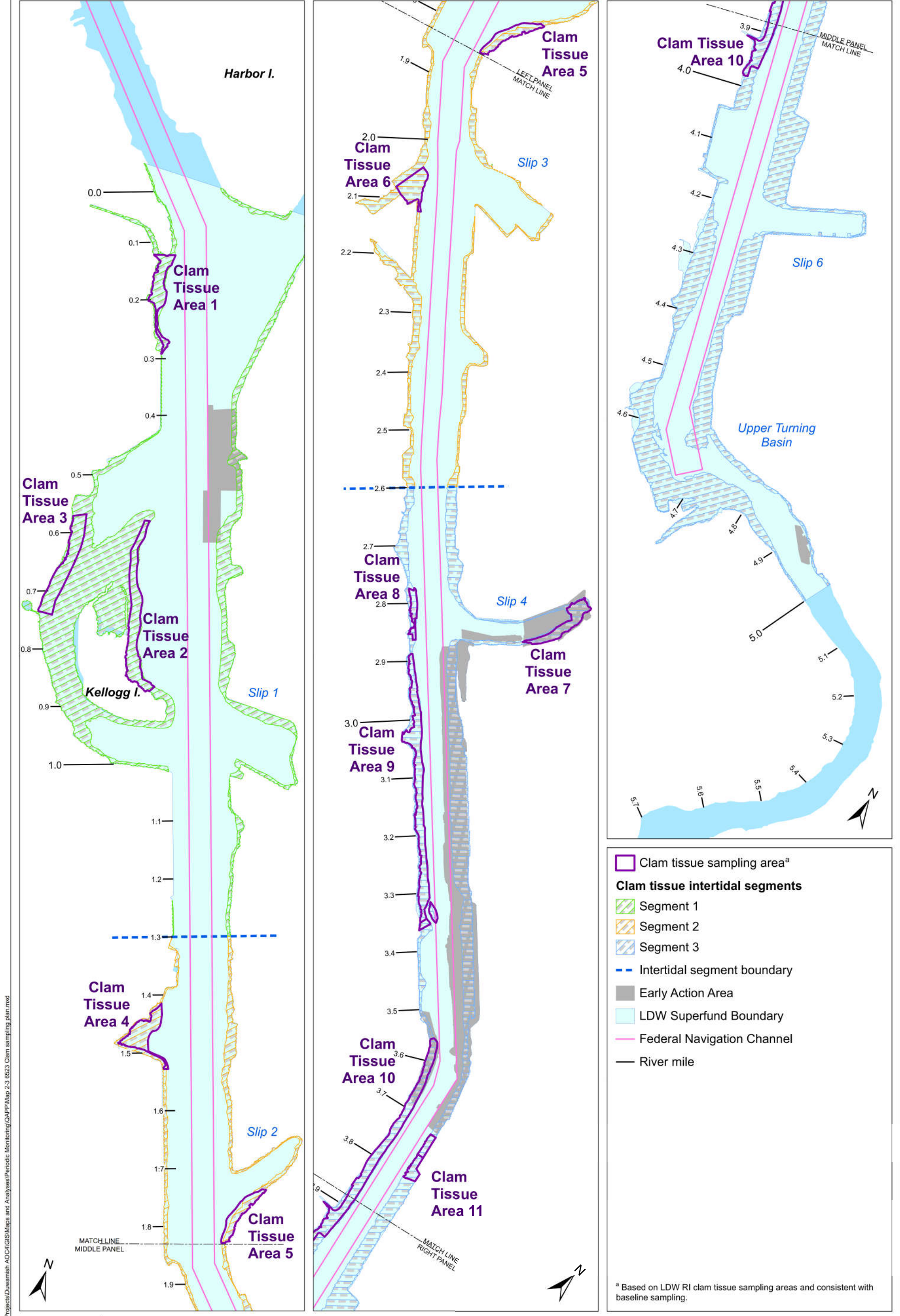


Lower Duwamish Waterway Group
 Port of Seattle / City of Seattle / King County / The Boeing Company

Map 2-2. Sampling reaches for shiner surfperch tissue collection

FISH, CRAB, CLAM AND SURFACE WATER PERIODIC MONITORING QAPP FOR THE LDW

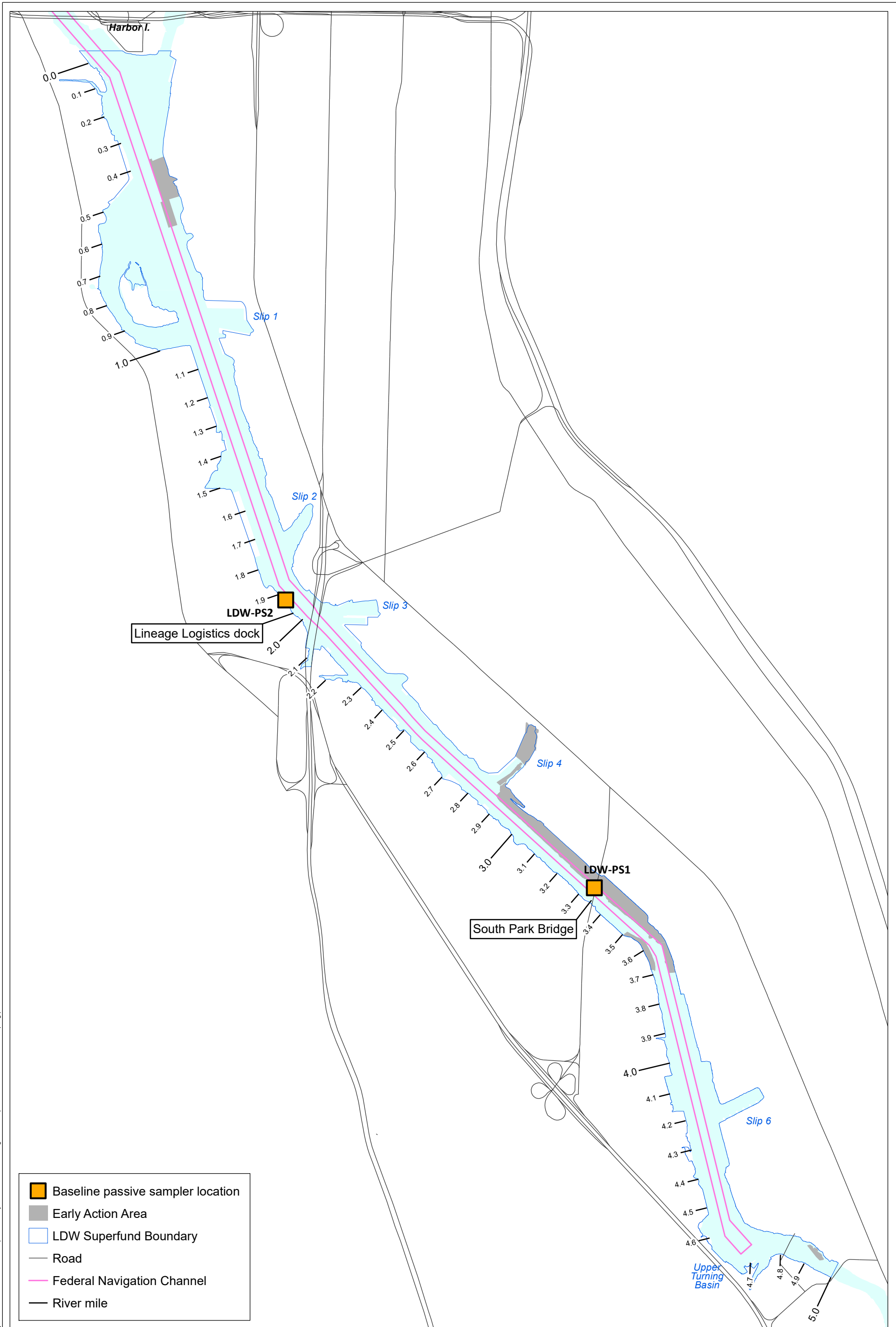
APRIL 12, 2023









- Clam tissue sampling area^a
- Clam tissue intertidal segments**
- Segment 1
- Segment 2
- Segment 3
- Intertidal segment boundary
- Early Action Area
- LDW Superfund Boundary
- Federal Navigation Channel
- River mile

^a Based on LDW RI clam tissue sampling areas and consistent with baseline sampling.

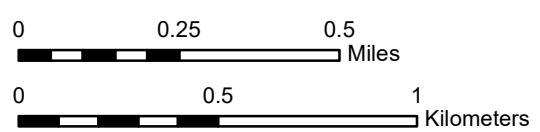
Prepared by ClaireC_4/13/2023: W:\Projects\Duwamish ACC\GIS\Maps and Analyses\Periodic Monitoring\QAPP\Map 2-3 6523 Clam sampling plan.mxd



-  Baseline passive sampler location
-  Early Action Area
-  LDW Superfund Boundary
-  Road
-  Federal Navigation Channel
-  River mile



Lower Duwamish Waterway Group
 Port of Seattle / City of Seattle / King County / The Boeing Company



Map 2-4. Passive sampler locations

FISH, CRAB, CLAM AND SURFACE WATER
 PERIODIC MONITORING QAPP FOR THE LDW

APRIL 12, 2023