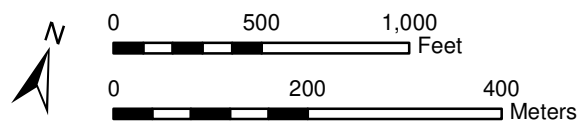
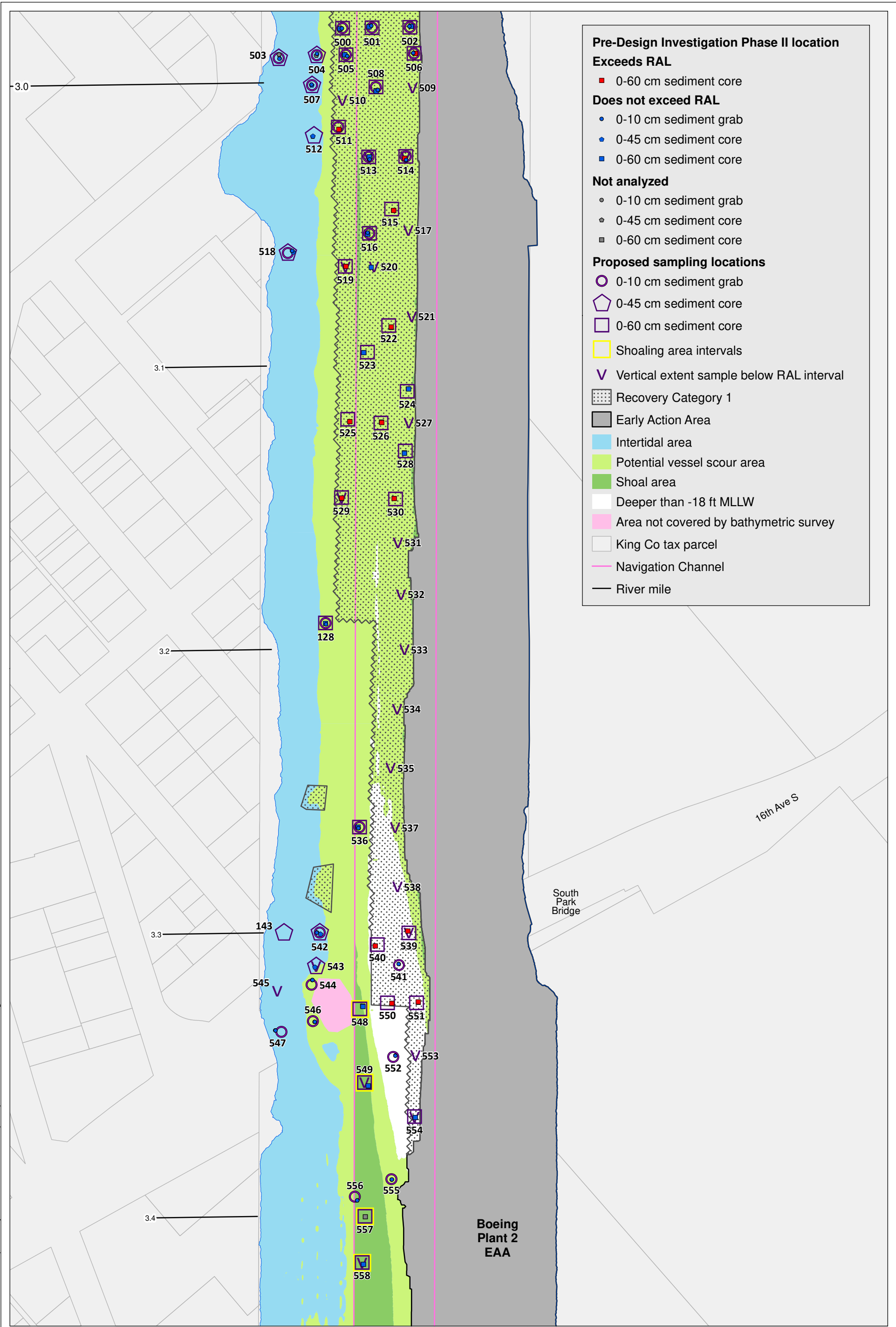


- Pre-Design Investigation Phase II location^a**
- Exceeds RAL**
- 0-10 cm sediment grab
 - ◇ 0-45 cm sediment core
 - 0-60 cm sediment core
- Does not exceed RAL**
- 0-10 cm sediment grab
 - ◇ 0-45 cm sediment core
 - 0-60 cm sediment core
- Not analyzed**
- 0-10 cm sediment grab
 - ◇ 0-45 cm sediment core
 - 0-60 cm sediment core
 - Shoaling area intervals
 - Pre-Design Investigation Phase I location analyzed in Phase II
 - Early Action Area
 - AC Pilot plots
 - Intertidal area
 - Potential vessel scour area
 - Shoal area
 - Deeper than -18 ft MLLW
 - Subtidal with no subsurface RAL
 - Area not covered by bathymetric survey
 - King Co tax parcel
 - Navigation Channel
 - River mile

^a Samples from locations 677, 678, 681, 683, and 684 were analyzed for cPAHs; the data will be presented in a technical memorandum once the data are validated.



Prepared by craigh. 1/4/22. W:\Projects\Duwamish_AOC\GIS\Maps and Analyses\Phase II\Field Work\Data Report\Map 1 7294 Phase II PDI locations.mxd

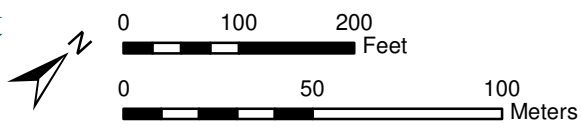


- Pre-Design Investigation Phase II location**
- Exceeds RAL**
- 0-60 cm sediment core
- Does not exceed RAL**
- 0-10 cm sediment grab
 - 0-45 cm sediment core
 - 0-60 cm sediment core
- Not analyzed**
- 0-10 cm sediment grab
 - 0-45 cm sediment core
 - 0-60 cm sediment core
- Proposed sampling locations**
- 0-10 cm sediment grab
 - 0-45 cm sediment core
 - 0-60 cm sediment core
- Shoaling area intervals
 - Vertical extent sample below RAL interval
 - Recovery Category 1
 - Early Action Area
 - Intertidal area
 - Potential vessel scour area
 - Shoal area
 - Deeper than -18 ft MLLW
 - Area not covered by bathymetric survey
 - King Co tax parcel
 - Navigation Channel
 - River mile

Prepared by craigh. 1/4/22. W:\Projects\Duwamish_AOC\GIS\Maps and Analyses\Phase II\Field Work\Data Report\Map 2a 7234 Phase II PDI locations targets v actuals.mxd

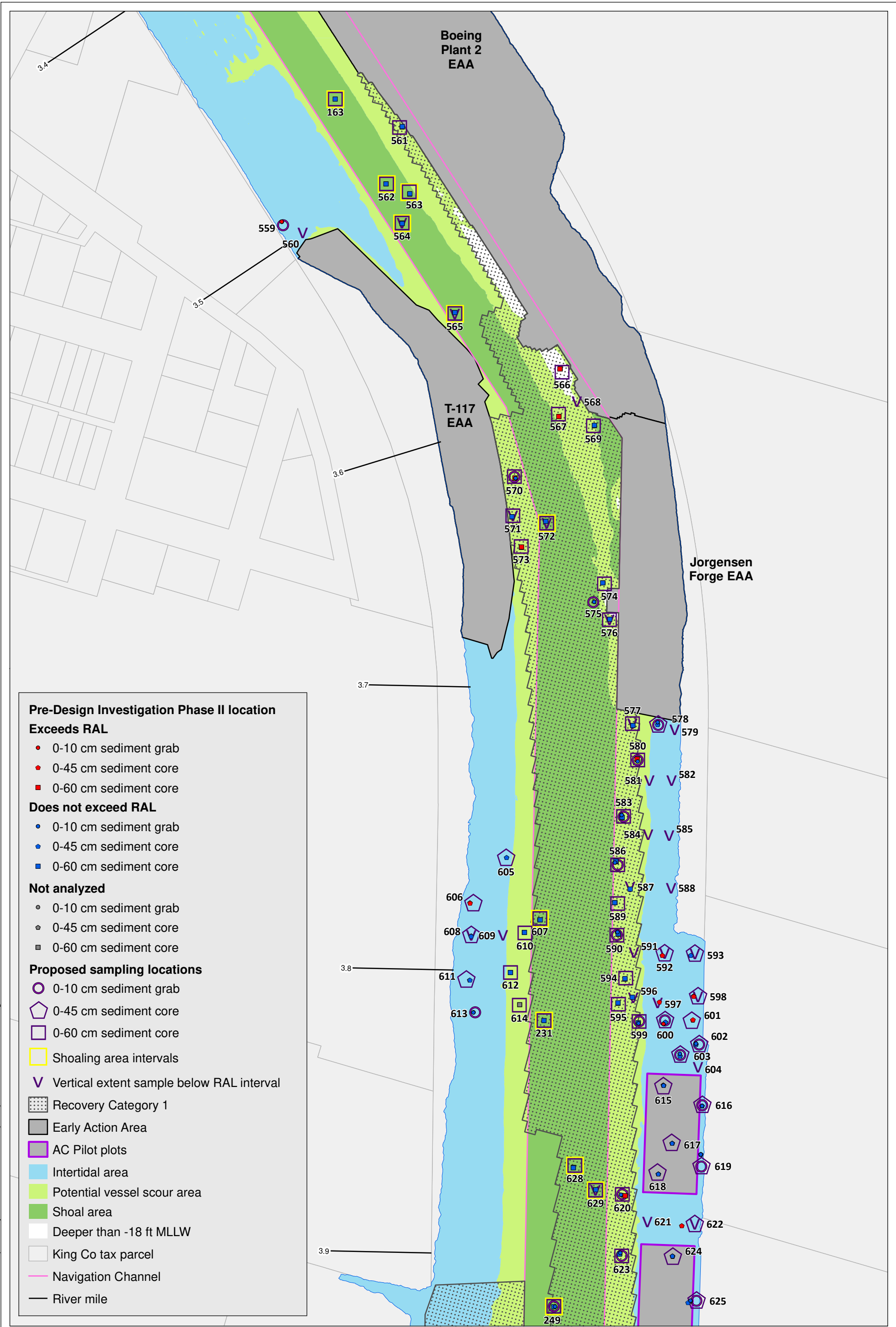


Lower Duwamish Waterway Group
 Port of Seattle / City of Seattle / King County / The Boeing Company



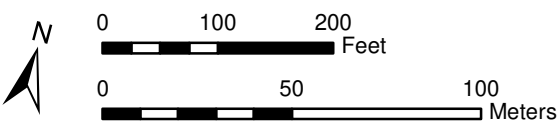
Map 2a. Phase II PDI sediment sampling location targets versus actuals, RM 3.0 to RM 3.4

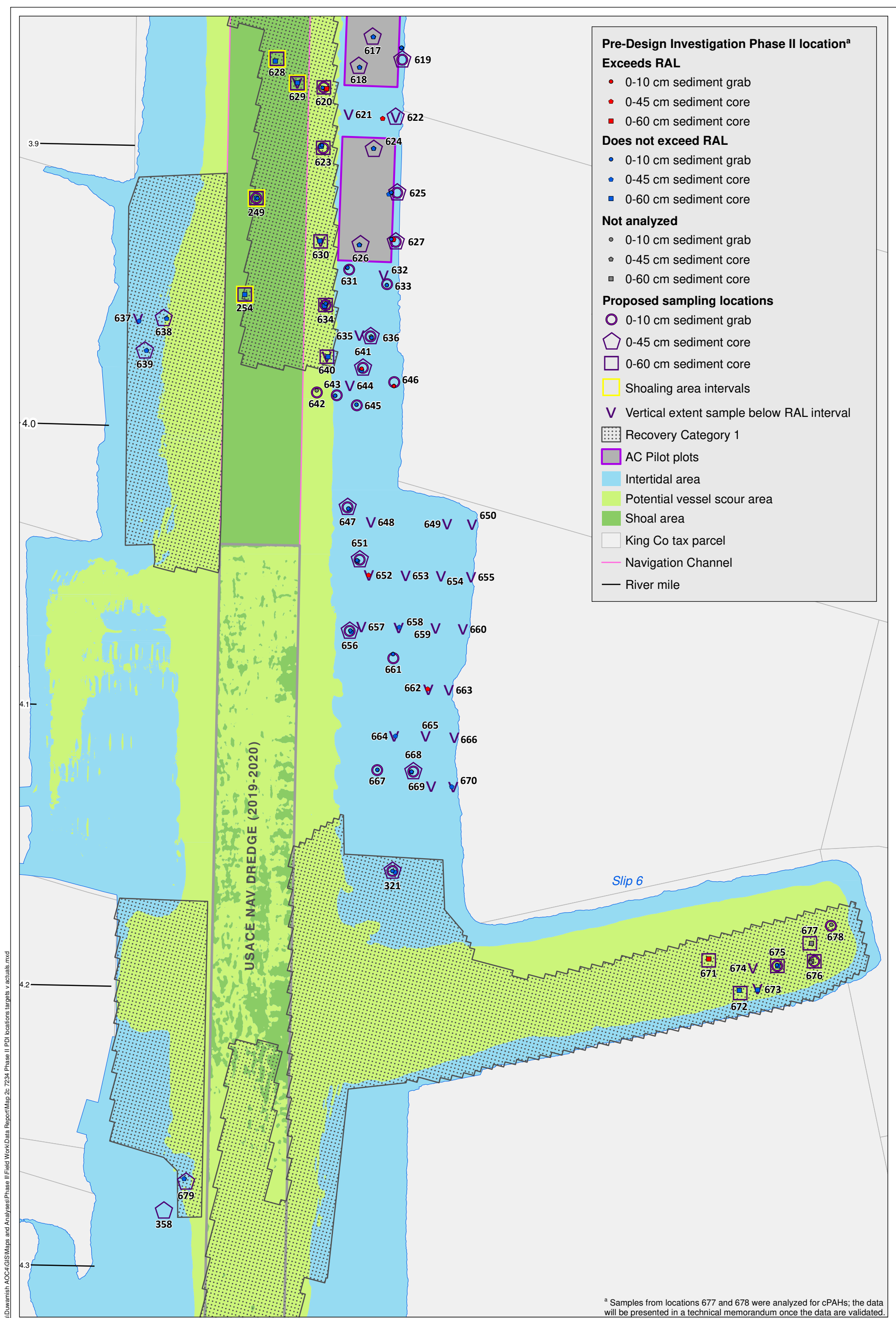
PRE-DESIGN INVESTIGATION PHASE II DATA PACKAGE FOR THE LDW UPPER REACH **DRAFT**



- Pre-Design Investigation Phase II location Exceeds RAL**
- 0-10 cm sediment grab
 - 0-45 cm sediment core
 - 0-60 cm sediment core
- Does not exceed RAL**
- 0-10 cm sediment grab
 - 0-45 cm sediment core
 - 0-60 cm sediment core
- Not analyzed**
- 0-10 cm sediment grab
 - 0-45 cm sediment core
 - 0-60 cm sediment core
- Proposed sampling locations**
- 0-10 cm sediment grab
 - ⬠ 0-45 cm sediment core
 - ⬠ 0-60 cm sediment core
 - Shoaling area intervals
 - ∇ Vertical extent sample below RAL interval
 - ▨ Recovery Category 1
 - Early Action Area
 - AC Pilot plots
 - Intertidal area
 - Potential vessel scour area
 - Shoal area
 - Deeper than -18 ft MLLW
 - King Co tax parcel
 - Navigation Channel
 - River mile

Prepared by craigh. 1/4/22. W:\Projects\Duwamish_AOC\GIS\Maps and Analyses\Phase II\Field Work\Data Report\Map 2b 7264-Phase II PDI locations targets v actuals.mxd





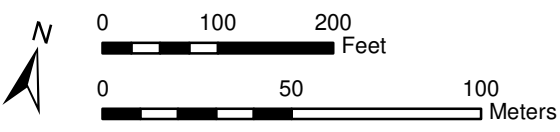
- Pre-Design Investigation Phase II location^a**
- Exceeds RAL**
- 0-10 cm sediment grab
 - 0-45 cm sediment core
 - 0-60 cm sediment core
- Does not exceed RAL**
- 0-10 cm sediment grab
 - 0-45 cm sediment core
 - 0-60 cm sediment core
- Not analyzed**
- 0-10 cm sediment grab
 - 0-45 cm sediment core
 - 0-60 cm sediment core
- Proposed sampling locations**
- 0-10 cm sediment grab
 - 0-45 cm sediment core
 - 0-60 cm sediment core
 - Shoaling area intervals
 - Vertical extent sample below RAL interval
 - Recovery Category 1
 - AC Pilot plots
 - Intertidal area
 - Potential vessel scour area
 - Shoal area
 - King Co tax parcel
 - Navigation Channel
 - River mile

^a Samples from locations 677 and 678 were analyzed for cPAHs; the data will be presented in a technical memorandum once the data are validated.

Prepared by craigh.1/4/22. W:\Projects\Duwamish AOC\GIS\Maps and Analyses\Phase II\Field Work\Data Report\Map 2c: 7234-Phase II PDI locations targets v actuals.mxd

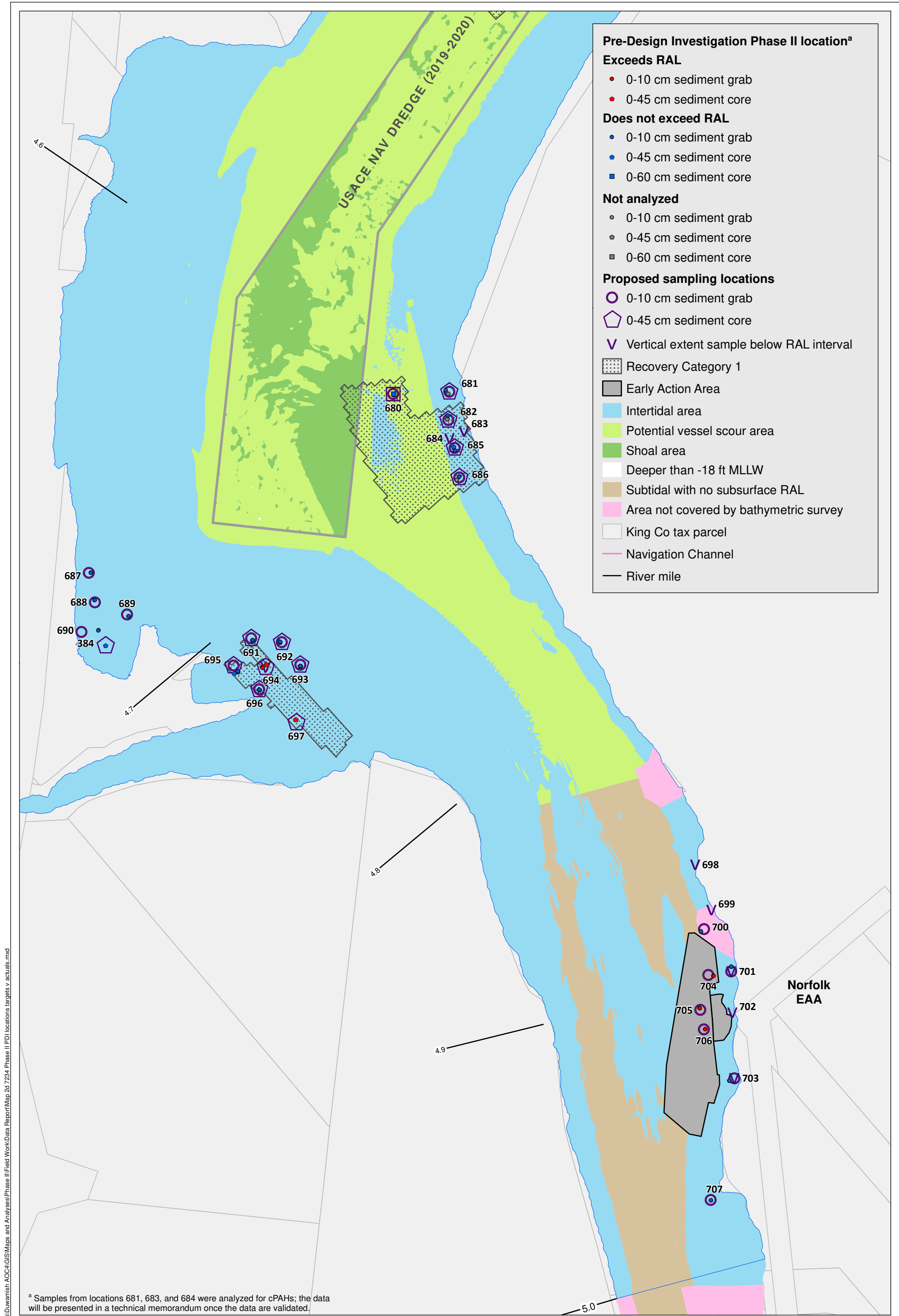


Lower Duwamish Waterway Group
 Port of Seattle / City of Seattle / King County / The Boeing Company



Map 2c. Phase II PDI sediment sampling location targets versus actuals, RM 3.9 to RM 4.3

PRE-DESIGN INVESTIGATION PHASE II DATA PACKAGE FOR THE LDW UPPER REACH **DRAFT**



- Pre-Design Investigation Phase II location^a**
- Exceeds RAL**
- 0-10 cm sediment grab
 - 0-45 cm sediment core
- Does not exceed RAL**
- 0-10 cm sediment grab
 - 0-45 cm sediment core
 - 0-60 cm sediment core
- Not analyzed**
- 0-10 cm sediment grab
 - 0-45 cm sediment core
 - 0-60 cm sediment core
- Proposed sampling locations**
- 0-10 cm sediment grab
 - 0-45 cm sediment core
 - ∇ Vertical extent sample below RAL interval
- Recovery Category 1
- Early Action Area
- Intertidal area
- Potential vessel scour area
- Shoal area
- Deeper than -18 ft MLLW
- Subtidal with no subsurface RAL
- Area not covered by bathymetric survey
- King Co tax parcel
- Navigation Channel
- River mile

^a Samples from locations 681, 683, and 684 were analyzed for cPAHs; the data will be presented in a technical memorandum once the data are validated.

Prepared by craigh. 1/4/22. W:\Projects\Duwamish_AOC\GIS\Maps and Analyses\Phase II\Field Work\Data Report\Map 2d 7234 Phase II PDI locations targets v actuals.mxd

