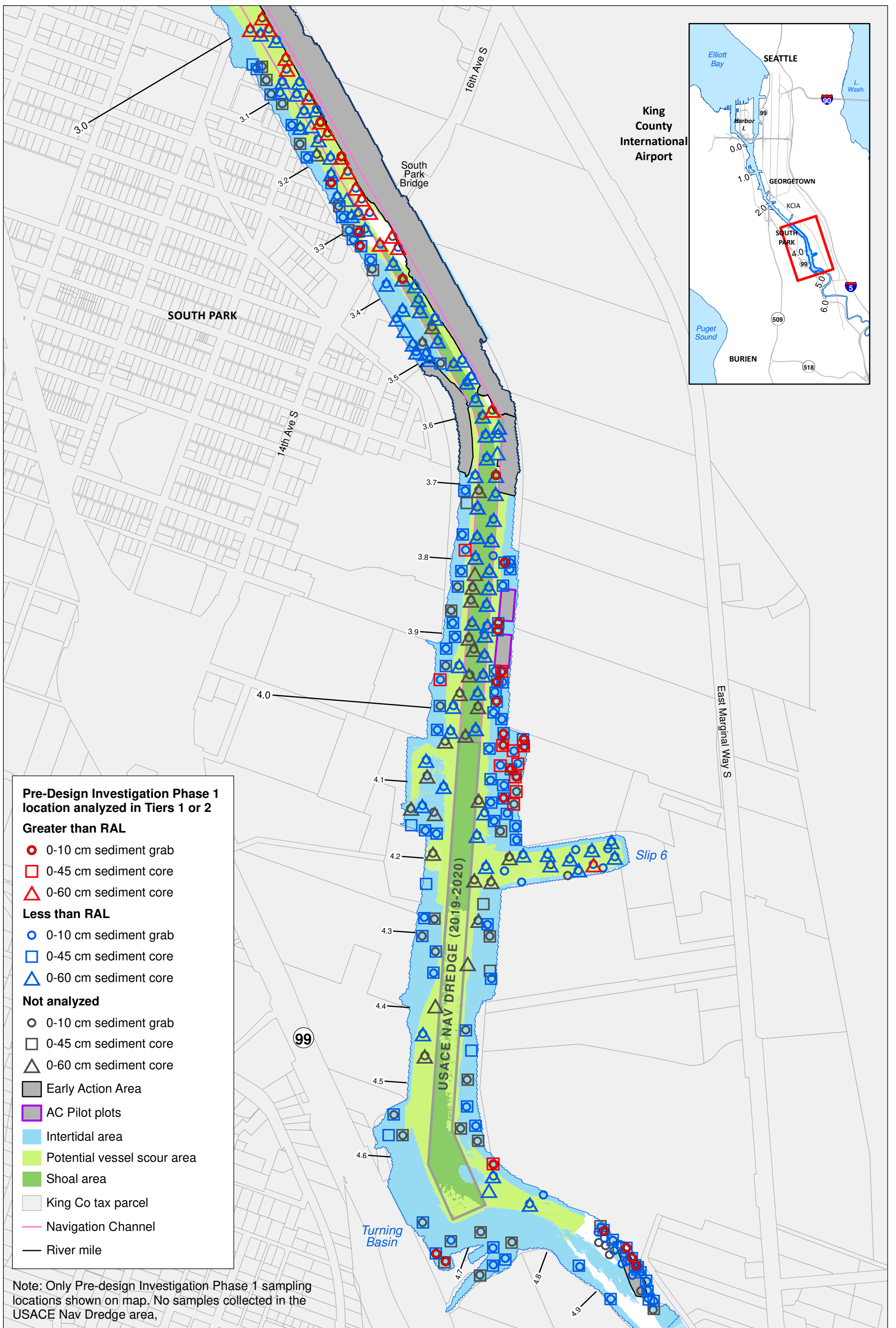


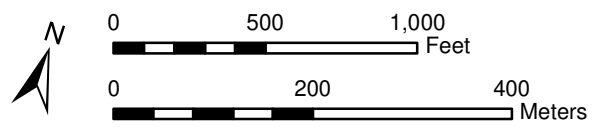
**PHASE I PRE-DESIGN INVESTIGATION VALIDATED TIER 1 AND TIER 2 DATA – WORK IN PROGRESS**



Prepared by craigh\_12/3/20: W:\Projects\Duwamish AOC\GIS\Maps and Analyses\Field Data Package\7234\_Tier 1\_2\_locations.mxd



**Lower Duwamish Waterway Group**  
 Port of Seattle / City of Seattle / King County / The Boeing Company

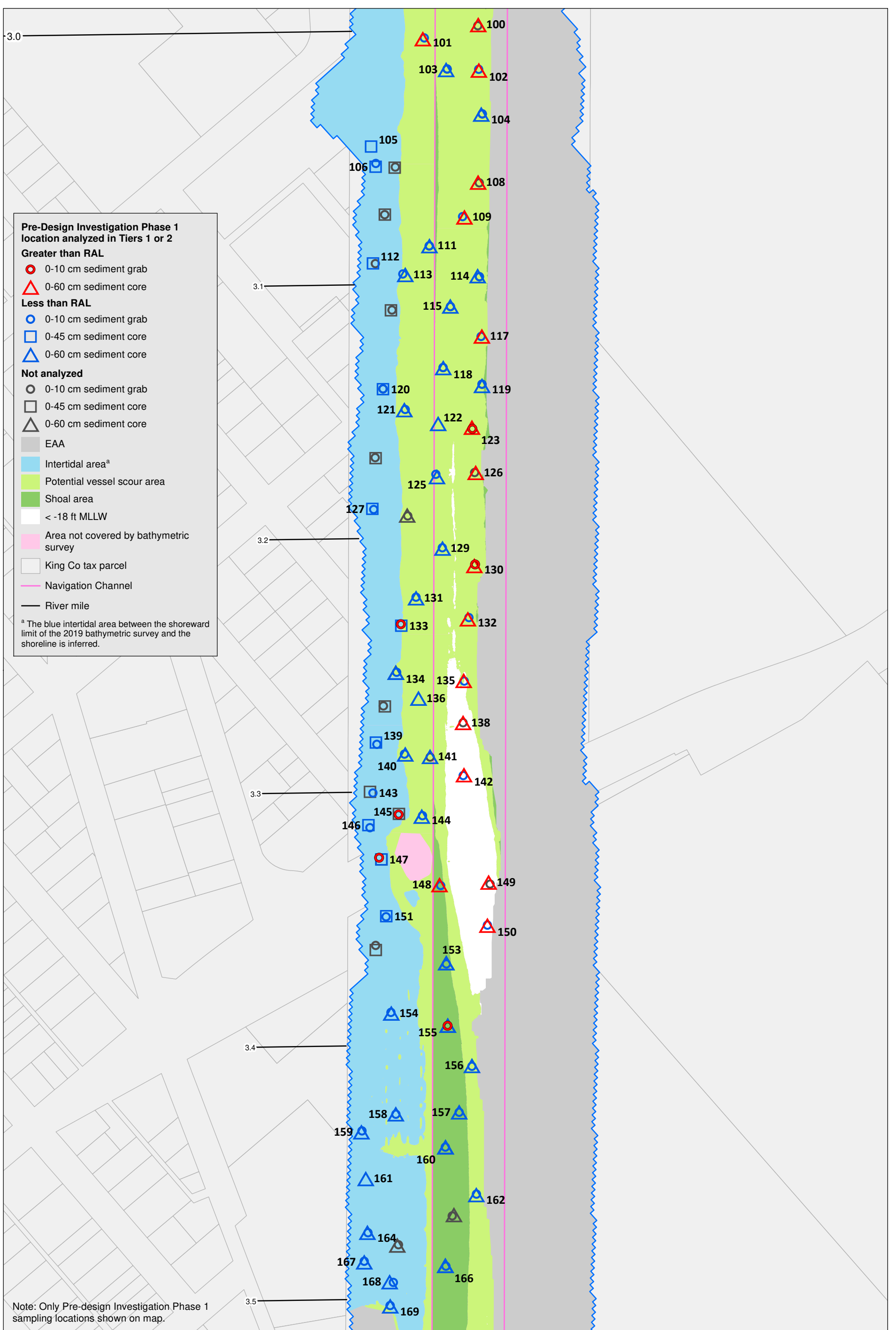


**Map 1. Tier 1 and Tier 2 results in Pre-Design Investigation samples December 4, 2020**

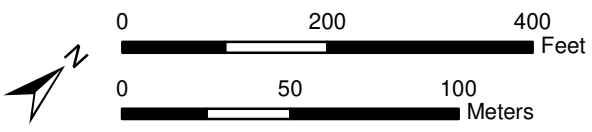
**DRAFT**

LDW UPPER REACH PRE-DESIGN INVESTIGATION PHASE 1 DATA PACKAGE

**PHASE I PRE-DESIGN INVESTIGATION VALIDATED TIER 1 AND TIER 2 DATA – WORK IN PROGRESS**



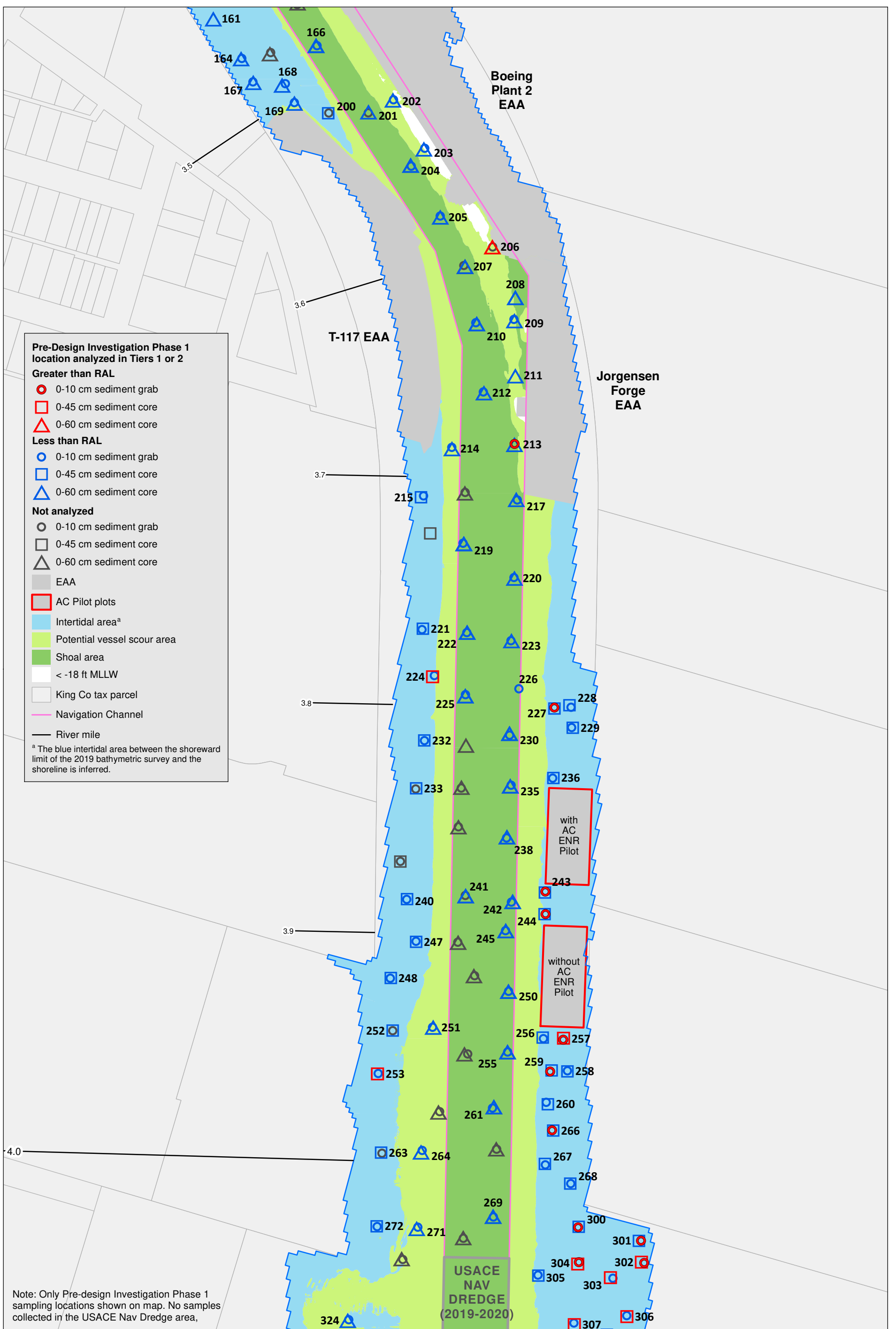
**Lower Duwamish Waterway Group**  
 Port of Seattle / City of Seattle / King County / The Boeing Company



**Map 2a. Tier 1 and Tier 2 results in Pre-Design Investigation samples, Segment 1 (RM 3.0 to RM 3.5)**  
 December 4, 2020  
**DRAFT**  
 LDW UPPER REACH PRE-DESIGN INVESTIGATION PHASE 1 DATA PACKAGE

Prepared by craigh\_12/03/20: W:\Projects\Duwamish AOC\GIS\Maps and Analyses\Field\WorkData Package\7234\_Tier 1-2\_Locations - Segment 1.mxd

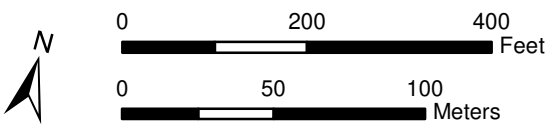
**PHASE I PRE-DESIGN INVESTIGATION VALIDATED TIER 1 AND TIER 2 DATA – WORK IN PROGRESS**



Note: Only Pre-design Investigation Phase 1 sampling locations shown on map. No samples collected in the USACE Nav Dredge area,



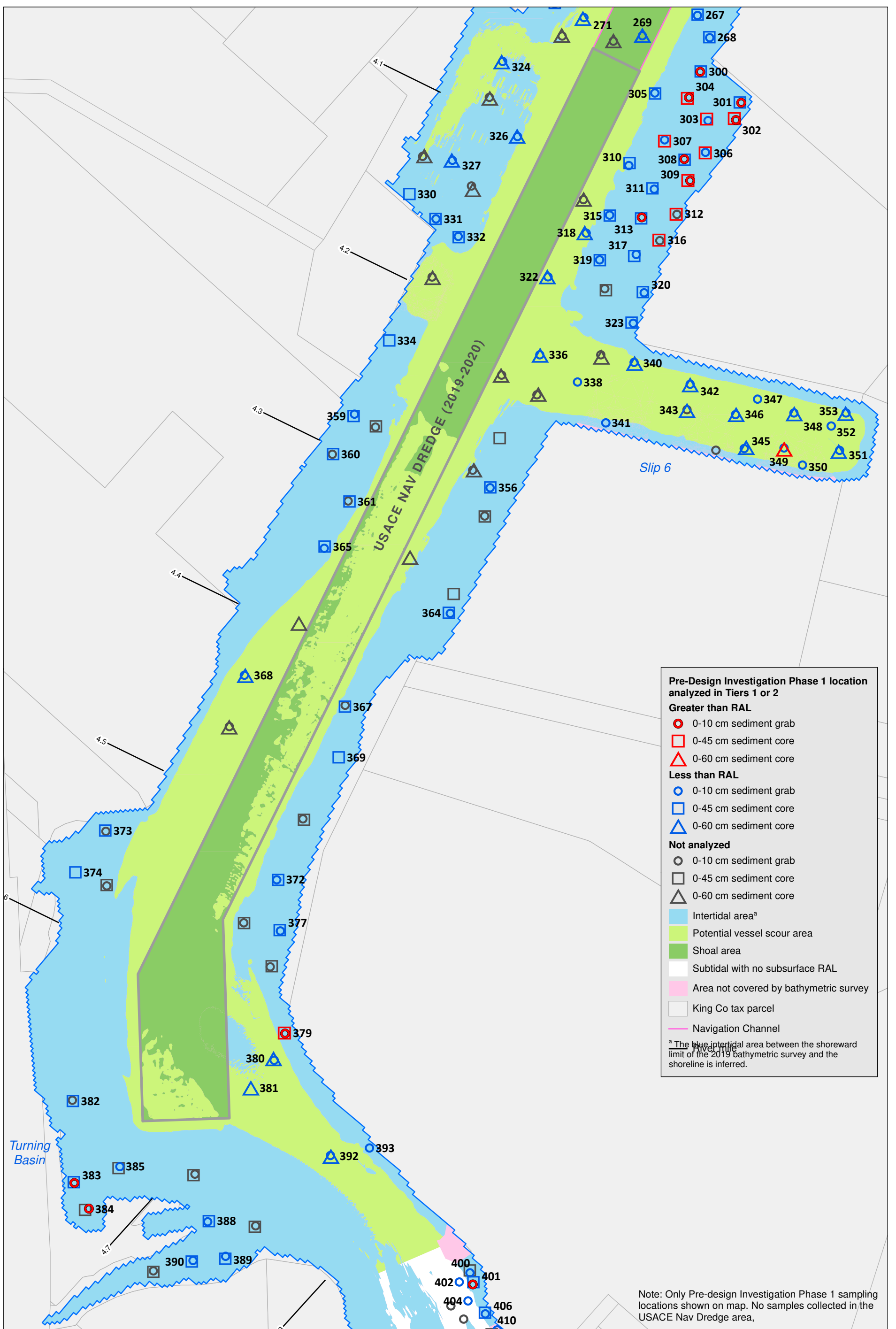
**Lower Duwamish Waterway Group**  
 Port of Seattle / City of Seattle / King County / The Boeing Company



**Map 2b. Tier 1 and Tier 2 results in Pre-Design Investigation samples, Segment 2 (RM 3.5 to RM 4.05)**  
 December 4, 2020  
**DRAFT**  
 LDW UPPER REACH PRE-DESIGN INVESTIGATION PHASE 1 DATA PACKAGE

Prepared by craigh\_12/3/20: W:\Projects\Duwamish\AOC\GIS\Maps and Analyses\Field\WorkData Package\7234\_Tier 1-2 Locations - Segment 2.mxd

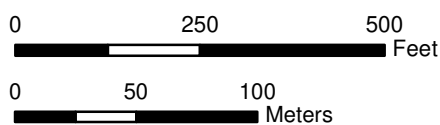
**PHASE I PRE-DESIGN INVESTIGATION VALIDATED TIER 1 AND TIER 2 DATA – WORK IN PROGRESS**



Note: Only Pre-design Investigation Phase 1 sampling locations shown on map. No samples collected in the USACE Nav Dredge area,



**Lower Duwamish Waterway Group**  
 Port of Seattle / City of Seattle / King County / The Boeing Company

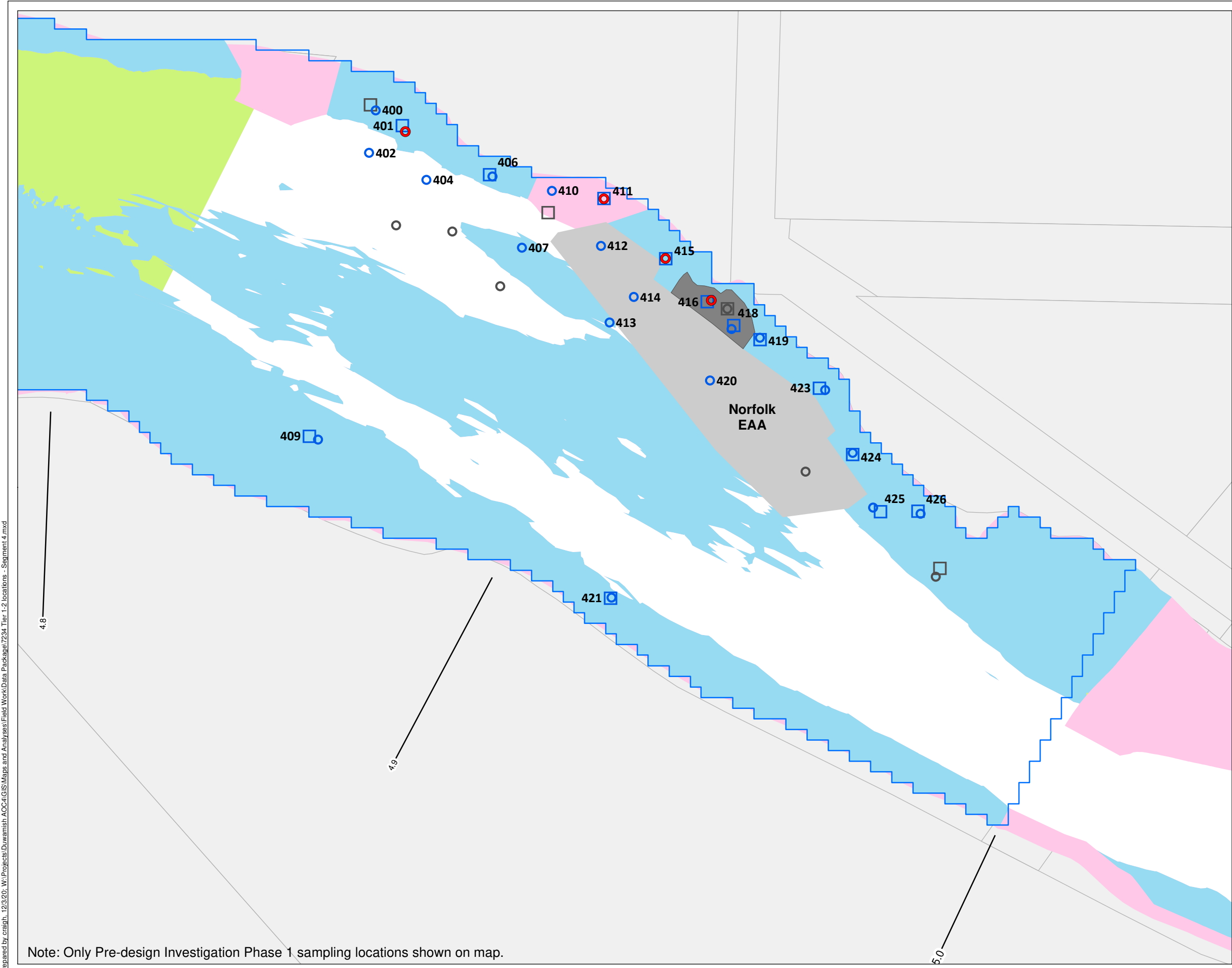


**Map 2c. Tier 1 and Tier 2 results in Pre-Design Investigation samples, Segment 3 (RM 4.05 to RM 4.81)**  
 December 4, 2020

**DRAFT**

LDW UPPER REACH PRE-DESIGN INVESTIGATION PHASE 1 DATA PACKAGE

**PHASE I PRE-DESIGN INVESTIGATION VALIDATED TIER 1 AND TIER 2 DATA – WORK IN PROGRESS**



**Pre-Design Investigation Phase 1 location analyzed in Tiers 1 or 2**

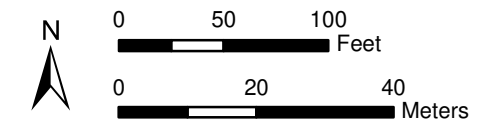
**Greater than RAL**  
 ● 0-10 cm sediment grab

**Less than RAL**  
 ○ 0-10 cm sediment grab  
 □ 0-45 cm sediment core

**Not analyzed**  
 ○ 0-10 cm sediment grab  
 □ 0-45 cm sediment core

**Classification**  
 ■ Intertidal area<sup>a</sup>  
 ■ Potential vessel scour area  
 ■ Subtidal with no subsurface RAL  
 ■ Area not covered by bathymetric survey  
 ■ Boeing South Storm Drain  
 ■ Early Action Area  
 ■ King Co tax parcel  
 — River mile

<sup>a</sup> The blue intertidal area between the shoreward limit of the 2019 bathymetric survey and the shoreline is inferred.



**Map 2d. Tier 1 and Tier 2 results in Pre-Design Investigation samples, Segment 4 (RM 4.81 to RM 5.0)**  
 December 4, 2020  
**DRAFT**  
 LDW UPPER REACH PRE-DESIGN INVESTIGATION PHASE 1 DATA PACKAGE

**Windward**  
 environmental LLC

**Lower Duwamish Waterway Group**  
 Port of Seattle / City of Seattle / King County / The Boeing Company

Prepared by craig\_h\_12/2/20; W:\Projects\Duwamish ACC\GIS\Maps and Analyses\FieldWorkData Package\7234\_Tier 1-2 locations - Segment 4.mxd

Note: Only Pre-design Investigation Phase 1 sampling locations shown on map.