

Figure 1a. Clam sampling location priority (RM 0-1.2)



WindWard
 environmental LLC

Prepared by RAC 08/01/03 Map 985



Figure 1b. Clam sampling location priority (RM 1.2-2.4)



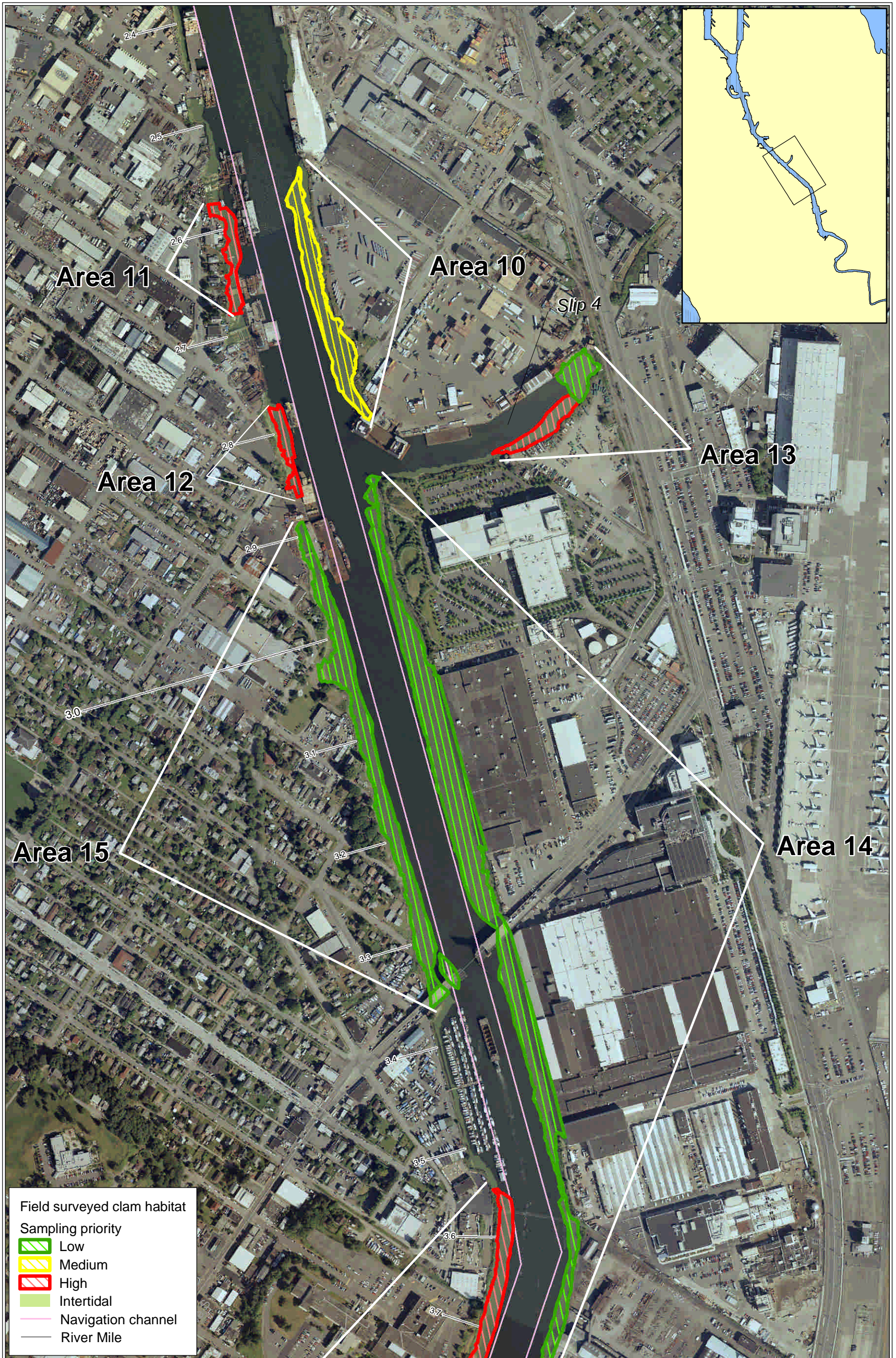
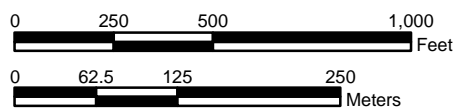


Figure 1c. Clam sampling location priority (RM 2.4-3.6)



WindWard
environmental LLC

Prepared by RAC 08/01/03 Map 987

W:\Projects\00-08-06_Duwamish_RI\data\gis\InvertebrateSurvey

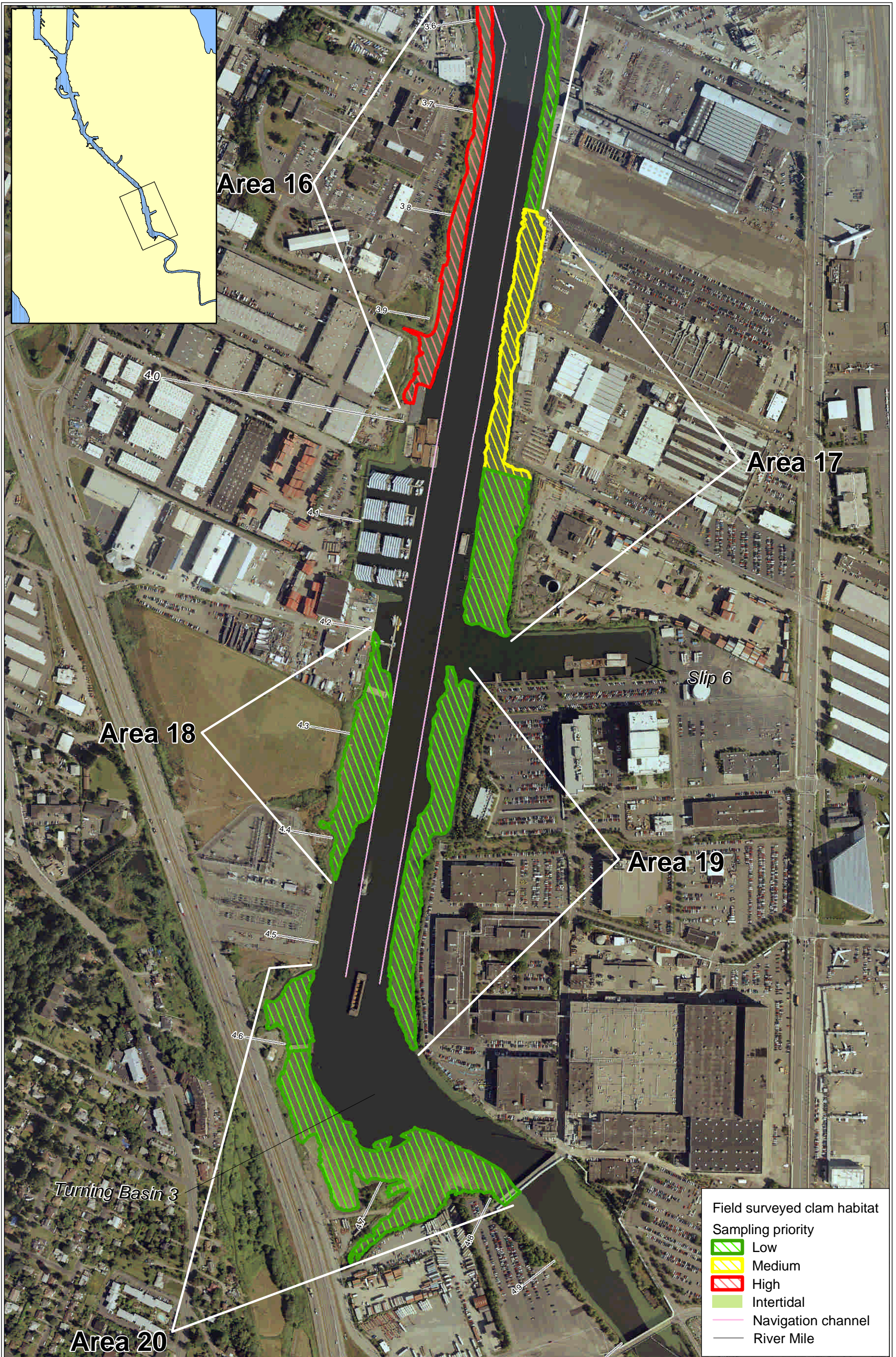
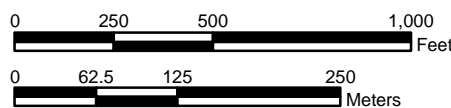


Figure 1d. Clam sampling location priority (RM 3.6-4.9)



WindWard
environmental LLC

Prepared by RAC 08/01/03 Map 988

W:\Projects\00-08-06_Duwamish_RI\data\gis\InvertebrateSurvey