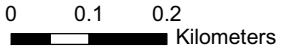
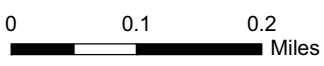
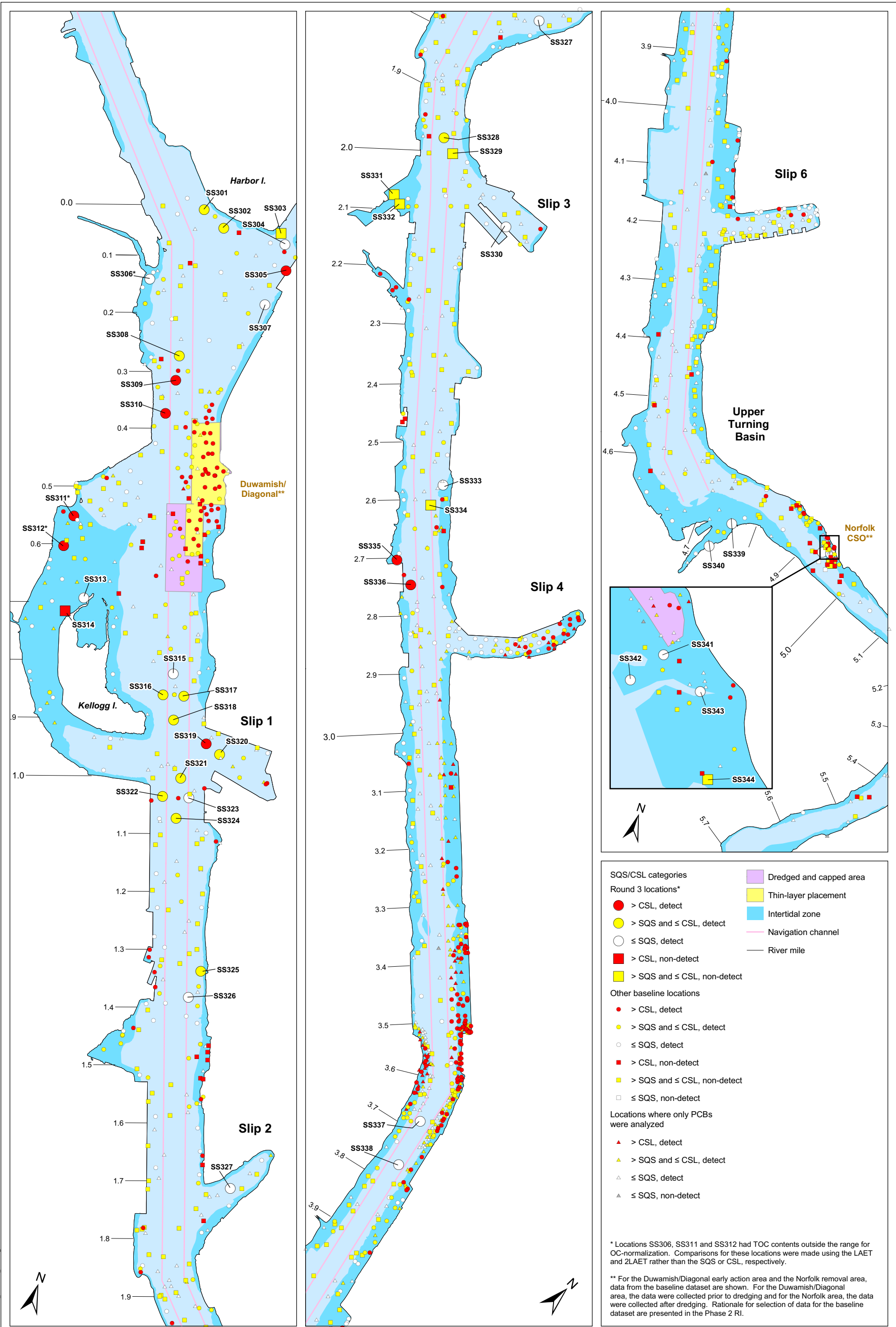


- Actual 2006 Round 3 sampling location
- Target 2006 Round 3 sampling location
- Bridge
- Building
- Dock/pier
- Marina
- Intertidal zone
- Navigation channel
- River mile

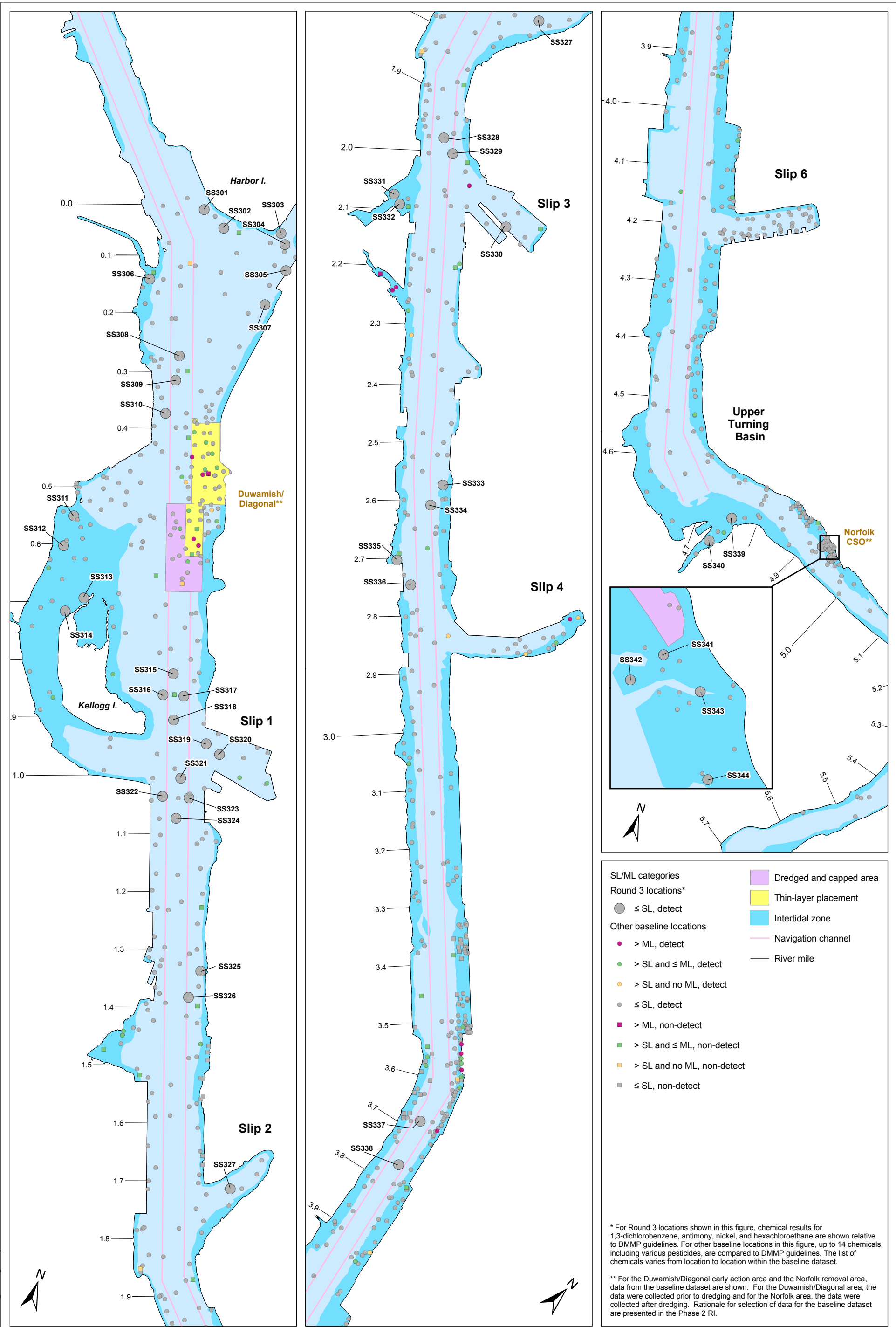


Scale is the same for each inset map

**Figure 2-1. Round 3 target and actual surface sediment sampling locations**



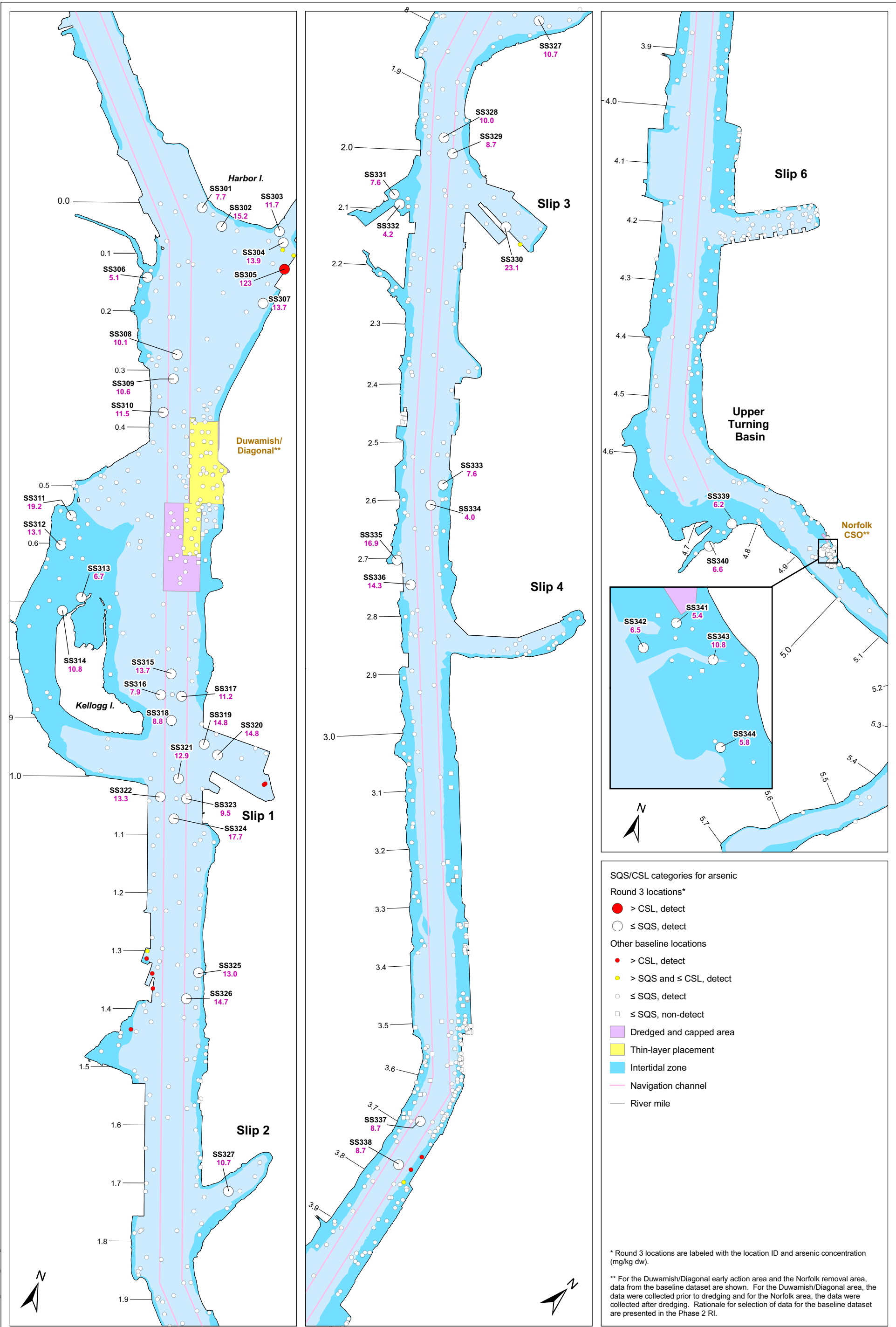
**Figure 4-1. Exceedances of SMS criteria (SQS or CSL) by at least one chemical in surface sediment at Round 3 and other baseline locations**



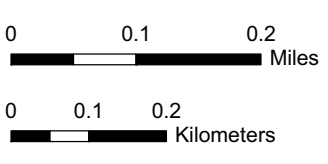
\* For Round 3 locations shown in this figure, chemical results for 1,3-dichlorobenzene, antimony, nickel, and hexachloroethane are shown relative to DMMP guidelines. For other baseline locations in this figure, up to 14 chemicals, including various pesticides, are compared to DMMP guidelines. The list of chemicals varies from location to location within the baseline dataset.

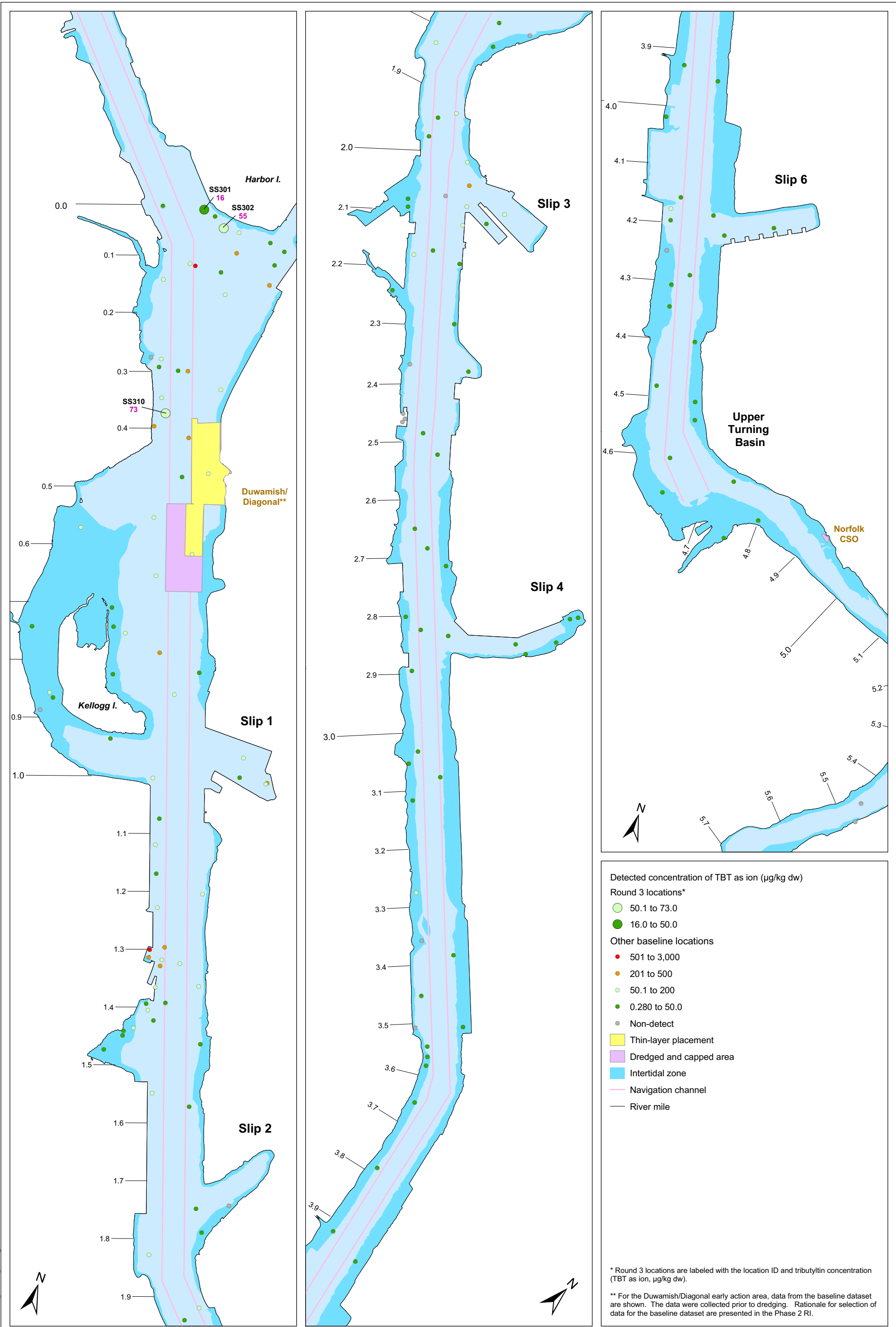
\*\* For the Duwamish/Diagonal early action area and the Norfolk removal area, data from the baseline dataset are shown. For the Duwamish/Diagonal area, the data were collected prior to dredging and for the Norfolk area, the data were collected after dredging. Rationale for selection of data for the baseline dataset are presented in the Phase 2 RI.

**Figure 4-2. Exceedances of DMMP guidelines (SL or ML) by chemicals that do not have SMS criteria (SQS or CSL) in surface sediment at Round 3 and other baseline locations**



**Figure 4-3. Exceedances of SMS criteria (SQS or CSL) by arsenic in surface sediment at Round 3 and other baseline locations**





**Detected concentration of TBT as ion ( $\mu\text{g}/\text{kg dw}$ )**

**Round 3 locations\***

- 50.1 to 73.0
- 16.0 to 50.0

**Other baseline locations**

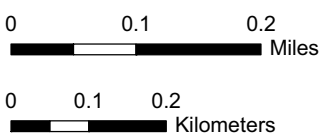
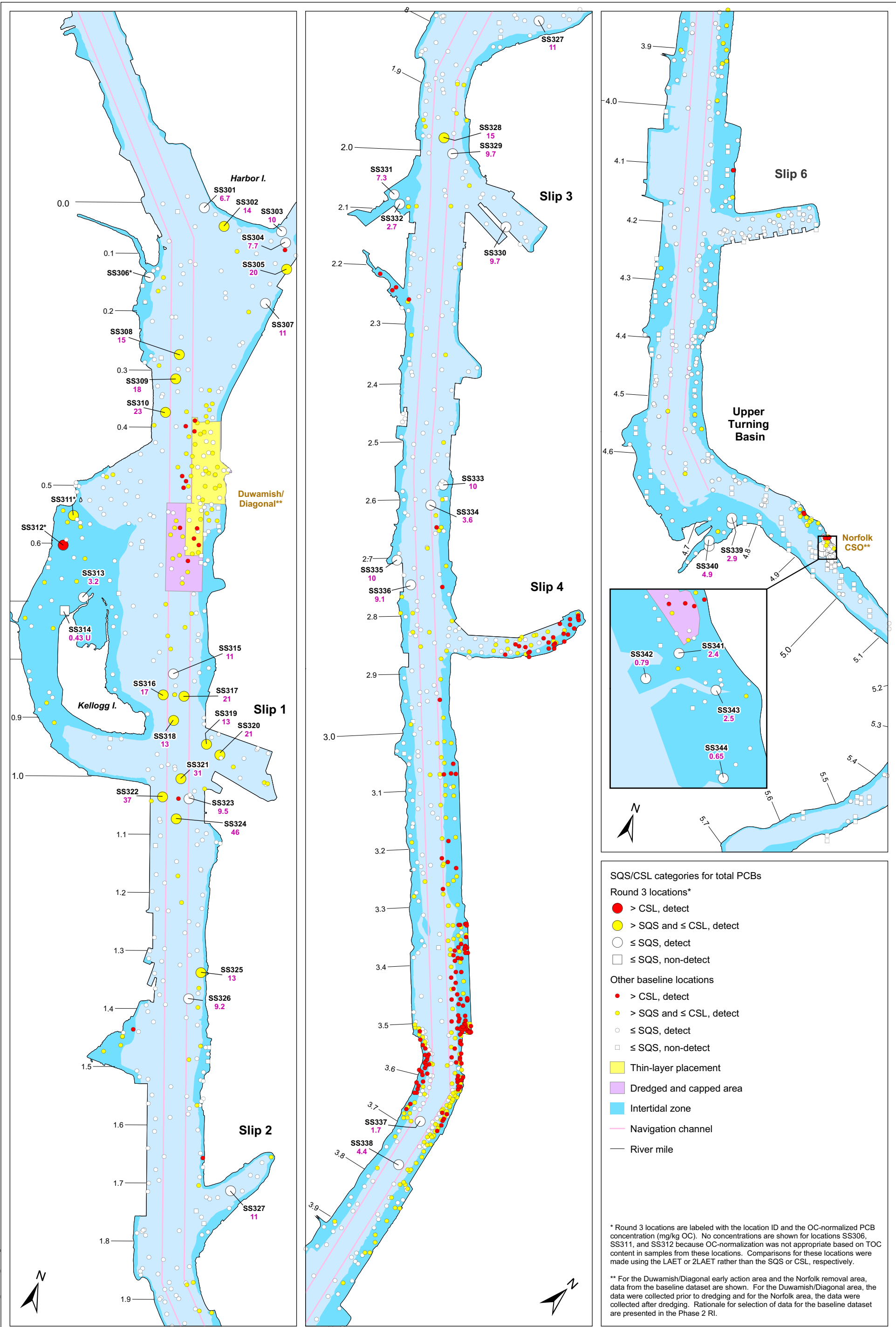
- 501 to 3,000
- 201 to 500
- 50.1 to 200
- 0.280 to 50.0
- Non-detect

- Thin-layer placement
- Dredged and capped area
- Intertidal zone
- Navigation channel
- River mile

\* Round 3 locations are labeled with the location ID and tributyltin concentration (TBT as ion,  $\mu\text{g}/\text{kg dw}$ ).

\*\* For the Duwamish/Diagonal early action area, data from the baseline dataset are shown. The data were collected prior to dredging. Rationale for selection of data for the baseline dataset are presented in the Phase 2 RI.

**Figure 4-4. Concentrations of tributyltin in surface sediment at Round 3 and other baseline locations**



Scale is the same for each inset map

**Figure 4-5. Exceedances of SMS criteria (SQS or CSL) by total PCBs in surface sediment at Round 3 and other baseline locations**

