

APPENDIX F: GRAPHICAL REPRESENTATIONS OF THE PCB CONGENER DATA

Table F-1. Benthic invertebrate and clam tissue total PCBs calculated as total Aroclors and total congeners and mammalian TEQ values

SAMPLE ID	PCBs (TOTAL AROCLORS) (µg/kg ww)	PCBs (TOTAL CONGENERS) (µg/kg ww)	MAMMALIAN TEQ (HALF RL) (ng/kg ww)
LDW-B1b-T	100	212.9 J	3.89 J
LDW-B2a-T	180	154.2 J	3.45
LDW-B3b-T	310	350 J	7.30
LDW-B4b-T	160	260 J	4.80
LDW-B5a-T	1,390	732 J	10.9
LDW-B8a-T	1,400	1,350 J	12.0 J
LDW-B9b-T	99 J	63.8 J	1.11 J
LDW-B10a-T	62 J	32.1 J	0.572 J
LDW-C1-T	24	41.0 J	0.643
LDW-C2-T2	29	51.5 J	0.746
LDW-C4-T	31	46.5 J	0.691
LDW-C6-T	34	52.1 J	0.816 J
LDW-C7-T1	220 J	309 J	3.67 J
LDW-C8-T	580 J	930 J	9.91 J
LDW-C9-T	50	79.0 J	1.13 J
LDW-C10-T1	320	260 J	1.90 J

Data qualifiers: J – estimated concentration

TEQ – toxic equivalents

RL – reporting limit

Table F-2. Sediment total PCBs calculated as total Aroclors and mammalian TEQ values

SAMPLE ID	PCBS (TOTAL AROCLORS) (µg/kg dw)	MAMMALIAN TEQ (HALF RL) (ng/kg dw)
LDW-B1b-S	61 J	0.54 J
LDW-B2a-S	163	2.34 J
LDW-B3b-S	350	7.34 J
LDW-B4b-S	400	5.2 J
LDW-B5a-S1	104 J	1.208 J
LDW-B8a-S	5,900 J	34.6 J
LDW-B9b-S	210	4.46 J
LDW-B10a-S	22	0.814 J
LDW-C1-S	3.1 J	0.1162 J
LDW-C2-S2	99	1.66 J
LDW-C4-S	69	1.309 J
LDW-C6-S	61	0.967 J
LDW-C7-S1	1,000	45.3 J
LDW-C8-S	3,300	132.9 J
LDW-C9-S	35	0.66 J
LDW-C10-S1	6,600	69.3 J

Total PCBs based on the sum of the congeners cannot be calculated for the sediment samples because the samples were not analyzed for all 209 congeners

Data qualifiers: J – estimated concentration

TEQ – toxic equivalents

RL – reporting limit

Figure F-1. Total PCBs (sum of detected Aroclors) vs. total PCBs (sum of detected PCB congeners) in benthic invertebrate tissue samples

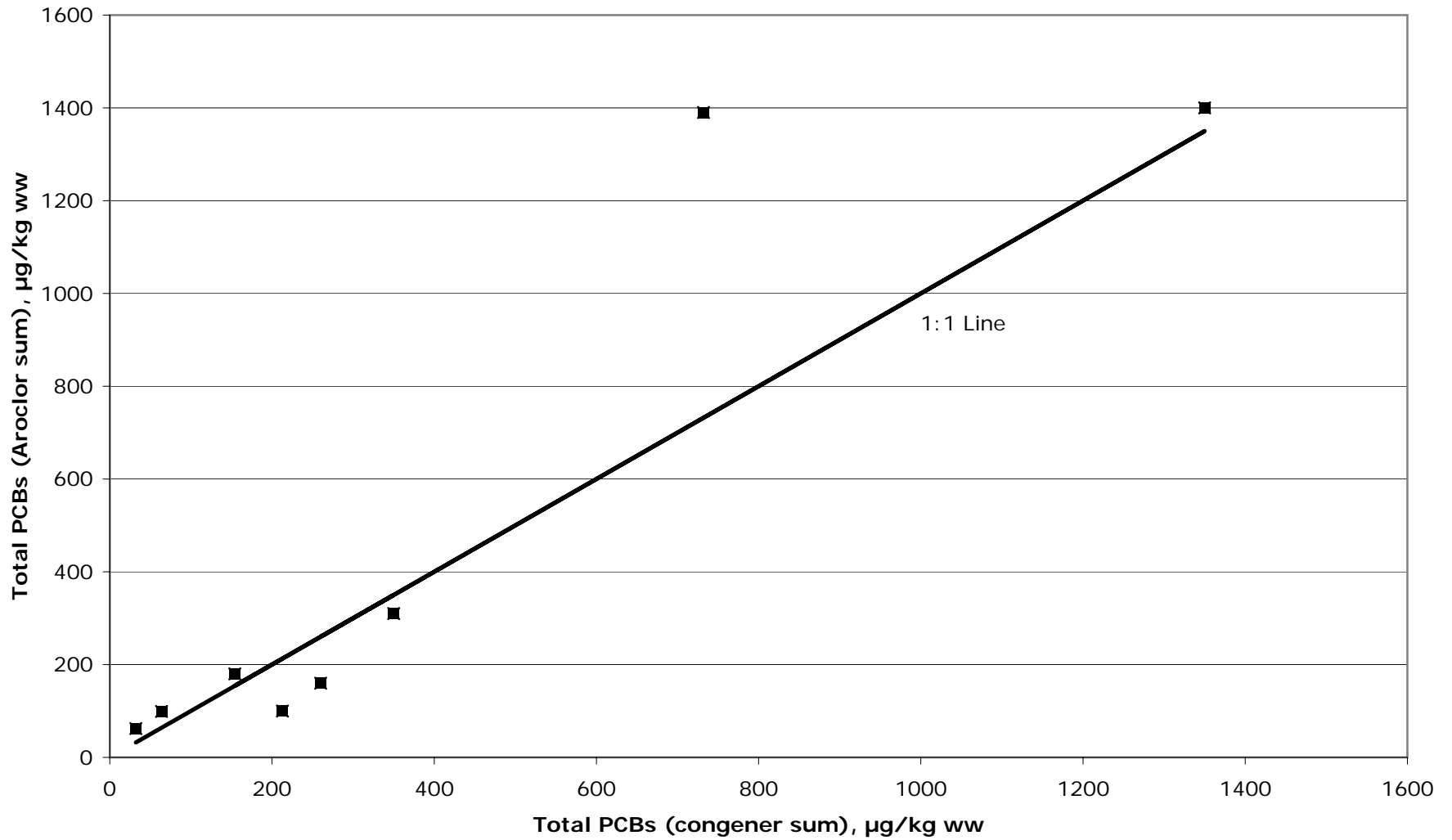


Figure F-2. Total PCBs (sum of detected Aroclors) vs. total PCBs (sum of detected congeners) in clam tissue samples

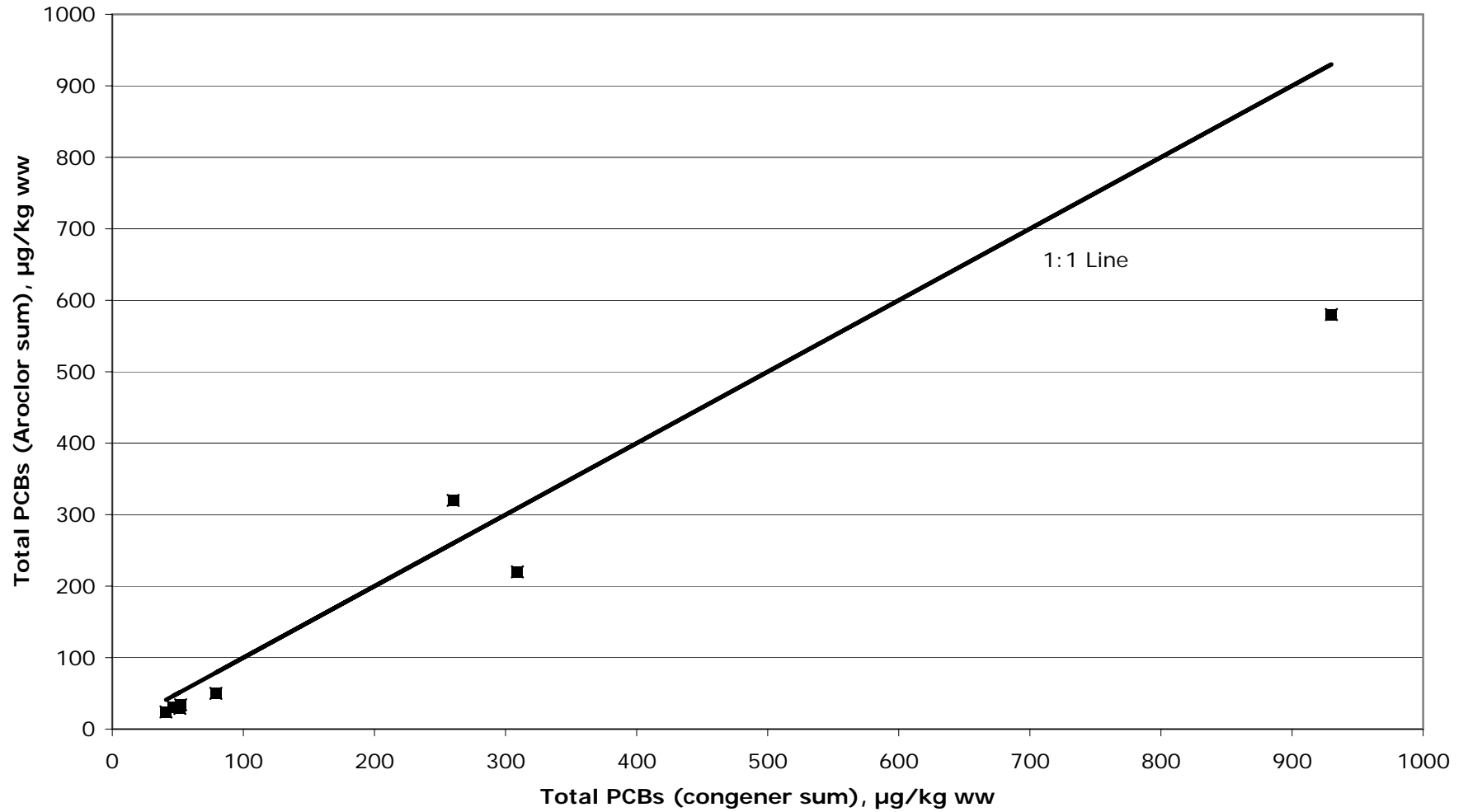


Figure F-3. Total PCBs (sum of detected Aroclors) vs. mammalian TEQs (half RL) in the benthic invertebrate tissue samples

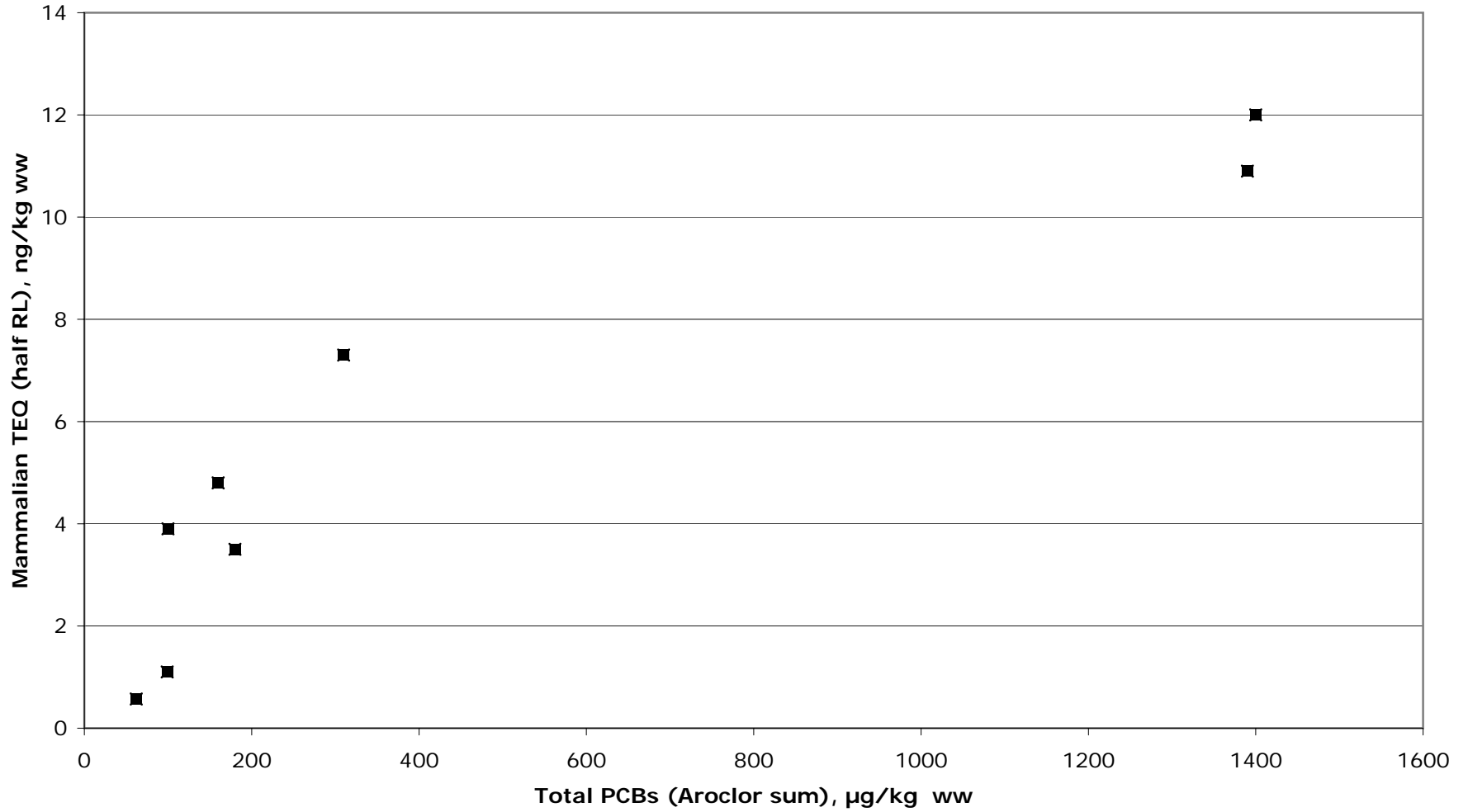


Figure F-4. Total PCBs (sum of detected Aroclors) vs. mammalian TEQs (half RL) in the clam tissue samples

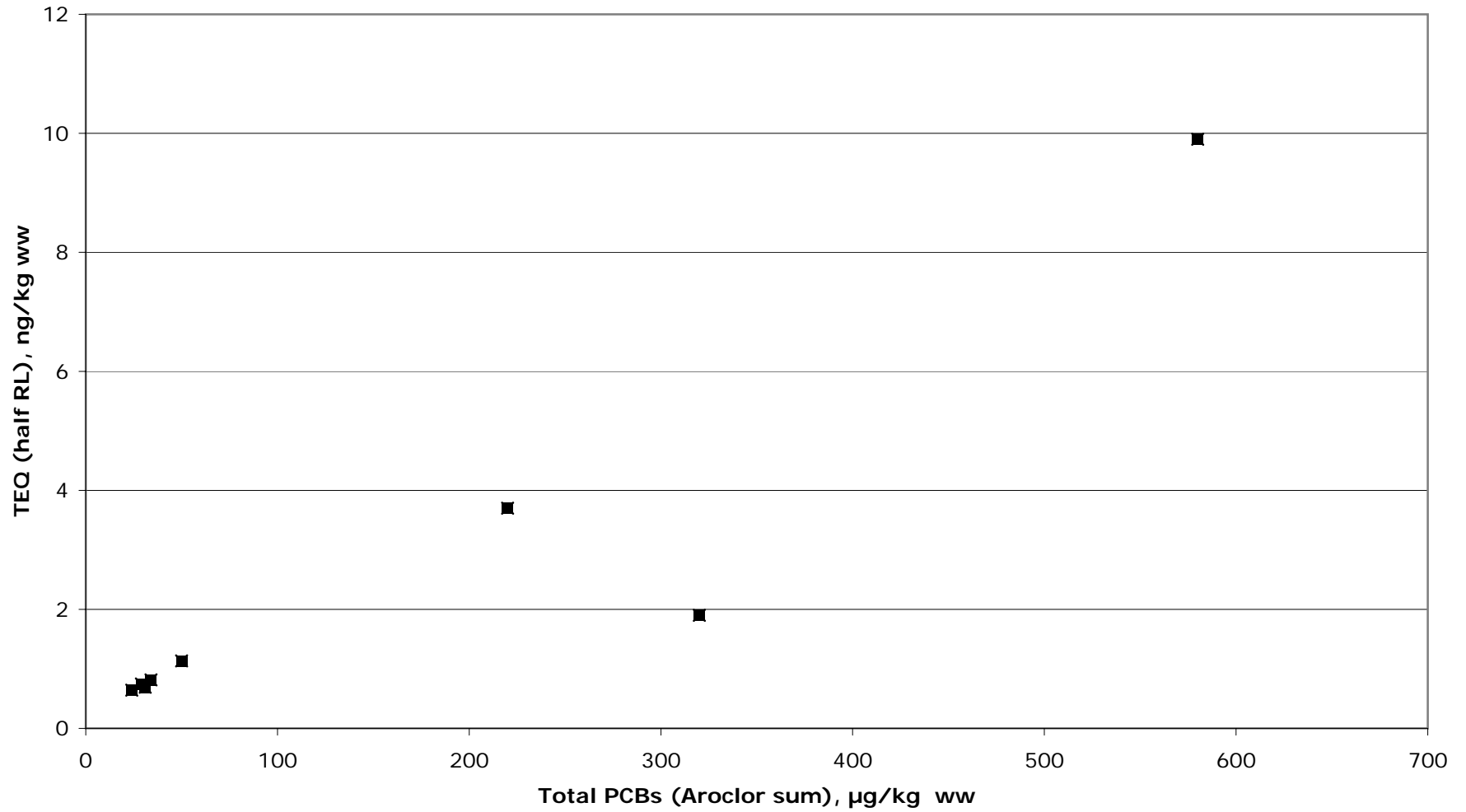


Figure F-5. Total PCBs (sum of detected Aroclors) vs. mammalian TEQs (half RL) in the sediment samples co-located with the benthic invertebrate tissue samples

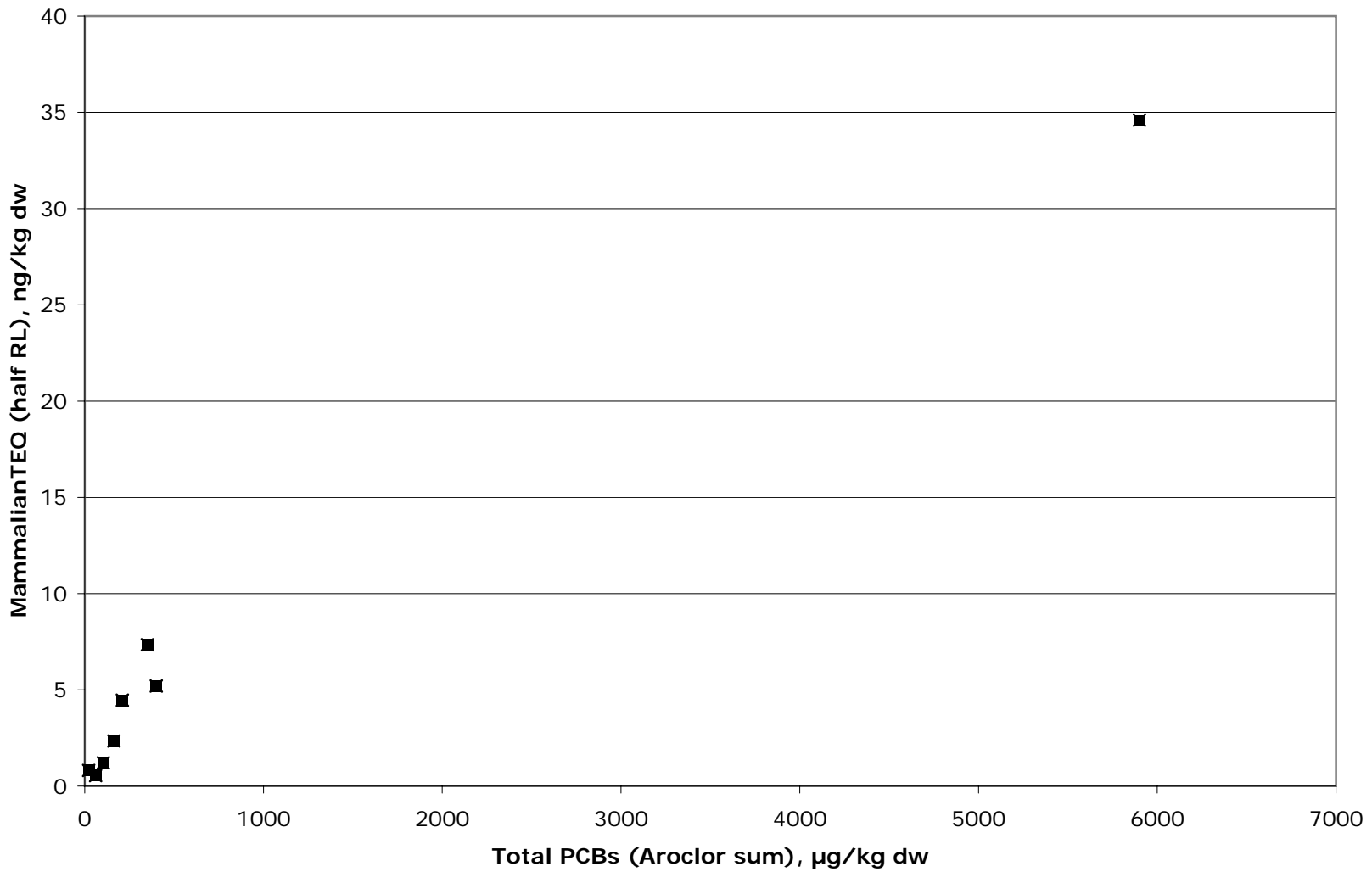


Figure F-6. Total PCBs (sum of detected Aroclors) vs. mammalian TEQs (half RL) in the sediment samples co-located with the clam tissue samples

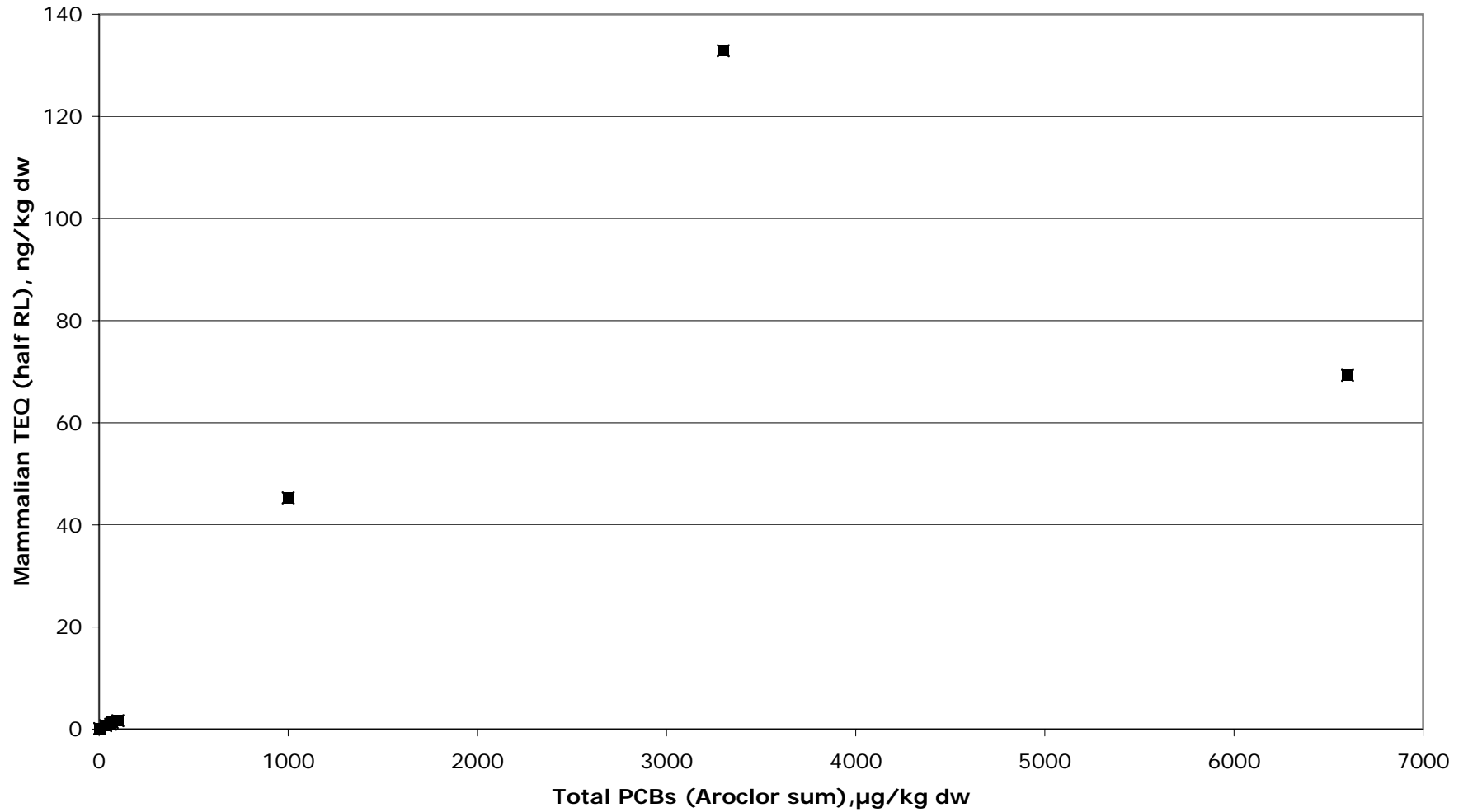


Figure F-7. Percent contribution of the concentrations of selected individual PCB congeners to the sum of the concentrations of all detected PCB congeners in the benthic invertebrate tissue

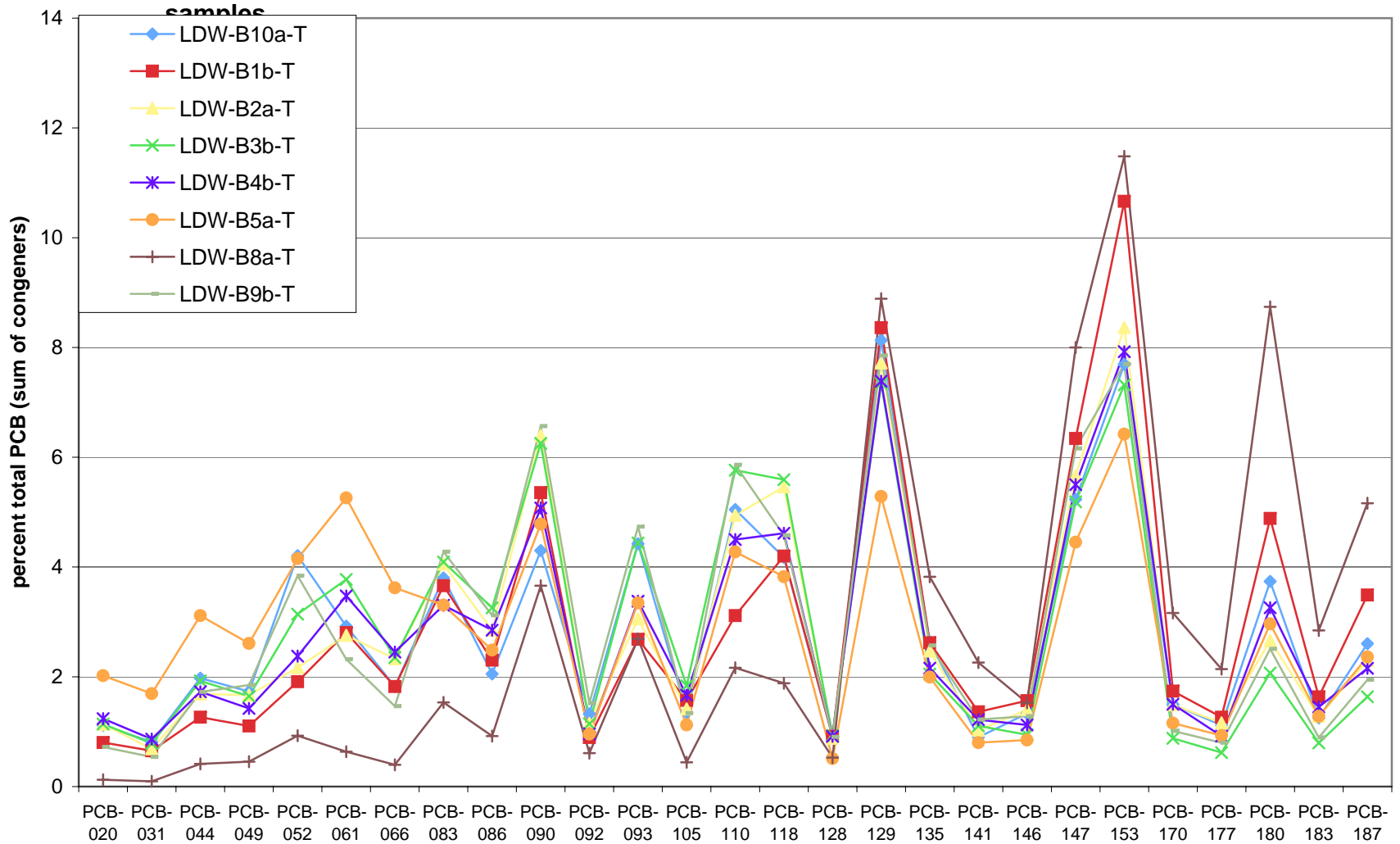


Figure F-8. Percent contribution of selected individual PCB congeners to the sum of the concentrations of all detected PCB congeners in clam tissue samples

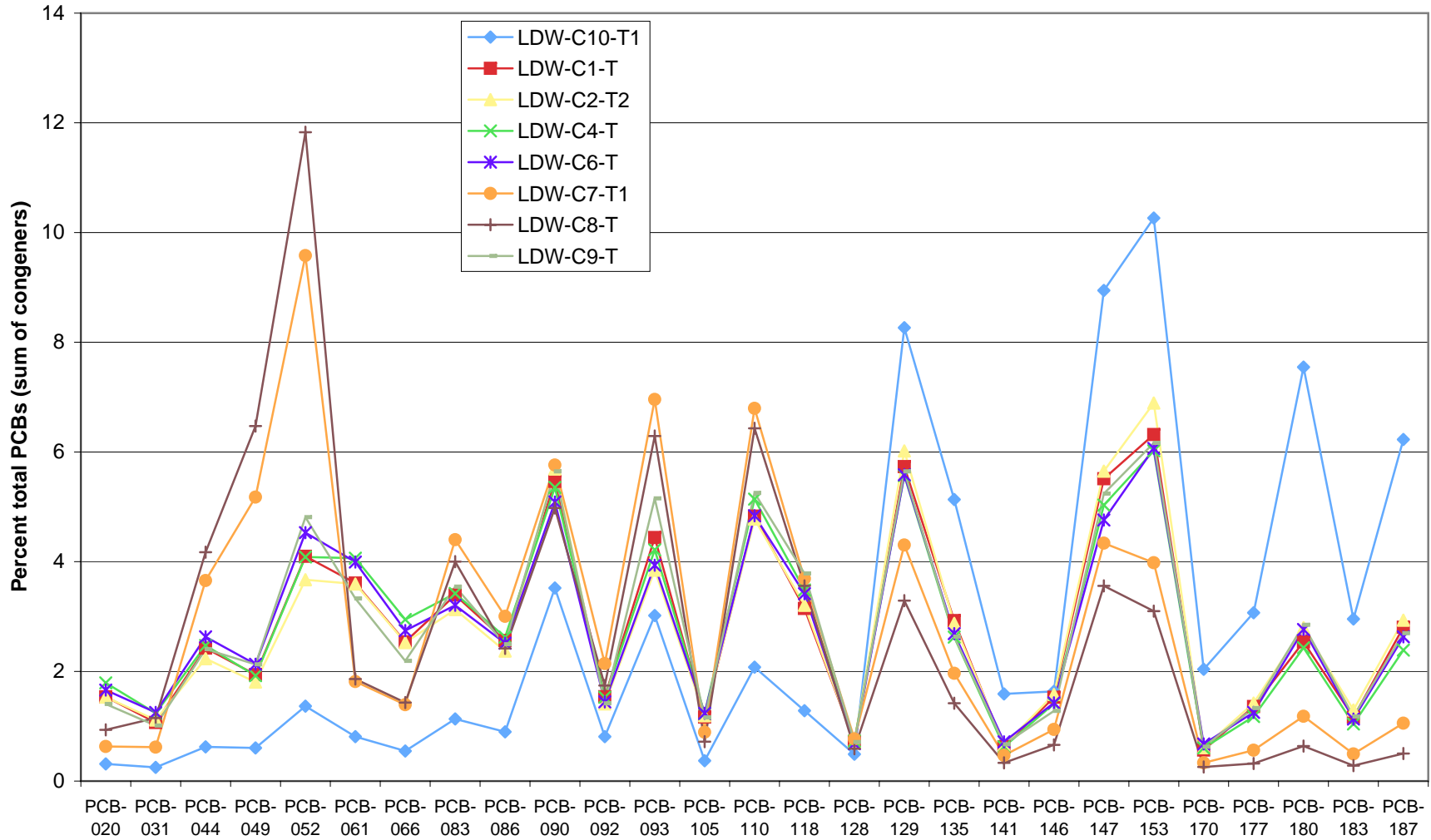


Figure F-9. Percent contribution of concentrations of individual PCB congeners to the sum of the concentrations of all detected dioxin-like and principal PCB congeners in sediment samples co-located with benthic invertebrate and clam tissue samples

