

APPENDIX C. PCB AROCLOR AND CONGENER PLOTS

Appendix C PCB Aroclor and Congener Plots

<i>Table C-1. Total PCB (as sum of Aroclors and sum of congeners) and TEQ data for fish and crab tissue samples analyzed for PCB congeners</i>	1
<i>Figure C-1. Total PCBs (sum of detected Aroclors) vs. total PCBs (sum of detected congeners) in fish tissue samples (whole body)</i>	2
<i>Figure C-2. Total PCBs (sum of detected Aroclors) vs. total PCBs (sum of detected congeners) in crab tissue samples (edible meat and hepatopancreas)</i>	3
<i>Figure C-3. Total PCBs (sum of detected PCB congeners) vs. mammalian TEQ (half RL) in fish tissue samples (whole body)</i>	4
<i>Figure C-4. Total PCBs (sum of detected PCB congeners) vs. mammalian TEQ (full RL) in crab tissue samples (edible meat and hepatopancreas)</i>	5
<i>Figure C-5. Percent contribution of concentrations of selected PCB congeners to the sum of the concentrations of all detected PCB congeners for English sole whole body tissue samples</i>	6
<i>Figure C-6. Percent contribution of concentrations of selected PCB congeners to the sum of the concentrations of all detected PCB congeners for shiner surfperch whole body tissue samples</i>	7
<i>Figure C-7. Percent contribution of concentrations of selected PCB congeners to the sum of the concentrations of all detected PCB congeners in crab tissue samples (edible meat and hepatopancreas)</i>	8

Table C-1. Total PCB concentrations (as sum of Aroclors and sum of PCB congeners) and TEQs for fish and crab tissue samples analyzed for PCB congeners

SPECIES TISSUE TYPE AND SAMPLE ID	TOTAL PCBs (SUM OF CONGENERS) ^a (µg/kg ww)	TOTAL PCBs (SUM OF AROCLORS) ^a (µg/kg ww)	MAMMALIAN TEQ ^b (ng/kg ww)
English sole – whole body			
LDW-07-T1-M-ES-WB-comp3	1,165	460	10.1
LDW-07-T1-M-ES-WB-comp5	774	420	5.74
LDW-07-T2-A-ES-WB-comp2	1,632	870	15.0
LDW-07-T2-A-ES-WB-comp4	1,603	750	14.5
LDW-07-T3-M-ES-WB-comp4	2,928	1,600	25.0
LDW-07-T3-M-ES-WB-comp6	1,032	600	7.00
Shiner perch – whole body			
LDW-07-T1-B-SS-WB-comp1	974	220	12.1
LDW-07-T1-C-SS-WB-comp1	504.1	360	7.29
LDW-07-T2-B-SS-WB-comp1	401.6	290	5.54
LDW-07-T2-E-SS-WB-comp1	648.3	470	8.00
LDW-07-T3-E-SS-WB-comp1	1,103	740	7.87
LDW-07-T3-F-SS-WB-comp1	2,462	1,330	12.2
Dungeness crab – edible meat			
LDW-07-T1-M-DC-EM-comp1	49.45	15	0.553
LDW-07-T3-M-DC-EM-comp3	86.2	51	0.761
Slender crab – edible meat			
LDW-07-T1-M-SC-EM-comp2	112	41	1.40
LDW-07-T2-M-SC-EM-comp1	86.2	40	1.17
Dungeness crab – hepatopancreas			
LDW-07-T1-M-DC-HP-comp1	612.1	280	8.80

^a The method for calculating total PCBs is presented in Appendix D.

^b The method for calculating PCB TEQs is presented in Appendix D.

PCB – polychlorinated biphenyl

RL – reporting limit

TEQ – toxic equivalent

ww – wet weight

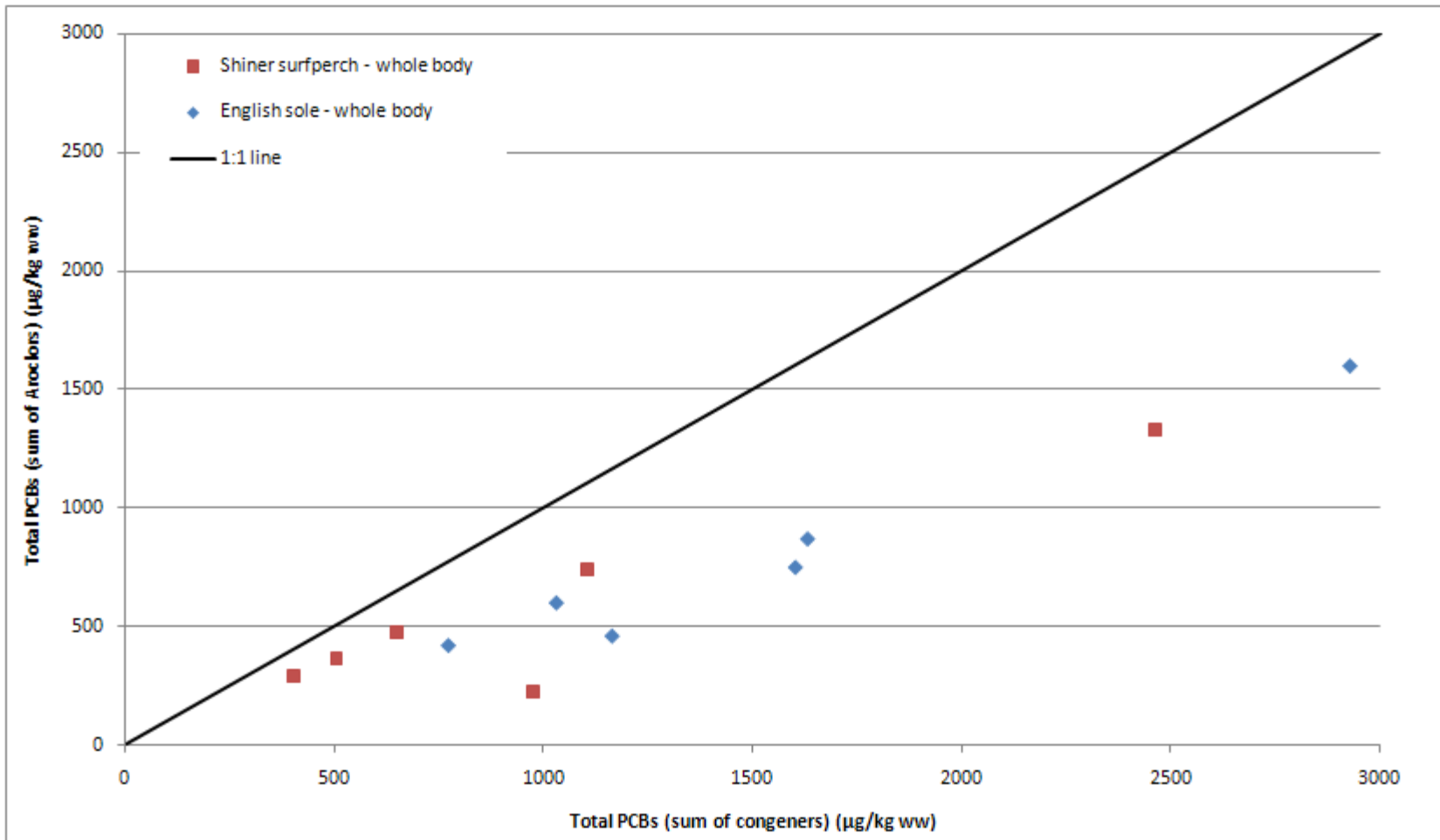


Figure C-1. Total PCB concentrations (sum of detected Aroclors vs. sum of detected PCB congeners) in whole-body fish tissue composite samples

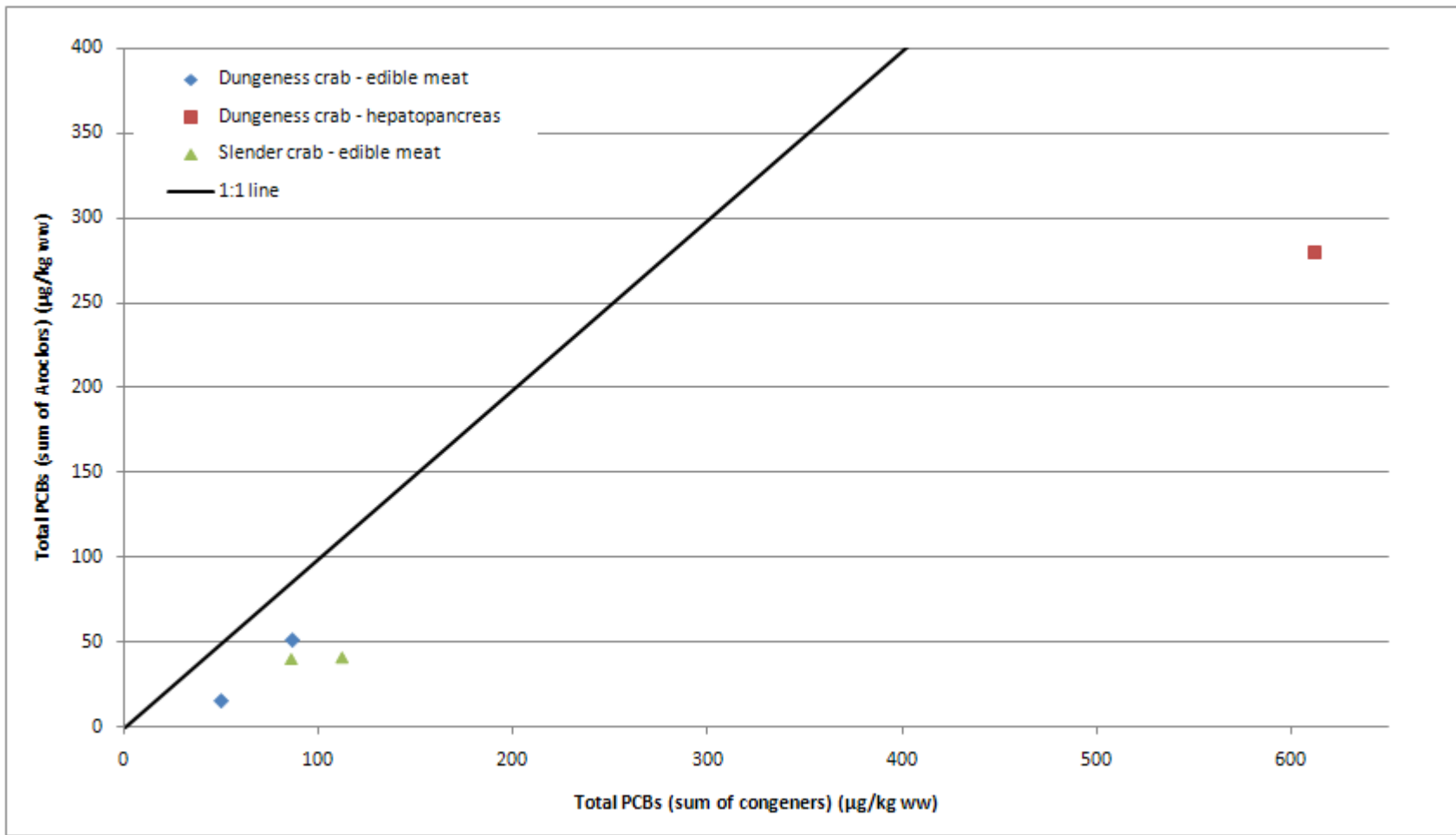


Figure C-2. Total PCB concentrations (sum of detected Aroclors vs. sum of detected PCB congeners) in crab tissue composite samples (edible meat and hepatopancreas)

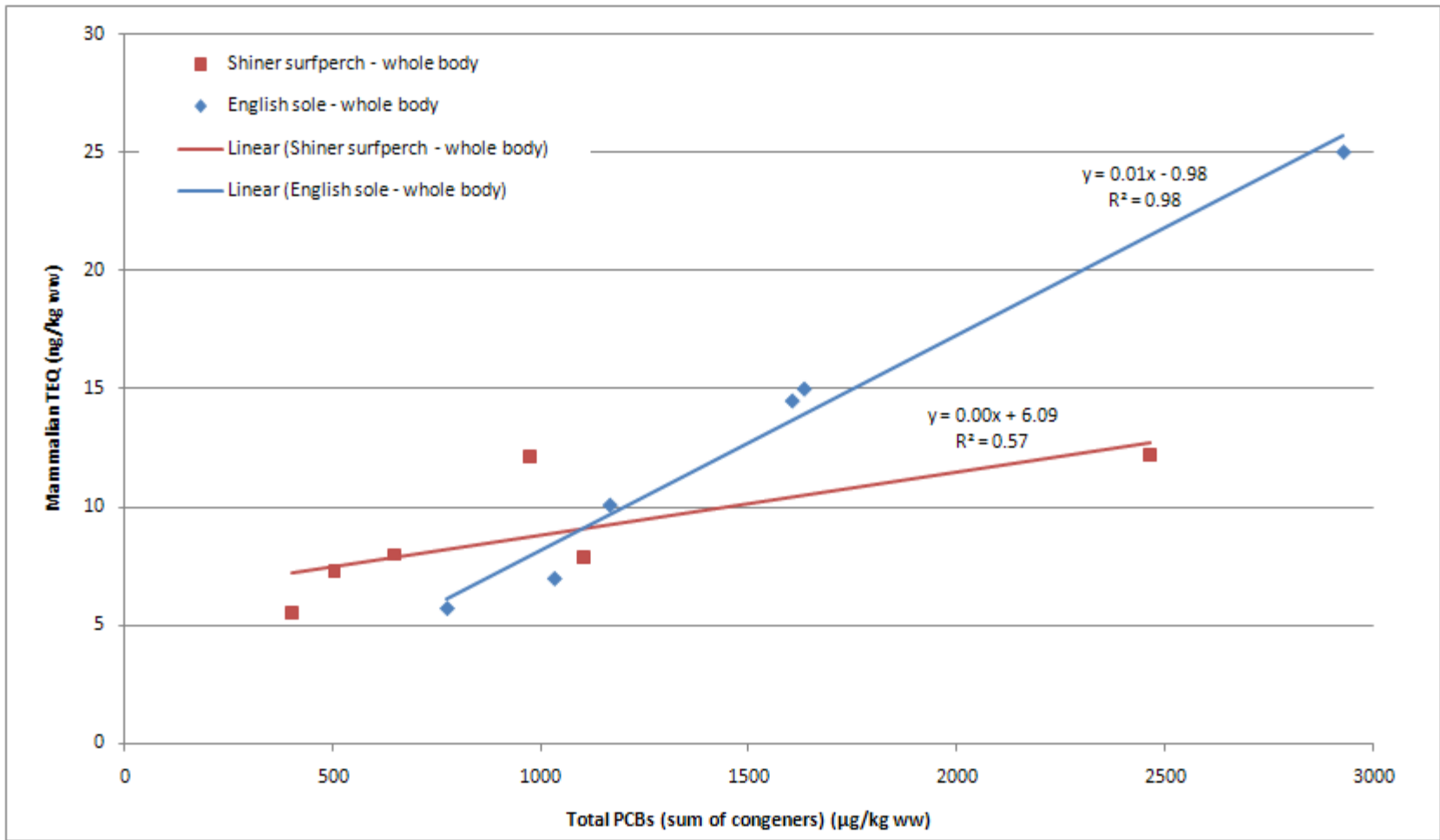


Figure C-3. Total PCB concentrations (sum of detected PCB congeners) vs. mammalian TEQ in whole-body fish tissue composite samples

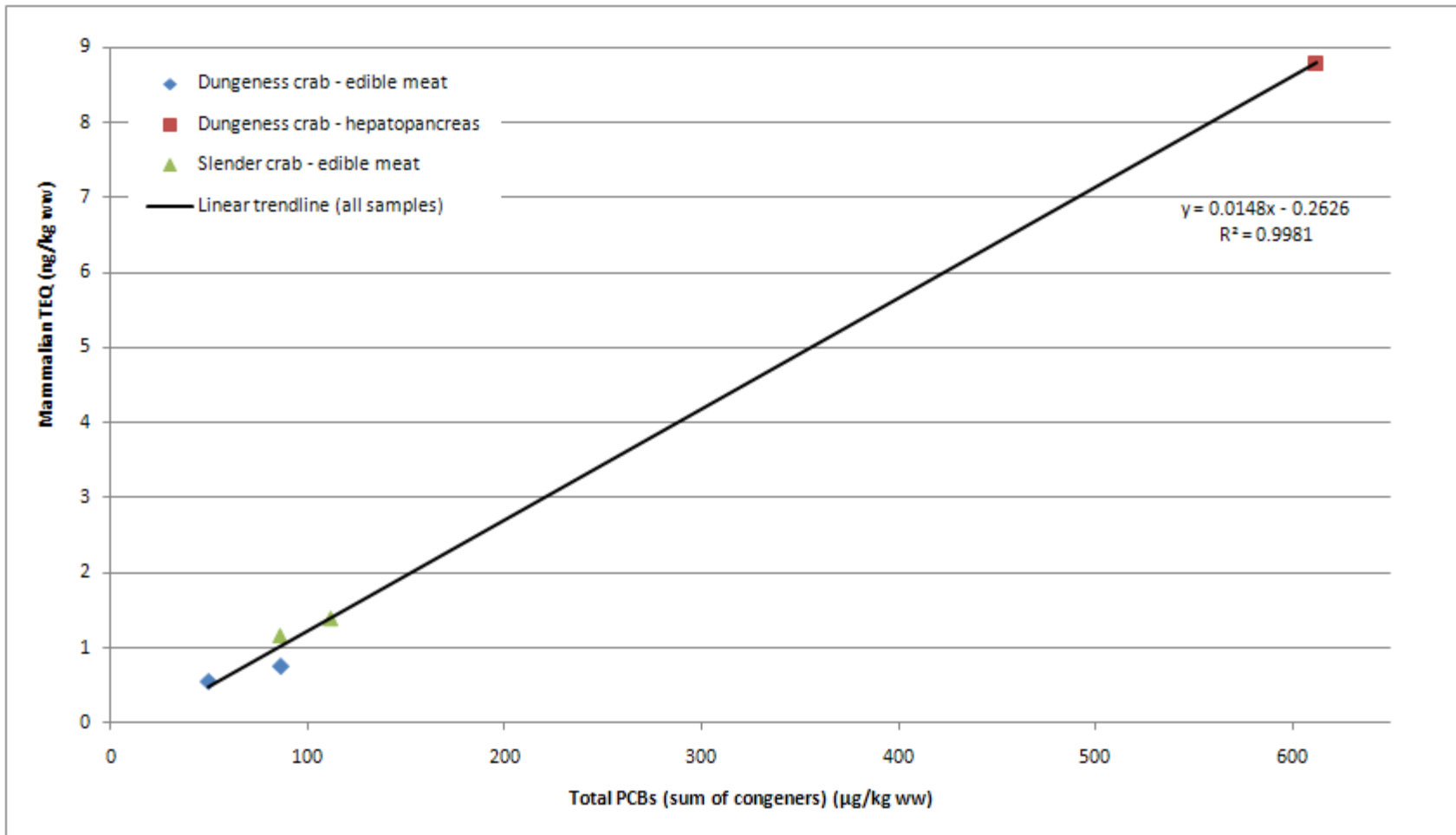


Figure C-4. Total PCB concentrations (sum of detected PCB congeners) vs. mammalian TEQ in crab tissue composite samples (edible meat and hepatopancreas)

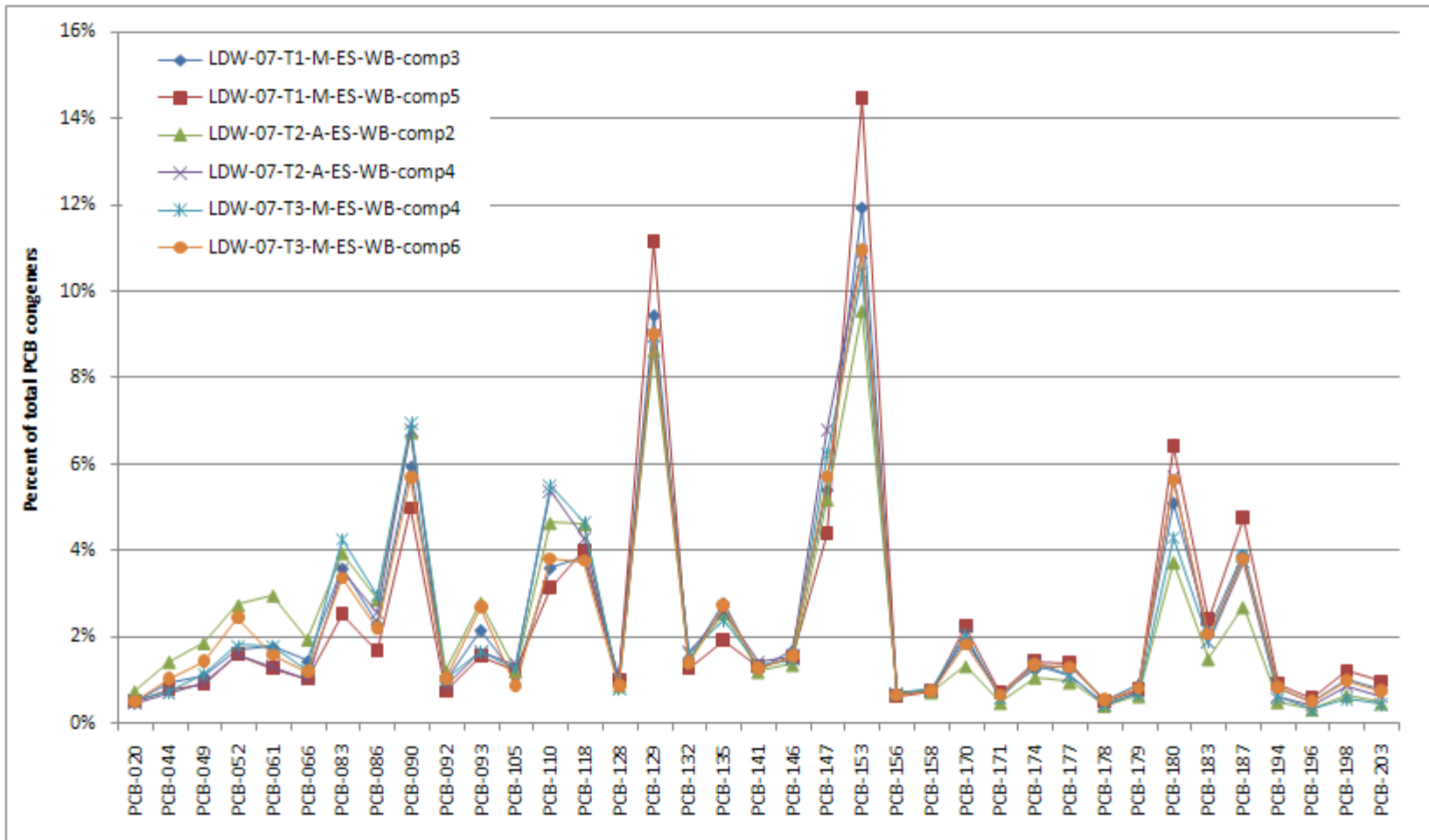


Figure C-5. Percent contribution of concentrations of selected PCB congeners to the sum of the concentrations of all detected PCB congeners in English sole whole-body tissue composite samples

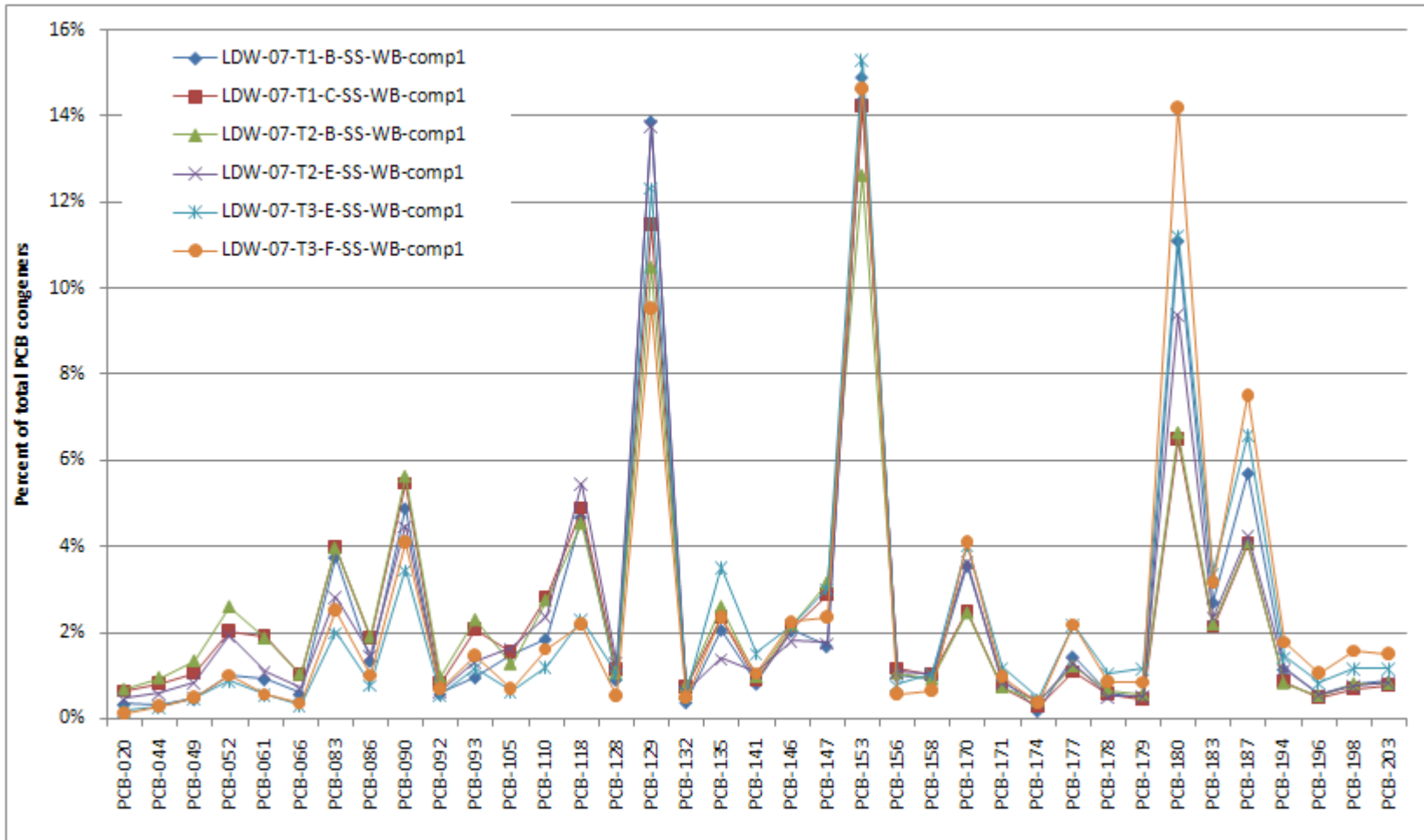


Figure C-6. Percent contribution of concentrations of selected PCB congeners to the sum of the concentrations of all detected PCB congeners in shiner surfperch whole-body tissue composite samples

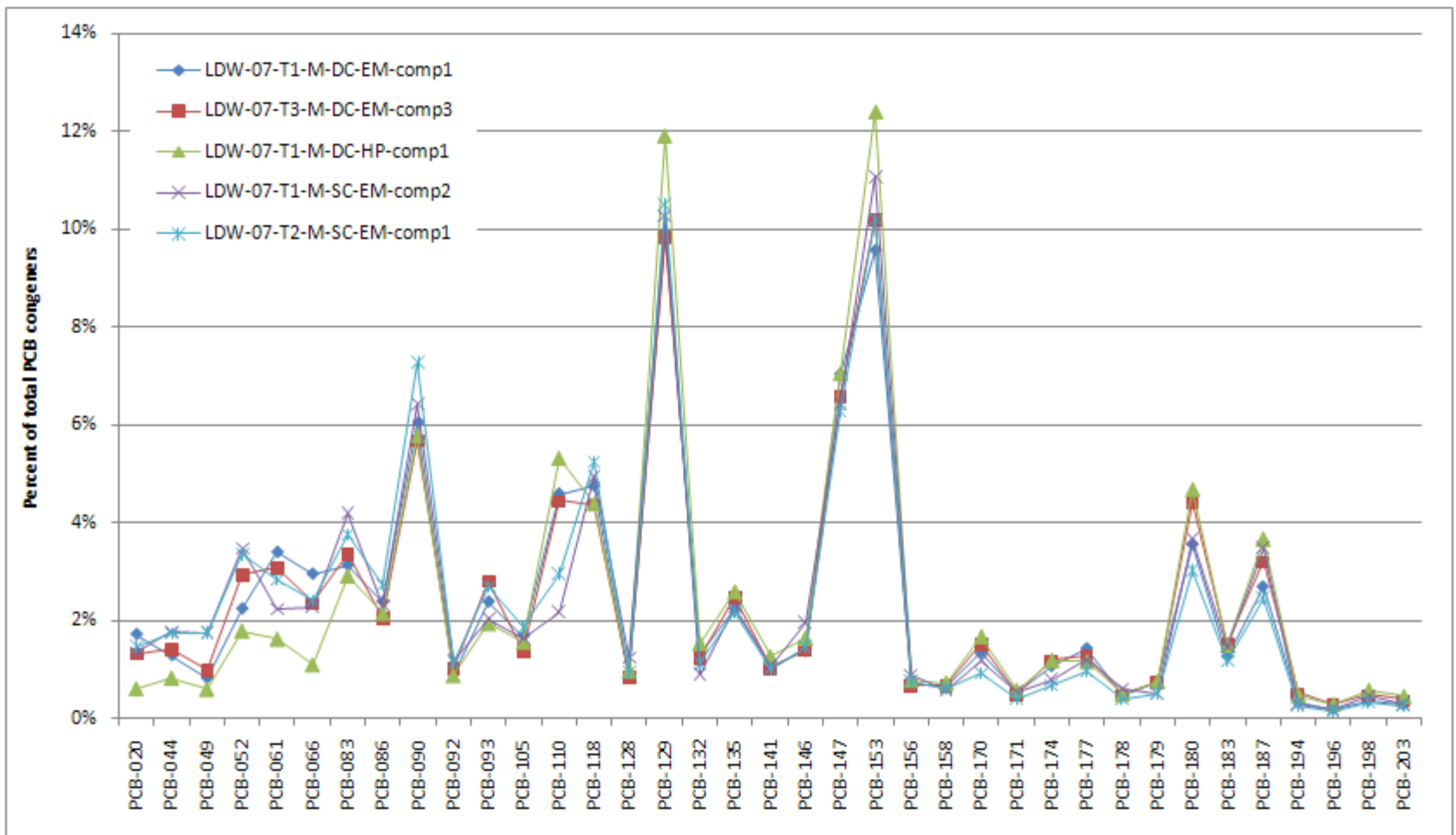


Figure C-7. Percent contribution of concentrations of selected PCB congeners to the sum of the concentrations of all detected PCB congeners in crab tissue composite samples (edible meat and hepatopancreas)