

Table D-1. Third quarterly survey 4-hour soak time results 02/16/2004

Deployment date:	02/16/2004	Retrieval date:	02/16/2004
Higher high tide, ft. MLLW (time):	10.7 (03:05)	Lower high tide, ft. MLLW (time):	10.4 (12:11)
Higher low tide, ft. MLLW (time):	8.2 (07:39)	Lower low tide, ft. MLLW (time):	-1.4 (20:03)
Crew:	Bob Complita, Thai Do, and Maryann Welsch (Windward)		

SAMPLE #	LOCATION		DEPL. TIME	RETR. TIME	SPECIES	LENGTH (MM)	SEX	COMMENTS
	LATITUDE	LONGITUDE						
WWS-1	47 34.134	122 21.036	10:45	14:45	Sunflower star			Crab trap
WWS-1	47 34.134	122 21.036	10:45	14:45	Sunflower star			Crab trap
WWS-1	47 34.134	122 21.036	10:45	na	Shrimp trap, lost to vessel traffic, re-deployed 02/17/2004			
WWS-2	47 34.102	122 20.815	10:50	14:50	<i>C. gracilis</i>	111	M	Crab trap
WWS-2	47 34.102	122 20.815	10:50	14:50	<i>C. gracilis</i>	98	M	Crab trap
WWS-2	47 34.102	122 20.815	10:50	14:50	<i>C. gracilis</i>	97	M	Crab trap
WWS-2	47 34.102	122 20.815	10:50	14:50	<i>C. gracilis</i>	115	M	Crab trap
WWS-2	47 34.102	122 20.815	10:50	14:50	<i>C. gracilis</i>	106	M	Crab trap
WWS-2	47 34.102	122 20.815	10:50	14:50	<i>C. gracilis</i>	114	M	Crab trap
WWS-2	47 34.102	122 20.815	10:50	14:50	<i>C. gracilis</i>	111	M	Crab trap
WWS-2	47 34.102	122 20.815	10:50	14:50	<i>C. gracilis</i>	103	M	Crab trap
WWS-2	47 34.102	122 20.815	10:50	14:50	<i>C. gracilis</i>	95	M	Crab trap
WWS-2	47 34.102	122 20.815	10:50	14:50	<i>C. gracilis</i>	107	M	Crab trap
WWS-2	47 34.102	122 20.815	10:50	14:50	<i>C. gracilis</i>	103	M	Crab trap
WWS-2	47 34.102	122 20.815	10:50	14:50	<i>C. gracilis</i>	104	M	Crab trap
WWS-2	47 34.102	122 20.815	10:50	14:50	<i>C. gracilis</i>	100	M	Crab trap
WWS-2	47 34.102	122 20.815	10:50	14:50	<i>C. gracilis</i>	117	M	Crab trap
WWS-2	47 34.102	122 20.815	10:50	14:50	<i>C. gracilis</i>	97	M	Crab trap
WWS-2	47 34.102	122 20.815	10:50	14:50	<i>C. gracilis</i>	90	M	Crab trap
WWS-2	47 34.102	122 20.815	10:50	14:50	<i>C. gracilis</i>	85	F	Crab trap
WWS-2	47 34.102	122 20.815	10:50	14:50	<i>C. gracilis</i>	99	M	Shrimp trap
WWS-2	47 34.102	122 20.815	10:50	14:50	<i>C. gracilis</i>	94	M	Shrimp trap
WWS-2	47 34.102	122 20.815	10:50	14:50	<i>C. gracilis</i>	87	F	Shrimp trap
WWS-2	47 34.102	122 20.815	10:50	14:50	<i>C. gracilis</i>	108	M	Shrimp trap
WWS-2	47 34.102	122 20.815	10:50	14:50	<i>C. gracilis</i>	97	M	Shrimp trap
WWS-2	47 34.102	122 20.815	10:50	14:50	<i>C. gracilis</i>	104	M	Shrimp trap
WWS-2	47 34.102	122 20.815	10:50	14:50	<i>C. gracilis</i>	101	M	Shrimp trap
WWS-2	47 34.102	122 20.815	10:50	14:50	<i>C. gracilis</i>	98	M	Shrimp trap
WWS-2	47 34.102	122 20.815	10:50	14:50	<i>C. gracilis</i>	98	M	Shrimp trap
WWS-2	47 34.102	122 20.815	10:50	14:50	<i>C. gracilis</i>	98	M	Shrimp trap
WWS-2	47 34.102	122 20.815	10:50	14:50	<i>C. gracilis</i>	82	F	Shrimp trap
WWS-2	47 34.102	122 20.815	10:50	14:50	<i>C. gracilis</i>	91	M	Shrimp trap
WWS-2	47 34.102	122 20.815	10:50	14:50	<i>C. gracilis</i>	89	M	Shrimp trap
WWS-2	47 34.102	122 20.815	10:50	14:50	<i>C. gracilis</i>	86	M	Shrimp trap
WWS-2	47 34.102	122 20.815	10:50	14:50	<i>C. gracilis</i>	94	M	Shrimp trap
WWS-2	47 34.102	122 20.815	10:50	14:50	<i>C. gracilis</i>	86	M	Shrimp trap
WWS-3	47 34.028	122 20.923	10:56	15:00	<i>C. gracilis</i>	107	M	Crab trap
WWS-3	47 34.028	122 20.923	10:56	15:00	<i>C. gracilis</i>	95	M	Crab trap
WWS-3	47 34.028	122 20.923	10:56	15:00	<i>C. gracilis</i>	105	M	Crab trap

SAMPLE #	LOCATION		DEPL. TIME	RETR. TIME	SPECIES	LENGTH (MM)	SEX	COMMENTS
	LATITUDE	LONGITUDE						
WWS-3	47 34.028	122 20.923	10:56	15:00	<i>C. magister</i>	155	M	Crab trap
WWS-3	47 34.028	122 20.923	10:56	15:00	<i>C. magister</i>	136	M	Crab trap
WWS-3	47 34.028	122 20.923	10:56	15:00	<i>C. magister</i>	130	M	Crab trap
WWS-3	47 34.028	122 20.923	10:56	15:00	<i>C. productus</i>	152	M	Crab trap
WWS-3	47 34.028	122 20.923	10:56	15:00	<i>C. productus</i>	147	M	Crab trap
WWS-3	47 34.028	122 20.923	10:56	15:15	<i>C. gracilis</i>	74	F	Shrimp trap
WWS-3	47 34.028	122 20.923	10:56	15:15	<i>C. gracilis</i>	82	M	Shrimp trap
WWS-3	47 34.028	122 20.923	10:56	15:15	<i>C. gracilis</i>	92	M	Shrimp trap
WWS-3	47 34.028	122 20.923	10:56	15:15	<i>C. gracilis</i>	88	M	Shrimp trap
WWS-3	47 34.028	122 20.923	10:56	15:15	<i>C. gracilis</i>	96	M	Shrimp trap
WWS-4	47 33.964	122 20.818	11:11	15:20	<i>C. gracilis</i>	77	F	Crab trap
WWS-4	47 33.964	122 20.818	11:11	15:20	<i>C. gracilis</i>	100	M	Crab trap
WWS-4	47 33.964	122 20.818	11:11	15:20	<i>C. gracilis</i>	97	M	Crab trap
WWS-4	47 33.964	122 20.818	11:11	15:20	<i>C. gracilis</i>	133	M	Crab trap
WWS-4	47 33.964	122 20.818	11:11	15:20	<i>C. gracilis</i>	104	M	Crab trap
WWS-4	47 33.964	122 20.818	11:11	15:20	<i>C. gracilis</i>	98	M	Crab trap
WWS-4	47 33.964	122 20.818	11:11	15:20	<i>C. gracilis</i>	95	M	Crab trap
WWS-4	47 33.964	122 20.818	11:11	15:20	<i>C. gracilis</i>	97	M	Crab trap
WWS-4	47 33.964	122 20.818	11:11	15:20	<i>C. gracilis</i>	90	M	Crab trap
WWS-4	47 33.964	122 20.818	11:11	15:20	<i>C. gracilis</i>	115	M	Crab trap
WWS-4	47 33.964	122 20.818	11:11	15:20	<i>C. gracilis</i>	95	M	Crab trap
WWS-4	47 33.964	122 20.818	11:11	15:20	<i>C. magister</i>	172	M	Crab trap
WWS-4	47 33.964	122 20.818	11:11	15:20	<i>C. magister</i>	139	M	Crab trap
WWS-4	47 33.964	122 20.818	11:11	15:20	<i>C. magister</i>	146	M	Crab trap
WWS-4	47 33.964	122 20.818	11:11	15:20	<i>C. magister</i>	167	M	Crab trap
WWS-4	47 33.964	122 20.818	11:11	15:20	<i>C. magister</i>	137	M	Crab trap
WWS-4	47 33.964	122 20.818	11:11	15:20	<i>C. magister</i>	128	M	Crab trap
WWS-4	47 33.964	122 20.818	11:11	15:20	<i>C. magister</i>	154	M	Crab trap
WWS-4	47 33.964	122 20.818	11:11	15:20	<i>C. magister</i>	157	M	Crab trap
WWS-4	47 33.964	122 20.818	11:11	15:20	<i>C. magister</i>	170	M	Crab trap
WWS-4	47 33.964	122 20.818	11:11	15:20	<i>C. magister</i>	147	M	Crab trap
WWS-4	47 33.964	122 20.818	11:11	15:20	<i>C. magister</i>	128	M	Crab trap
WWS-4	47 33.964	122 20.818	11:11	15:20	<i>C. magister</i>	137	M	Crab trap
WWS-4	47 33.964	122 20.818	11:11	15:20	<i>C. magister</i>	131	M	Crab trap
WWS-4	47 33.964	122 20.818	11:11	15:20	<i>C. magister</i>	137	M	Crab trap
WWS-4	47 33.964	122 20.818	11:11	15:20	<i>C. magister</i>	136	M	Crab trap
WWS-4	47 33.964	122 20.818	11:11	15:20	<i>C. magister</i>	127	M	Crab trap
WWS-4	47 33.964	122 20.818	11:11	15:20	<i>C. magister</i>	138	M	Crab trap
WWS-4	47 33.964	122 20.818	11:11	15:20	<i>C. magister</i>	135	M	Crab trap
WWS-4	47 33.964	122 20.818	11:11	15:25	Shrimp trap, empty			
WWS-5	47 33.886	122 20.882	11:21	na	Crab trap, lost to vessel traffic, re-deployed 02/17/2004			
WWS-5	47 33.886	122 20.882	11:21	na	Shrimp trap, lost to vessel traffic, re-deployed 02/17/2004			
WWS-6	47 33.808	122 20.788	11:30	15:35	<i>C. gracilis</i>	82	M	Crab trap
WWS-6	47 33.808	122 20.788	11:30	15:35	<i>C. gracilis</i>	98	F	Crab trap
WWS-6	47 33.808	122 20.788	11:30	15:35	<i>C. gracilis</i>	77	F	Crab trap
WWS-6	47 33.808	122 20.788	11:30	15:35	<i>C. gracilis</i>	76	M	Crab trap
WWS-6	47 33.808	122 20.788	11:30	15:35	<i>C. magister</i>	148	M	Crab trap
WWS-6	47 33.808	122 20.788	11:30	15:42	Shrimp trap			

SAMPLE #	LOCATION		DEPL. TIME	RETR. TIME	SPECIES	LENGTH (MM)	SEX	COMMENTS
	LATITUDE	LONGITUDE						
WWS-7	47 33.738	122 20.893	11:40	15:45	<i>C. gracilis</i>	94	M	Crab trap
WWS-7	47 33.738	122 20.893	11:40	15:45	<i>C. gracilis</i>	87	F	Crab trap
WWS-7	47 33.738	122 20.893	11:40	15:45	<i>C. gracilis</i>	94	M	Crab trap
WWS-7	47 33.738	122 20.893	11:40	15:45	<i>C. gracilis</i>	105	M	Crab trap
WWS-7	47 33.738	122 20.893	11:40	15:45	<i>C. gracilis</i>	73	M	Crab trap
WWS-7	47 33.738	122 20.893	11:40	15:45	<i>C. gracilis</i>	106	M	Crab trap
WWS-7	47 33.738	122 20.893	11:40	15:45	<i>C. magister</i>	156	M	Crab trap
WWS-7	47 33.738	122 20.893	11:40	15:45	<i>C. magister</i>	156	M	Crab trap
WWS-7	47 33.738	122 20.893	11:40	15:50	<i>C. gracilis</i>	99	M	Shrimp trap
WWS-7	47 33.738	122 20.893	11:40	15:50	<i>C. gracilis</i>	69	F	Shrimp trap
WWS-8	47 33.713	122 20.756	11:50	15:55	<i>C. gracilis</i>	76	F	Crab trap
WWS-8	47 33.713	122 20.756	11:50	15:55	<i>C. gracilis</i>	78	F	Crab trap, gravid
WWS-8	47 33.713	122 20.756	11:50	15:55	<i>C. gracilis</i>	70	F	Crab trap
WWS-8	47 33.713	122 20.756	11:50	15:55	<i>C. gracilis</i>	81	F	Crab trap, gravid
WWS-8	47 33.713	122 20.756	11:50	15:55	<i>C. gracilis</i>	93	M	Crab trap
WWS-8	47 33.713	122 20.756	11:50	15:55	<i>C. gracilis</i>	92	M	Crab trap
WWS-8	47 33.713	122 20.756	11:50	15:55	<i>C. magister</i>	139	M	Crab trap
WWS-8	47 33.713	122 20.756	11:50	15:55	<i>C. magister</i>	141	M	Crab trap
WWS-8	47 33.713	122 20.756	11:50	15:55	<i>C. magister</i>	155	M	Crab trap
WWS-8	47 33.713	122 20.756	11:50	15:55	<i>C. magister</i>	114	M	Crab trap
WWS-8	47 33.713	122 20.756	11:50	16:00	<i>C. gracilis</i>	88	M	Shrimp trap
WWS-8	47 33.713	122 20.756	11:50	16:00	<i>C. gracilis</i>	95	M	Shrimp trap
WWS-9	47 33.600	122 20.811	12:00	16:08	<i>C. gracilis</i>	94	M	Crab trap
WWS-9	47 33.600	122 20.811	12:00	16:08	<i>C. magister</i>	124	F	Crab trap
WWS-9	47 33.600	122 20.811	12:00	16:08	<i>C. magister</i>	152	M	Crab trap
WWS-9	47 33.600	122 20.811	12:00	16:08	<i>C. magister</i>	141	F	Crab trap
WWS-9	47 33.600	122 20.811	12:00	16:08	<i>C. magister</i>	130	M	Crab trap
WWS-9	47 33.600	122 20.811	12:00	16:08	<i>C. magister</i>	155	M	Crab trap
WWS-9	47 33.600	122 20.811	12:00	16:08	<i>C. magister</i>	110	F	Crab trap
WWS-9	47 33.600	122 20.811	12:00	16:08	<i>C. magister</i>	125	M	Crab trap
WWS-9	47 33.600	122 20.811	12:00	16:08	<i>C. magister</i>	136	M	Crab trap
WWS-9	47 33.600	122 20.811	12:00	16:08	<i>C. magister</i>	140	M	Crab trap
WWS-9	47 33.600	122 20.811	12:00	16:10	Shrimp trap, empty			
WWS-10	47 33.586	122 20.685	12:05	16:20	<i>C. gracilis</i>	Crab trap, fell out of trap during retrieval		
WWS-10	47 33.586	122 20.685	12:05	16:20	<i>C. gracilis</i>	95	M	Crab trap
WWS-10	47 33.586	122 20.685	12:05	16:20	<i>C. gracilis</i>	70	M	Crab trap
WWS-10	47 33.586	122 20.685	12:05	16:20	<i>C. gracilis</i>	88	M	Crab trap
WWS-10	47 33.586	122 20.685	12:05	16:20	<i>C. gracilis</i>	101	M	Crab trap
WWS-10	47 33.586	122 20.685	12:05	16:20	<i>C. magister</i>	145	M	Crab trap
WWS-10	47 33.586	122 20.685	12:05	16:20	<i>C. magister</i>	124	F	Crab trap
WWS-10	47 33.586	122 20.685	12:05	16:20	<i>C. magister</i>	158	M	Crab trap
WWS-10	47 33.586	122 20.685	12:05	16:20	<i>C. gracilis</i>	92	M	Shrimp trap

Table D-2. Third quarterly survey 4-hour soak time results 02/17/2004

Deployment date:	02/17/2004	Retrieval date:	02/17/2004
Higher high tide, ft. MLLW (time):	11.3 (03:59)	Lower high tide, ft. MLLW (time):	10.3 (13:22)
Higher low tide, ft. MLLW (time):	7.8 (08:57)	Lower low tide, ft. MLLW (time):	-1.7 (20:59)
Crew:	Bob Complita, Shannon Pierce, and Maryann Welsch (Windward)		

SAMPLE #	LOCATION		DEPL. TIME	RETR. TIME	SPECIES	LENGTH (MM)	SEX	COMMENTS
	LATITUDE	LONGITUDE						
WWS-1	47 34.135	122 21.041	11:30	15:40	Sunflower star			Shrimp trap, redeployed due to trap loss on 02/16/2004
WWS-5	47 33.883	122 20.882	11:38	15:45	<i>C. gracilis</i>	96	M	Crab trap, redeployed due to trap loss on 02/16/04, trap soaked approximately 2 hrs at 47 33.883 / 122 20.882, moved per ACOE request to 47 33.875 / 122 20.912 and allowed to soak for approximately 2 more hours (to complete the required 4-hr soak time).
WWS-5	47 33.875	122 20.912	11:38	15:45	<i>C. gracilis</i>	104	M	Crab trap
WWS-5	47 33.875	122 20.912	11:38	15:45	<i>C. gracilis</i>	78	F	Crab trap
WWS-5	47 33.875	122 20.912	11:38	15:45	<i>C. gracilis</i>	79	F	Crab trap, gravid
WWS-5	47 33.875	122 20.912	11:38	15:45	<i>C. gracilis</i>	78	F	Crab trap
WWS-5	47 33.875	122 20.912	11:38	15:45	<i>C. gracilis</i>	94	M	Crab trap
WWS-5	47 33.875	122 20.912	11:38	15:45	<i>C. gracilis</i>	90	M	Crab trap
WWS-5	47 33.875	122 20.912	11:38	15:45	<i>C. gracilis</i>	87	M	Crab trap
WWS-5	47 33.875	122 20.912	11:38	15:45	<i>C. gracilis</i>	64	M	Crab trap
WWS-5	47 33.875	122 20.912	11:38	15:45	<i>C. gracilis</i>	70	F	Crab trap

SAMPLE #	LOCATION		DEPL. TIME	RETR. TIME	SPECIES	LENGTH (MM)	SEX	COMMENTS
	LATITUDE	LONGITUDE						
WWS-5	47 33.875	122 20.912	11:38	15:45	<i>C. gracilis</i>	63	F	Shrimp trap, redeployed due to trap loss on 021604, trap soaked approximately 2 hrs at 47 33.883 / 122 20.882, moved per ACOE request to 47 33.875 / 122 20.912 and allowed to soak for approximately 2 more hours (to complete the required 4-hr soak time).
WWS-5	47 33.875	122 20.912	11:38	15:45	<i>P. danae</i>	81		Shrimp trap
WWS-5	47 33.875	122 20.912	11:38	15:45	<i>P. danae</i>	69		Shrimp trap
WWS-5	47 33.875	122 20.912	11:38	15:45	<i>P. danae</i>	73		Shrimp trap
WWS-11	47 33.505	122 20.706	11:50	16:00	<i>C. gracilis</i>	98	M	Crab trap
WWS-11	47 33.505	122 20.706	11:50	16:00	<i>C. gracilis</i>	88	M	Crab trap
WWS-11	47 33.505	122 20.706	11:50	16:00	<i>C. gracilis</i>	110	M	Crab trap
WWS-11	47 33.505	122 20.706	11:50	16:00	<i>C. gracilis</i>	63	F	Crab trap
WWS-11	47 33.505	122 20.706	11:50	16:00	<i>C. gracilis</i>	73	F	Crab trap
WWS-11	47 33.505	122 20.706	11:50	16:00	<i>C. gracilis</i>	73	F	Crab trap
WWS-11	47 33.505	122 20.706	11:50	16:00	<i>C. gracilis</i>	68	F	Crab trap, gravid
WWS-11	47 33.505	122 20.706	11:50	16:00	<i>C. magister</i>	132	M	Crab trap
WWS-11	47 33.505	122 20.706	11:50	16:00	<i>C. gracilis</i>	108	M	Shrimp trap
WWS-11	47 33.505	122 20.706	11:50	16:00	<i>C. gracilis</i>	93	M	Shrimp trap
WWS-11	47 33.505	122 20.706	11:50	16:00	<i>C. gracilis</i>	75	F	Shrimp trap
WWS-11	47 33.505	122 20.706	11:50	16:00	<i>C. gracilis</i>	68	F	Shrimp trap
WWS-11	47 33.505	122 20.706	11:50	16:00	<i>C. gracilis</i>	69	F	Shrimp trap
WWS-11	47 33.505	122 20.706	11:50	16:00	<i>C. gracilis</i>	68	F	Shrimp trap
WWS-11	47 33.505	122 20.706	11:50	16:00	<i>C. gracilis</i>	67	F	Shrimp trap
WWS-12	47 33.394	122 20.455	11:57	16:13	<i>C. gracilis</i>		F	Crab trap, fell out of trap during retrieval
WWS-12	47 33.394	122 20.455	11:57	16:13	<i>C. gracilis</i>	83	M	Crab trap
WWS-12	47 33.394	122 20.455	11:57	16:13	<i>C. gracilis</i>	101	M	Crab trap
WWS-12	47 33.394	122 20.455	11:57	16:13	<i>C. gracilis</i>	86	M	Crab trap
WWS-12	47 33.394	122 20.455	11:57	16:13	<i>C. gracilis</i>	98	M	Crab trap
WWS-12	47 33.394	122 20.455	11:57	16:13	<i>C. gracilis</i>	72	M	Crab trap
WWS-12	47 33.394	122 20.455	11:57	16:13	<i>C. gracilis</i>	69	F	Crab trap, gravid
WWS-12	47 33.394	122 20.455	11:57	16:13	<i>C. gracilis</i>	87	M	Crab trap
WWS-12	47 33.394	122 20.455	11:57	16:13	<i>C. gracilis</i>	95	M	Crab trap

SAMPLE #	LOCATION		DEPL. TIME	RETR. TIME	SPECIES	LENGTH (MM)	SEX	COMMENTS
	LATITUDE	LONGITUDE						
WWS-12	47 33.394	122 20.455	11:57	16:13	<i>C. gracilis</i>	96	M	Crab trap
WWS-12	47 33.394	122 20.455	11:57	16:13	<i>C. gracilis</i>	82	M	Crab trap
WWS-12	47 33.394	122 20.455	11:57	16:13	<i>C. gracilis</i>	77	F	Crab trap
WWS-12	47 33.394	122 20.455	11:57	16:13	<i>C. gracilis</i>	86	M	Crab trap
WWS-12	47 33.394	122 20.455	11:57	16:13	<i>C. gracilis</i>	85	M	Crab trap
WWS-12	47 33.394	122 20.455	11:57	16:13	<i>C. gracilis</i>	80	M	Crab trap
WWS-12	47 33.394	122 20.455	11:57	16:13	<i>C. gracilis</i>	69	M	Crab trap
WWS-12	47 33.394	122 20.455	11:57	16:16	<i>C. gracilis</i>	85	M	Shrimp trap
WWS-12	47 33.394	122 20.455	11:57	16:16	<i>C. gracilis</i>	93	M	Shrimp trap
WWS-12	47 33.394	122 20.455	11:57	16:16	<i>C. gracilis</i>	84	M	Shrimp trap
WWS-12	47 33.394	122 20.455	11:57	16:16	<i>C. gracilis</i>	87	M	Shrimp trap
WWS-12	47 33.394	122 20.455	11:57	16:16	<i>C. gracilis</i>	60	F	Shrimp trap
WWS-13	47 33.365	122 20.606	12:05	16:27	<i>C. gracilis</i>	99	M	Crab trap
WWS-13	47 33.365	122 20.606	12:05	16:27	<i>C. gracilis</i>	70	F	Crab trap, gravid
WWS-13	47 33.365	122 20.606	12:05	16:27	<i>C. gracilis</i>	89	M	Crab trap
WWS-13	47 33.365	122 20.606	12:05	16:27	<i>C. gracilis</i>	82	F	Crab trap
WWS-13	47 33.365	122 20.606	12:05	16:27	<i>C. gracilis</i>	85	M	Crab trap
WWS-13	47 33.365	122 20.606	12:05	16:27	<i>C. gracilis</i>	65	F	Crab trap, gravid
WWS-13	47 33.365	122 20.606	12:05	16:27	<i>C. gracilis</i>	78	F	Crab trap
WWS-13	47 33.365	122 20.606	12:05	16:27	<i>C. gracilis</i>	70	F	Crab trap, gravid
WWS-13	47 33.365	122 20.606	12:05	16:27	<i>C. gracilis</i>	73	F	Crab trap, gravid
WWS-13	47 33.365	122 20.606	12:05	16:27	<i>C. gracilis</i>	63	M	Crab trap
WWS-13	47 33.365	122 20.606	12:05	16:27	<i>C. gracilis</i>	69	M	Crab trap
WWS-13	47 33.365	122 20.606	12:05	16:27	<i>C. gracilis</i>	67	M	Crab trap
WWS-13	47 33.365	122 20.606	12:05	16:27	<i>C. magister</i>	155	M	Crab trap
WWS-13	47 33.365	122 20.606	12:05	16:28	<i>C. gracilis</i>	74	F	Shrimp trap, gravid
WWS-13	47 33.365	122 20.606	12:05	16:28	<i>C. gracilis</i>	89	M	Shrimp trap
WWS-13	47 33.365	122 20.606	12:05	16:28	<i>C. gracilis</i>	61	F	Shrimp trap
WWS-13	47 33.365	122 20.606	12:05	16:28	<i>C. gracilis</i>	74	F	Shrimp trap
WWS-14	47 33.333	122 20.786	12:09	16:37	<i>C. gracilis</i>		F	Crab trap, fell out of trap during retrieval
WWS-14	47 33.333	122 20.786	12:09	16:37	<i>C. gracilis</i>		F	Crab trap, fell out of trap during retrieval
WWS-14	47 33.333	122 20.786	12:09	16:37	<i>C. gracilis</i>		M	Crab trap, fell out of trap during retrieval
WWS-14	47 33.333	122 20.786	12:09	16:37	<i>C. gracilis</i>	75	M	Crab trap
WWS-14	47 33.333	122 20.786	12:09	16:37	<i>C. gracilis</i>	63	M	Crab trap
WWS-14	47 33.333	122 20.786	12:09	16:37	<i>C. gracilis</i>	72	M	Crab trap
WWS-14	47 33.333	122 20.786	12:09	16:37	<i>C. gracilis</i>	88	M	Crab trap
WWS-14	47 33.333	122 20.786	12:09	16:37	<i>C. gracilis</i>	77	M	Crab trap
WWS-14	47 33.333	122 20.786	12:09	16:37	<i>C. gracilis</i>	94	M	Crab trap
WWS-14	47 33.333	122 20.786	12:09	16:37	<i>C. gracilis</i>	81	M	Crab trap

SAMPLE #	LOCATION		DEPL. TIME	RETR. TIME	SPECIES	LENGTH (MM)	SEX	COMMENTS
	LATITUDE	LONGITUDE						
WWS-14	47 33.333	122 20.786	12:09	16:37	<i>C. gracilis</i>	74	M	Crab trap
WWS-14	47 33.333	122 20.786	12:09	16:37	<i>C. gracilis</i>	83	M	Crab trap
WWS-14	47 33.333	122 20.786	12:09	16:37	<i>C. gracilis</i>	67	M	Crab trap
WWS-14	47 33.333	122 20.786	12:09	16:37	<i>C. gracilis</i>	83	M	Shrimp trap
WWS-14	47 33.333	122 20.786	12:09	16:37	<i>C. gracilis</i>	83	M	Shrimp trap
WWS-14	47 33.333	122 20.786	12:09	16:37	<i>C. gracilis</i>	88	M	Shrimp trap
WWS-14	47 33.333	122 20.786	12:09	16:37	<i>C. gracilis</i>	67	M	Shrimp trap
WWS-14	47 33.333	122 20.786	12:09	16:37	<i>C. gracilis</i>	86	M	Shrimp trap
WWS-14	47 33.333	122 20.786	12:09	16:37	<i>C. gracilis</i>	73	M	Shrimp trap
WWS-14	47 33.333	122 20.786	12:09	16:37	<i>C. gracilis</i>	77	M	Shrimp trap
WWS-14	47 33.333	122 20.786	12:09	16:37	<i>C. gracilis</i>	92	M	Shrimp trap
WWS-14	47 33.333	122 20.786	12:09	16:37	<i>C. gracilis</i>	70	F	Shrimp trap
WWS-14	47 33.333	122 20.786	12:09	16:37	<i>C. gracilis</i>	74	F	Shrimp trap
WWS-14	47 33.333	122 20.786	12:09	16:37	<i>C. gracilis</i>	58	F	Shrimp trap
WWS-15	47 33.235	122 20.516	12:15	16:49	<i>C. gracilis</i>	101	M	Crab trap
WWS-15	47 33.235	122 20.516	12:15	16:49	<i>C. gracilis</i>	95	M	Crab trap
WWS-15	47 33.235	122 20.516	12:15	16:49	<i>C. gracilis</i>	92	M	Crab trap
WWS-15	47 33.235	122 20.516	12:15	16:49	<i>C. gracilis</i>	95	M	Crab trap
WWS-15	47 33.235	122 20.516	12:15	16:49	<i>C. gracilis</i>	99	M	Crab trap
WWS-15	47 33.235	122 20.516	12:15	16:49	<i>C. gracilis</i>	94	M	Crab trap
WWS-15	47 33.235	122 20.516	12:15	16:49	<i>C. gracilis</i>	99	M	Crab trap
WWS-15	47 33.235	122 20.516	12:15	16:49	<i>C. gracilis</i>	67	M	Crab trap
WWS-15	47 33.235	122 20.516	12:15	16:49	<i>C. gracilis</i>	76	F	Crab trap
WWS-15	47 33.235	122 20.516	12:15	16:49	<i>C. gracilis</i>	78	M	Crab trap
WWS-15	47 33.235	122 20.516	12:15	16:49	<i>C. magister</i>	145	M	Crab trap
WWS-15	47 33.235	122 20.516	12:15	16:51	<i>C. gracilis</i>	64	F	Shrimp trap
WWS-16	47 33.119	122 20.424	12:22	17:01	<i>C. gracilis</i>	98	M	Crab trap
WWS-16	47 33.119	122 20.424	12:22	17:01	<i>C. gracilis</i>	101	M	Crab trap
WWS-16	47 33.119	122 20.424	12:22	17:01	<i>C. gracilis</i>	79	F	Crab trap
WWS-16	47 33.119	122 20.424	12:22	17:01	<i>C. gracilis</i>	76	M	Crab trap
WWS-16	47 33.119	122 20.424	12:22	17:01	<i>C. gracilis</i>	93	M	Crab trap
WWS-16	47 33.119	122 20.424	12:22	17:01	<i>C. gracilis</i>	103	M	Crab trap
WWS-16	47 33.119	122 20.424	12:22	17:01	<i>C. gracilis</i>	104	M	Crab trap
WWS-16	47 33.119	122 20.424	12:22	17:01	<i>C. gracilis</i>	92	M	Crab trap
WWS-16	47 33.119	122 20.424	12:22	17:01	<i>C. gracilis</i>	87	M	Crab trap
WWS-16	47 33.119	122 20.424	12:22	17:01	<i>C. gracilis</i>	79	M	Crab trap
WWS-16	47 33.119	122 20.424	12:22	17:01	<i>C. gracilis</i>	71	F	Crab trap
WWS-16	47 33.119	122 20.424	12:22	17:01	<i>C. gracilis</i>	79	F	Crab trap
WWS-16	47 33.119	122 20.424	12:22	17:01	<i>C. gracilis</i>	74	F	Crab trap
WWS-16	47 33.119	122 20.424	12:22	16:57	<i>C. gracilis</i>	85	M	Shrimp trap
WWS-16	47 33.119	122 20.424	12:22	16:57	<i>C. gracilis</i>	108	M	Shrimp trap
WWS-16	47 33.119	122 20.424	12:22	16:57	<i>C. gracilis</i>	95	M	Shrimp trap
WWS-16	47 33.119	122 20.424	12:22	16:57	<i>C. gracilis</i>	96	M	Shrimp trap
WWS-16	47 33.119	122 20.424	12:22	16:57	<i>C. gracilis</i>	94	M	Shrimp trap
WWS-16	47 33.119	122 20.424	12:22	16:57	<i>C. gracilis</i>	78	F	Shrimp trap
WWS-16	47 33.119	122 20.424	12:22	16:57	<i>C. gracilis</i>	Shrimp trap, fell out of trap during retrieval		
WWS-17	47 32.997	122 20.424	12:32	17:15	<i>C. gracilis</i>	90	M	Crab trap
WWS-17	47 32.997	122 20.424	12:32	17:15	<i>C. gracilis</i>	92	M	Crab trap
WWS-17	47 32.997	122 20.424	12:32	17:15	<i>C. gracilis</i>	91	M	Crab trap

SAMPLE #	LOCATION		DEPL. TIME	RETR. TIME	SPECIES	LENGTH (MM)	SEX	COMMENTS
	LATITUDE	LONGITUDE						
WWS-17	47 32.997	122 20.424	12:32	17:15	<i>C. gracilis</i>	101	M	Crab trap
WWS-17	47 32.997	122 20.424	12:32	17:15	<i>C. gracilis</i>	96	M	Crab trap
WWS-17	47 32.997	122 20.424	12:32	17:15	<i>C. gracilis</i>	100	M	Crab trap
WWS-17	47 32.997	122 20.424	12:32	17:15	<i>C. gracilis</i>	90	M	Crab trap
WWS-17	47 32.997	122 20.424	12:32	17:15	<i>C. gracilis</i>	73	F	Crab trap
WWS-17	47 32.997	122 20.424	12:32	17:15	<i>C. magister</i>	137	F	Crab trap
WWS-17	47 32.997	122 20.424	12:32	17:11	<i>C. gracilis</i>	101	M	Shrimp trap
WWS-18	47 32.905	122 20.334	12:39	17:27	<i>C. gracilis</i>	99	M	Crab trap
WWS-18	47 32.905	122 20.334	12:39	17:27	<i>C. gracilis</i>	91	M	Crab trap
WWS-18	47 32.905	122 20.334	12:39	17:27	<i>C. gracilis</i>	77	M	Crab trap
WWS-18	47 32.905	122 20.334	12:39	17:27	<i>C. gracilis</i>	90	M	Crab trap
WWS-18	47 32.905	122 20.334	12:39	17:27	<i>C. gracilis</i>	101	M	Crab trap
WWS-18	47 32.905	122 20.334	12:39	17:27	<i>C. gracilis</i>	79	F	Crab trap, gravid
WWS-18	47 32.905	122 20.334	12:39	17:27	<i>C. gracilis</i>	89	M	Crab trap
WWS-18	47 32.905	122 20.334	12:39	17:27	<i>C. gracilis</i>	94	M	Crab trap
WWS-18	47 32.905	122 20.334	12:39	17:27	<i>C. gracilis</i>	80	F	Crab trap
WWS-18	47 32.905	122 20.334	12:39	17:27	<i>C. gracilis</i>	108	M	Crab trap
WWS-18	47 32.905	122 20.334	12:39	17:27	<i>C. gracilis</i>	98	M	Crab trap
WWS-18	47 32.905	122 20.334	12:39	17:27	<i>C. gracilis</i>	64	F	Crab trap
WWS-18	47 32.905	122 20.334	12:39	17:27	<i>C. gracilis</i>	61	F	Crab trap, gravid
WWS-18	47 32.905	122 20.334	12:39	17:27	<i>C. magister</i>	108	M	Crab trap
WWS-18	47 32.905	122 20.334	12:39	17:27	<i>C. magister</i>	93	M	Crab trap
WWS-18	47 32.905	122 20.334	12:39	17:20	<i>C. gracilis</i>	91	M	Shrimp trap
WWS-18	47 32.905	122 20.334	12:39	17:20	<i>C. gracilis</i>	88	M	Shrimp trap
WWS-18	47 32.905	122 20.334	12:39	17:20	<i>C. gracilis</i>	75	F	Shrimp trap
WWS-19	47 32.789	122 20.324	12:45	17:36	<i>C. gracilis</i>	94	M	Crab trap
WWS-19	47 32.789	122 20.324	12:45	17:36	<i>C. gracilis</i>	78	M	Crab trap
WWS-19	47 32.789	122 20.324	12:45	17:36	<i>C. gracilis</i>	98	M	Crab trap
WWS-19	47 32.789	122 20.324	12:45	17:36	<i>C. gracilis</i>	93	M	Crab trap
WWS-19	47 32.789	122 20.324	12:45	17:36	<i>C. gracilis</i>	91	M	Crab trap
WWS-19	47 32.789	122 20.324	12:45	17:36	<i>C. gracilis</i>	101	M	Crab trap
WWS-19	47 32.789	122 20.324	12:45	17:36	<i>C. gracilis</i>	87	F	Crab trap
WWS-19	47 32.789	122 20.324	12:45	17:36	<i>C. gracilis</i>	90	M	Crab trap
WWS-19	47 32.789	122 20.324	12:45	17:36	<i>C. gracilis</i>	84	F	Crab trap
WWS-19	47 32.789	122 20.324	12:45	17:36	<i>C. gracilis</i>	79	F	Crab trap
WWS-19	47 32.789	122 20.324	12:45	17:36	<i>C. gracilis</i>	66	F	Crab trap
WWS-19	47 32.789	122 20.324	12:45	17:36	<i>C. gracilis</i>	92	M	Crab trap
WWS-19	47 32.789	122 20.324	12:45	17:36	<i>C. gracilis</i>	97	M	Crab trap
WWS-19	47 32.789	122 20.324	12:45	17:36	<i>C. gracilis</i>	90	M	Crab trap
WWS-19	47 32.789	122 20.324	12:45	17:36	<i>C. gracilis</i>	95	M	Crab trap
WWS-19	47 32.789	122 20.324	12:45	17:36	<i>C. gracilis</i>	93	M	Crab trap
WWS-19	47 32.789	122 20.324	12:45	17:36	<i>C. gracilis</i>	99	M	Crab trap
WWS-19	47 32.789	122 20.324	12:45	17:36	<i>C. gracilis</i>	103	M	Crab trap
WWS-19	47 32.789	122 20.324	12:45	17:36	<i>C. gracilis</i>	95	M	Crab trap
WWS-19	47 32.789	122 20.324	12:45	17:36	<i>C. gracilis</i>	102	M	Crab trap
WWS-19	47 32.789	122 20.324	12:45	17:36	<i>C. gracilis</i>	96	M	Crab trap
WWS-19	47 32.789	122 20.324	12:45	17:36	<i>C. gracilis</i>	91	M	Crab trap
WWS-19	47 32.789	122 20.324	12:45	17:36	<i>C. gracilis</i>	100	M	Crab trap

SAMPLE #	LOCATION		DEPL. TIME	RETR. TIME	SPECIES	LENGTH (MM)	SEX	COMMENTS
	LATITUDE	LONGITUDE						
WWS-19	47 32.789	122 20.324	12:45	17:36	<i>C. gracilis</i>	97	M	Crab trap
WWS-19	47 32.789	122 20.324	12:45	17:36	<i>C. gracilis</i>	98	M	Crab trap
WWS-19	47 32.789	122 20.324	12:45	17:36	<i>C. gracilis</i>	101	M	Crab trap
WWS-19	47 32.789	122 20.324	12:45	17:36	<i>C. gracilis</i>	94	M	Crab trap
WWS-19	47 32.789	122 20.324	12:45	17:32	<i>C. gracilis</i>	89	F	Shrimp trap
WWS-19	47 32.789	122 20.324	12:45	17:32	<i>C. gracilis</i>	98	M	Shrimp trap

Table D-3. Third quarterly survey 4-hour soak time results 02/18/2004

Deployment date:	02/18/2004	Retrieval date:	02/18/2004
Higher high tide, ft. MLLW (time):	11.9 (04:42)	Lower high tide, ft. MLLW (time):	10.3 (15:33)
Higher low tide, ft. MLLW (time):	7.1 (09:55)	Lower low tide, ft. MLLW (time):	-1.8 (21:50)
Crew:	Bob Complita, Thai Do, and Joanna Florer (Windward)		

SAMPLE #	LOCATION		DEPL. TIME	RETR. TIME	SPECIES	LENGTH (MM)	SEX	COMMENTS
	LATITUDE	LONGITUDE						
WWS-20	47 32.780	122 20.168	12:45	16:47	<i>C. gracilis</i>	76	F	Crab trap
WWS-20	47 32.780	122 20.168	12:45	16:47	<i>C. gracilis</i>	102	M	Crab trap
WWS-20	47 32.780	122 20.168	12:45	16:47	<i>C. gracilis</i>	99	M	Crab trap
WWS-20	47 32.780	122 20.168	12:45	16:47	<i>C. gracilis</i>	101	M	Crab trap
WWS-20	47 32.780	122 20.168	12:45	16:47	<i>C. gracilis</i>	88	M	Crab trap
WWS-20	47 32.780	122 20.168	12:45	16:47	<i>C. gracilis</i>	99	M	Crab trap
WWS-20	47 32.780	122 20.168	12:45	16:47	<i>C. gracilis</i>	99	M	Crab trap
WWS-20	47 32.780	122 20.168	12:45	16:47	<i>C. gracilis</i>	76	M	Crab trap
WWS-20	47 32.780	122 20.168	12:45	16:47	<i>C. gracilis</i>	100	M	Crab trap
WWS-20	47 32.780	122 20.168	12:45	16:47	<i>C. gracilis</i>	91	M	Crab trap
WWS-20	47 32.780	122 20.168	12:45	16:47	<i>C. gracilis</i>	81	M	Crab trap
WWS-20	47 32.780	122 20.168	12:45	16:47	<i>C. gracilis</i>	93	M	Crab trap
WWS-20	47 32.780	122 20.168	12:45	16:49	<i>C. gracilis</i>	85	M	Shrimp trap
WWS-20	47 32.780	122 20.168	12:45	16:49	<i>C. gracilis</i>	83	M	Shrimp trap
WWS-20	47 32.780	122 20.168	12:45	16:49	<i>C. gracilis</i>	85	M	Shrimp trap
WWS-21	47 32.657	122 20.219	12:55	16:59	<i>C. gracilis</i>	Crab trap, fell out of trap during retrieval		
WWS-21	47 32.657	122 20.219	12:55	16:59	<i>C. gracilis</i>	Crab trap, fell out of trap during retrieval		
WWS-21	47 32.657	122 20.219	12:55	16:59	<i>C. gracilis</i>	97	M	Crab trap
WWS-21	47 32.657	122 20.219	12:55	16:59	<i>C. gracilis</i>	92	M	Crab trap
WWS-21	47 32.657	122 20.219	12:55	16:59	<i>C. gracilis</i>	79	F	Crab trap
WWS-21	47 32.657	122 20.219	12:55	16:59	<i>C. gracilis</i>	76	M	Crab trap
WWS-21	47 32.657	122 20.219	12:55	16:59	<i>C. gracilis</i>	86	M	Crab trap
WWS-21	47 32.657	122 20.219	12:55	16:59	<i>C. gracilis</i>	91	M	Crab trap
WWS-21	47 32.657	122 20.219	12:55	16:59	<i>C. gracilis</i>	94	M	Crab trap
WWS-21	47 32.657	122 20.219	12:55	16:59	<i>C. gracilis</i>	86	M	Crab trap
WWS-21	47 32.657	122 20.219	12:55	16:59	<i>C. gracilis</i>	87	M	Crab trap
WWS-21	47 32.657	122 20.219	12:55	16:59	<i>C. gracilis</i>	90	M	Crab trap
WWS-21	47 32.657	122 20.219	12:55	16:59	<i>C. gracilis</i>	85	M	Crab trap
WWS-21	47 32.657	122 20.219	12:55	16:59	<i>C. gracilis</i>	77	F	Crab trap
WWS-21	47 32.657	122 20.219	12:55	16:59	<i>C. gracilis</i>	66	F	Crab trap, gravid
WWS-21	47 32.657	122 20.219	12:55	17:02	<i>C. gracilis</i>	92	M	Shrimp trap
WWS-21	47 32.657	122 20.219	12:55	17:02	<i>C. gracilis</i>	76	M	Shrimp trap
WWS-21	47 32.657	122 20.219	12:55	17:02	<i>C. gracilis</i>	79	F	Shrimp trap, gravid
WWS-21	47 32.657	122 20.219	12:55	17:02	<i>C. gracilis</i>	67	F	Shrimp trap
WWS-22	47 32.563	122 19.892	13:07	17:20	<i>C. gracilis</i>	97	M	Crab trap
WWS-22	47 32.563	122 19.892	13:07	17:20	<i>C. gracilis</i>	72	M	Crab trap
WWS-22	47 32.563	122 19.892	13:07	17:20	<i>C. gracilis</i>	60	M	Crab trap

SAMPLE #	LOCATION		DEPL. TIME	RETR. TIME	SPECIES	LENGTH (MM)	SEX	COMMENTS
	LATITUDE	LONGITUDE						
WWS-22	47 32.563	122 19.892	13:07	17:20	<i>C. gracilis</i>	55	M	Crab trap
WWS-22	47 32.563	122 19.892	13:07	17:20	<i>C. gracilis</i>	98	M	Shrimp trap
WWS-22	47 32.563	122 19.892	13:07	17:20	Shiner surfperch	25 - 50		Shrimp trap
WWS-23	47 32.542	122 20.120	13:00	17:09	<i>C. gracilis</i>	Crab trap, fell out of trap during retrieval		
WWS-23	47 32.542	122 20.120	13:00	17:09	<i>C. gracilis</i>	Crab trap, fell out of trap during retrieval		
WWS-23	47 32.542	122 20.120	13:00	17:09	<i>C. gracilis</i>	91	M	Crab trap
WWS-23	47 32.542	122 20.120	13:00	17:09	<i>C. gracilis</i>	80	F	Crab trap
WWS-23	47 32.542	122 20.120	13:00	17:09	<i>C. gracilis</i>	95	M	Crab trap
WWS-23	47 32.542	122 20.120	13:00	17:09	<i>C. gracilis</i>	80	M	Crab trap
WWS-23	47 32.542	122 20.120	13:00	17:09	<i>C. gracilis</i>	79	M	Crab trap
WWS-23	47 32.542	122 20.120	13:00	17:09	<i>C. gracilis</i>	71	F	Crab trap
WWS-23	47 32.542	122 20.120	13:00	17:09	<i>C. gracilis</i>	68	F	Crab trap
WWS-23	47 32.542	122 20.120	13:00	17:09	<i>C. gracilis</i>	100	M	Crab trap
WWS-23	47 32.542	122 20.120	13:00	17:09	<i>C. gracilis</i>	86	F	Crab trap
WWS-23	47 32.542	122 20.120	13:00	17:09	<i>C. gracilis</i>	72	M	Crab trap
WWS-23	47 32.542	122 20.120	13:00	17:09	<i>C. gracilis</i>	99	M	Crab trap
WWS-23	47 32.542	122 20.120	13:00	17:09	<i>C. gracilis</i>	75	F	Crab trap, gravid
WWS-23	47 32.542	122 20.120	13:00	17:09	<i>C. gracilis</i>	91	M	Shrimp trap
WWS-23	47 32.542	122 20.120	13:00	17:09	<i>C. gracilis</i>	107	M	Shrimp trap
WWS-23	47 32.542	122 20.120	13:00	17:09	<i>C. gracilis</i>	68	F	Shrimp trap, gravid
WWS-24	47 32.424	122 19.941	13:15	17:28	<i>C. gracilis</i>	102	M	Crab trap
WWS-24	47 32.424	122 19.941	13:15	17:28	<i>C. gracilis</i>	86	M	Crab trap
WWS-24	47 32.424	122 19.941	13:15	17:28	<i>C. gracilis</i>	87	M	Crab trap
WWS-24	47 32.424	122 19.941	13:15	17:28	<i>C. gracilis</i>	80	M	Crab trap
WWS-24	47 32.424	122 19.941	13:15	17:28	<i>C. gracilis</i>	71	M	Crab trap
WWS-24	47 32.424	122 19.941	13:15	17:28	<i>C. magister</i>	133	M	Crab trap
WWS-24	47 32.424	122 19.941	13:15	17:28	Shrimp trap, empty			
WWS-25	47 32.354	122 19.719	13:21	17:35	Crab trap, empty			
WWS-25	47 32.354	122 19.719	13:21	17:35	Shrimp trap, empty			
WWS-26	47 32.240	122 19.664	13:28	17:40	<i>C. gracilis</i>	108	M	Crab trap
WWS-26	47 32.240	122 19.664	13:28	17:40	<i>C. gracilis</i>	83	M	Crab trap
WWS-26	47 32.240	122 19.664	13:28	17:40	<i>C. gracilis</i>	81	M	Crab trap
WWS-26	47 32.240	122 19.664	13:28	17:40	<i>C. gracilis</i>	73	M	Crab trap
WWS-26	47 32.240	122 19.664	13:28	17:40	<i>C. gracilis</i>	95	M	Shrimp trap
WWS-26	47 32.240	122 19.664	13:28	17:40	<i>C. gracilis</i>	99	M	Shrimp trap
WWS-26	47 32.240	122 19.664	13:28	17:40	<i>C. gracilis</i>	104	M	Shrimp trap
WWS-26	47 32.240	122 19.664	13:28	17:40	<i>C. gracilis</i>	98	M	Shrimp trap
WWS-26	47 32.240	122 19.664	13:28	17:40	<i>C. gracilis</i>	68	M	Shrimp trap
WWS-26	47 32.240	122 19.664	13:28	17:40	<i>Hemigrapsus sp.</i>	35	M	Shrimp trap
WWS-27	47 32.107	122 19.479	13:40	17:50	<i>C. magister</i>	153	M	Crab trap
WWS-27	47 32.107	122 19.479	13:40	17:50	Shrimp trap, empty			
WWS-28	47 32.135	122 19.164	13:48	17:56	<i>C. gracilis</i>	69	F	Crab trap
WWS-28	47 32.135	122 19.164	13:48	17:56	Shrimp trap, empty			
WWS-29	47 32.046	122 19.315	14:00	18:02	<i>C. magister</i>	147	M	Crab trap

SAMPLE #	LOCATION		DEPL. TIME	RETR. TIME	SPECIES	LENGTH (MM)	SEX	COMMENTS
	LATITUDE	LONGITUDE						
WWS-29	47 32.046	122 19.315	14:00	18:02	<i>C. magister</i>	131	F	Crab trap
WWS-29	47 32.046	122 19.315	14:00	18:02	<i>C. magister</i>	137	M	Crab trap
WWS-29	47 32.046	122 19.315	14:00	18:02	Shrimp trap, empty			

Table D-4. Third quarterly survey 4-hour soak time results 02/19/2004

Deployment date:	02/19/2004	Retrieval date:	02/19/2004
Higher high tide, ft. MLLW (time):	12.2 (05:18)	Lower high tide, ft. MLLW (time):	10.3 (15:33)
Higher low tide, ft. MLLW (time):	6.3 (10:43)	Lower low tide, ft. MLLW (time):	-1.5 (22:35)
Crew:	Bob Complita, Cindy Jackson, and Derek Pelletier (Windward)		

SAMPLE #	LOCATION		DEPL. TIME	RETR. TIME	SPECIES	LENGTH (MM)	SEX	COMMENTS
	LATITUDE	LONGITUDE						
WWS-30	47 31.937	122 19.186	13:30	17:30	<i>C. magister</i>	154	M	Crab trap
WWS-30	47 31.937	122 19.186	13:30	17:30	Shrimp trap, empty			
WWS-31	47 31.871	122 19.040	13:45	17:36	<i>C. magister</i>	138	M	Crab trap
WWS-31	47 31.871	122 19.040	13:45	17:36	<i>C. magister</i>	142	M	Crab trap
WWS-31	47 31.871	122 19.040	13:45	17:36	<i>C. magister</i>	156	M	Crab trap
WWS-31	47 31.871	122 19.040	13:45	17:36	Shrimp trap, empty			
WWS-32	47 31.713	122 18.773	13:52	17:44	<i>C. magister</i>	142	M	Crab trap
WWS-32	47 31.713	122 18.773	13:52	17:44	<i>C. magister</i>	155	M	Crab trap
WWS-32	47 31.713	122 18.773	13:52	17:44	<i>C. magister</i>	143	M	Crab trap
WWS-32	47 31.713	122 18.773	13:52	17:44	<i>C. magister</i>	155	M	Crab trap
WWS-32	47 31.713	122 18.773	13:52	17:44	<i>C. magister</i>	161	M	Crab trap
WWS-32	47 31.713	122 18.773	13:52	17:44	<i>C. magister</i>	160	M	Crab trap
WWS-32	47 31.713	122 18.773	13:52	17:44	<i>C. magister</i>	150	M	Crab trap
WWS-32	47 31.713	122 18.773	13:52	17:44	Shrimp trap, empty			
WWS-33	47 31.441	122 18.502	14:00	17:55	<i>C. magister</i>	157	M	Crab trap
WWS-33	47 31.441	122 18.502	14:00	17:55	<i>C. magister</i>	156	M	Crab trap
WWS-33	47 31.441	122 18.502	14:00	17:55	<i>C. magister</i>	140	M	Crab trap
WWS-33	47 31.441	122 18.502	14:00	17:55	<i>C. magister</i>	123	M	Crab trap
WWS-33	47 31.441	122 18.502	14:00	17:55	Shrimp trap, empty			
WWS-34	47 31.113	122 18.375	14:10	18:08	Crab trap, empty			
WWS-34	47 31.113	122 18.375	14:10	18:08	Shrimp trap, empty			
WWS-35	47 30.879	122 18.299	14:15	18:15	Crab trap, empty			
WWS-35	47 30.879	122 18.299	14:15	18:15	Shrimp trap, empty			
WWS-36	47 30.742	122 18.186	14:20	18:22	Crab trap, empty			
WWS-36	47 30.742	122 18.186	14:20	18:22	Shrimp trap, empty			
WWS-37	47 30.699	122 17.887	14:27	18:28	Crab trap, empty			
WWS-37	47 30.699	122 17.887	14:27	18:28	Shrimp trap, empty			
WWS-38	47 30.548	122 17.547	14:37	18:37	Crab trap, empty			
WWS-38	47 30.548	122 17.547	14:37	18:37	Shrimp trap, empty			

02/16/04 3rd Quarterly Crab/Shrimp Survey

Crew Bob Compton } windward
 Thini Do }
 Maryam Welsh }

Weather cloudy, cold, rain

Deployment Phase

Station	Type	Time	Waypoint
WWS1	Crab	10:45	01
	Shrimp	10:45	01
WWS2	Crab	10:50	02
	Shrimp	10:50	02
WWS3	Crab	10:56	03
	Shrimp	10:56	03
WWS4	Crab	11:11	04
	Shrimp	11:11	04
WWS5	Crab	11:21	05
	Shrimp	11:21	05
WWS6	Crab	11:30	06
	Shrimp	11:30	06

Deployment Phase Cont.

Station	Type	Time	Waypoint
WWS7	Crab	11:40	07
	Shrimp	11:40	07
WWS8	Crab	11:50	08
	Shrimp	11:50	08
WWS9	Crab	12:00	09
	Shrimp	12:00	09
WWS10	Crab	12:05	10
	Shrimp	12:05	10

Retrieval Phase

Station	Type	Time	Species	Sex	Size (length, mm)
WWS1	C	14:45	SUNSTAR		
			SUNSTAR		
WWS1	S				- lost due to tug

STATION	TYPE	TIME
WWS2	C	14:50
SPECIES	SEX	SIZE
Slender	M	111
Slender	M	98
	M	97
	M	115
	M	106
	M	114
	M	111
	M	103
	M	95
	M	107
	M	103
	M	104
	M	100
	M	117
	M	97
	M	90
	F	85

STATION	TYPE	TIME
WWS2	S	14:50
SPECIES	SEX	SIZE
Slender	M	99
	M	94
	F	87
	M	108
	M	97
	M	104
	M	101
	M	98
	M	98
	M	98
	F	82
	M	91
	M	89
	M	86
	M	94
	M	86

STATION	TYPE	TIME
WWS3	C	1500

<u>SPP</u>	<u>SEX</u>	<u>SIZE</u>
DUNG	M	155
↓	M	136
↓	M	130
Slender	M	107
↓	M	95
↓	M	105
RR	M	152
↓	M	147

STATION	TYPE	TIME
WWS3	S	1515

<u>SPP</u>	<u>SEX</u>	<u>SIZE</u>
Slender	F	74
↓	M	82
↓	M	92
↓	M	88
↓	M	96

<u>Station</u>	<u>TYPE</u>	<u>TIME</u>
WWS4	C	1520

<u>SPP</u>	<u>SEX</u>	<u>SIZE</u>
DUNG	M	172
↓	M	139
↓	M	146
↓	M	107
↓	M	137
↓	M	128
↓	M	154

WWS4 CRAB cont'd

<u>SPP</u>	<u>SEX</u>	<u>SIZE</u>
DUNG	M	157
	M	170
	M	147
	M	128
	M	187
	M	131
	M	137
	M	136
Slender	F	77
	M	100
	M	97
	M	133
DUNG	M	127
DUNG	M	138
DUNG	M	135
Slender	M	104
	M	98
	M	95
	M	97
	M	90
	M	115
	M	95

<u>Station</u>	<u>Type</u>	<u>Time</u>
WWS4	S	15:25

NOTHING! (EMPTY)

~~WWS5 BOTH S+C = MISSING~~

<u>Station</u>	<u>Type</u>	<u>Time</u>
WWS6	C	15:35

<u>SPP</u>	<u>SEX</u>	<u>SIZE</u>
DUNG	M	148
Slender	M	82
	F	98
	F	77
	M	76

<u>Station</u>	<u>Type</u>	<u>Time</u>
WWS6	S	15:42

EMPTY

Recent dredging in area

STATION	TYPE	TIME
WWS 7	C	1545

SPP	SEX	SIZE
DUNG	M	156
↓	M	156
Slender	M	94
↓	F	87
↓	M	94
↓	M	105

Station	TYPE	TIME
WWS 7	S	1550

SPP	SEX	SIZE
Slender	M	99
Slender	F	69

WWS 7	CRAB	Cont'd
Slender	M	73
↓	M	106

STATION	TYPE	TIME
WWS 8	C	1555

SPP	SEX	SIZE
Slender	F	76
↓	F (p)	78
↓	F (p)	70
↓	F (p)	81
↓	M	93
↓	M	92
DUNG	M	139
↓	M	141
↓	M	155
↓	M	114

(p) = gravid

Station	TYPE	TIME
WWS 8	S	1600

SPP	SEX	SIZE
Slender	M	88
↓	M	95

<u>Station</u>	<u>TYPE</u>	<u>TIME</u>
WWS9	C	1608

<u>SPP</u>	<u>SEX</u>	<u>SIZE</u>
Slender	M	94
DUNG	F	124
	M	152
	F	141
	M	130
	M	155
	F	110
	M	125
	M	136
	M	140

↓

<u>STATION</u>	<u>TYPE</u>	<u>TIME</u>
WWS9	S	1610

EMPTY

<u>STATION</u>	<u>TYPE</u>	<u>TIME</u>
WWS10	C	1620

<u>SPP</u>	<u>SEX</u>	<u>SIZE</u>
------------	------------	-------------

Slender		fell out of trap on retrieval
DUNG	M	145
	F	124
	M	158
Slender	M	95
	M	70
	M	88
	M	101

↓

STATION	TYPE	TIME
WWS10	S	1020

SP	SEX	SIZE
Slender	M	92

02/17/03 3rd Quarterly Cab/Shrimp Survey

Crew Bob Compton } Windward
Shannon Pierce }
Maryann Welsh }

Weather Overcast, cool

Deployment Phase

Station	Type	Time	Waypoint
WWS1	S	11:30	11
↳ Redeploy from 10/16/04			
WWS5	C	11:38	12
WWS5	S	11:38	12
↳ Redeploy from 10/16/04			
WWS11	C	11:50	13
WWS11	S	11:50	13
WWS12	C	11:57	14
WWS12	S	11:57	14
WWS13	C	12:05	15
WWS13	S	12:05	15

16 02/17/04

Deployment Phase Cont'd

Station	Type	Time	waypoint
WWS14	C	12:09	16
	S	12:09	16
WWS15	C	12:15	17
	S	12:15	17
WWS16	C	12:22	18
	S	12:22	18
WWS17	C	12:32	19
	S	12:32	19
WWS18	C	12:39	20
	S	12:39	20
WWS19	C	12:45	21
	S	12:45	21

Retrieval Phase

Bob Kaiser called from ACOE
and asked to move station
WWS6 traps due to in water
construction activities
Traps moved @ 13:35 to WPT 22

17

Station	Type	Time
WWS1	S	1540

Species	Sex	Type	Size
---------	-----	------	------

Sunstar

Station	type	time
WWS5	C	1545

Species	Sex	Size
Stender	M	96
	M	104
	F	78
	F (granid)	79
	F	78
	M	94
	M	90
	M	87
	M	64
	F	70

Station	Type	time
WWS5	S	1545

Species	Sex	Size
Slender	F	63
Dock SKAMP		81
Dock		69
↓		73

station	type	time
WWS11	C	1600

Species	Sex	Size
Slender	M	98
	M	88
	M	110
	F	63
	F	73
	F	73
	F (gravid)	68
DUNG	M	132

station	type	time
WWS11	S	1600

Species	Sex	Size
Slender		
DUNG	M	132
Slender	M	108
	M	93
	F	75
	F	68
	F	69
	F	68
Station	F	67

Station	type	time
WWS12	C	1613

Species	Sex	Size
Slender	F	dropped
	M	83
	M	101
	M	86
	M	98
	M	72

WWS12 cont'd (crabs)

Species	Sex	Size
Slender	F (gravid)	69
	M	87
	M	95
	M	96
	M	82
	F	77
	M	86
	M	85
	M	80
	M	69

Station	type	time
WWS12	S	1616

Species	Sex	Size
Slender	M	85
	M	93
	M	84
	M	87
	F	60

station	type	time
WWS13	C	1627

Species	Sex	Size
Slender	M	99
	F (gravid)	70
	M	89
	F	82
	M	85
	F (gravid)	65
	F	78
	F (gravid)	70
	F (gravid)	73
	M	63
	M	69
	M	67
	M	155

DUNG

<u>Station</u>	<u>type</u>	<u>time</u>
WWS13	S	1628

<u>Species</u>	<u>sex</u>	<u>size</u>
----------------	------------	-------------

slender ↓	F (grand)	74
	M	89
	F	61
	F	74

<u>STATION</u>	<u>TYPE</u>	<u>TIME</u>
WWS14	C	1637

<u>Species</u>	<u>sex</u>	<u>size</u>
----------------	------------	-------------

slender ↓	F	} fell overboard			
	F				
	M				
	M	75	cont'd slender ↓	M	81
	M	63		M	74
	M	72		M	83
	M	88		M	67
M	74				
M	94				

<u>Station</u>	<u>type</u>	<u>time</u>
WWS14	S	1637

<u>Species</u>	<u>sex</u>	<u>size</u>
----------------	------------	-------------

slender ↓	M	83
	M	83
	M	88
	M	67
	M	86
	M	73
	M	77
	M	92
	F	70
	F	74
F	58	

<u>station</u>	<u>type</u>	<u>time</u>
WWS 15	C	1649

<u>species</u>	<u>sex</u>	<u>size</u>
----------------	------------	-------------

Slender	M	101
---------	---	-----

	M	95
--	---	----

	M	92
--	---	----

	M	98
--	---	----

	M	99
--	---	----

	M	94
--	---	----

	M	99
--	---	----

	M	67
--	---	----

	F	76
--	---	----

	M	98
--	---	----

	M	145
--	---	-----

↓
DUNG

<u>station</u>	<u>type</u>	<u>time</u>
WWS 15	S	1651

<u>species</u>	<u>sex</u>	<u>size</u>
----------------	------------	-------------

Slender	F	64
---------	---	----

<u>station</u>	<u>TYPE</u>	<u>TIME</u>
WWS 16	S	1657

<u>Species</u>	<u>sex</u>	<u>size</u>
----------------	------------	-------------

Slender	M	85
---------	---	----

	M	108
--	---	-----

	M	95
--	---	----

	M	96
--	---	----

	M	94
--	---	----

	F	78
--	---	----

	?	fell out
--	---	----------

Station
WWS 16

Type
C

Time
1701

Species
Slender

Sex

Size

M

98

M

101

F

79

M

76

M

93

M

103

M

104

M

92

M

87

M

79

F

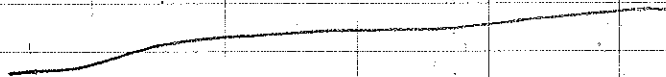
71

F

79

F

74



Station
WWS 17

Type
S

Time
1711

Species
Slender

Sex

Size

M

101

Station
WWS 17

Type
C

Time
1715

Species
Slender

Sex

Size

M

90

M

92

M

91

M

101

M

96

M

100

M

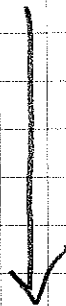
90

F

73

F

137



DUNG

<u>Station</u>	<u>type</u>	<u>time</u>
WWS 18	S	1720

<u>Species</u>	<u>Sex</u>	<u>SIZE</u>
Slender	M	91
	M	98
	F	75

WWS 18	C	1727
--------	---	------

<u>Species</u>	<u>Sex</u>	<u>SIZE</u>
Slender	M	99
	M	91
	M	77
	M	90
	M	101
	F (grand)	79
	M	89
	M	94
	F	80
	M	108
	M	98
	F	64
	F (grand)	61

→ Cont'd
 DUNG M 108
 DUNG M 93

<u>Station</u>	<u>type</u>	<u>time</u>
WWS 19	S	1732

<u>Species</u>	<u>Sex</u>	<u>SIZE</u>
Slender	F	89
	M	98

<u>Station</u>	<u>type</u>	<u>time</u>
WWS 19	C	1736

<u>Species</u>	<u>Sex</u>	<u>SIZE</u>
Slender	M	94
	M	78
	M	98
	M	93
	M	91
	M	101
	F	87
	M	96
	F	84
	F	79
	F	66
	M	92
	M	97

WWS 19 cont'd

SP#	Sex	Size
19	M	90
	M	95
	M	93
	M	99
	M	103
	M	95
	M	102
	M	96
	M	91
	M	100
	M	97
	M	98
	M	101
	M	94

02-18-04 3rd Quarterly Crab/Shrimp Survey

CREW Bob Complita }
 Joanna Florer } Windward
 Thri Do }
 Weather Overcast + Sun Brakes
 Deployment Phase

Station	Type	Time	Wt/pt.
WWS 20	C	12:45	23
	S	12:45	23
WWS 21	C	12:55	24
	S	12:55	24
WWS 22	C	13:07	26
	S	13:07	26
WWS 23	C	13:00	25
	S	13:00	25
WWS 24	C	13:15	27
	S	13:15	27
WWS 25	C	13:21	28
	S	13:21	28
WWS 26	C	13:28	29
	S	13:28	29

Kessels on station 26 moved ~~station~~ station

02-18-04

Deployment
Cont'd

Station	Type	Time	Waypt.	
WWS27	C	1340	30	Barge on Station as light moved Station
	S	1346	30	
WWS28	C	1348	31	
	S	1348	31	
WWS29	C	14:00	32	
	S	14:00	32	

Retrieval Phase

Station	Time	Type	Spp	Sex	Length (mm)
WWS20	1647	Crab	Slender	F	76
				M	102
				M	99
				M	101
				M	88
				M	99
				M	99
				M	76
				M	100
				M	91
				M	81
			Slender		93

2/18/04

Station	Time	Type	Spp	Sex	Length (mm)
WWS20	1649	Shrimp	Slender	M	85
			Slender	M	83
			Slender	M	85
WWS21	1659	Crab	Slender	UNK	UNK (fell over)
				UNK	UNK
				M	97
				M	92
				F	79
				M	76
				M	86
				M	91
				M	94
				M	86
				M	87
			Slender	M	90

WWS21 cont

2/18/04

<u>Spp</u>	<u>Sex</u>	<u>length (mm)</u>
slender	M	85
Slender	F	77
Slender	F-gravid	66

<u>Station</u>	<u>time</u>	<u>type</u>
WWS21	1702	Shrimp

<u>Spp</u>	<u>Sex</u>	<u>length</u>
slender	M	92
	M	76
	F-gravid	79
slender	F	67

<u>station</u>	<u>time</u>	<u>type</u>
WWS23	1709	Crab

<u>Spp</u>	<u>Sex</u>	<u>length (mm)</u>
slender	UNK	UNK
	UNK	UNK
	M	91
	F	80
Slender	M	95
	M	80

2/18/04

<u>Spp</u>	<u>Sex</u>	<u>length (mm)</u>
slender	M (eroded carapace)	79
	F	71
	F	68
	M	100
	F	86
	M	72
	M	99
	F-gravid	75

<u>Station</u>	<u>time</u>	<u>length (mm)</u>
WWS23	1709	Shrimp

<u>Spp</u>	<u>Sex</u>	<u>length (mm)</u>
Slender	M	91
Slender	M	107
Slender	F-gravid	68

station: WWS22 time: 1720

<u>Spp</u>	<u>type</u>	<u>Sex</u>	<u>length (mm)</u>
Slender	S	M	98
Perch	S	UNK	25-50
slender	C	M	97
slender	C	M	72
slender	C	M	60

36 2/18/04

station: wws22 cont

SPP	type	sex	length(mm)
slender	c	M	55

Station: wws24 time: 1728

type	SPP	sex	length(mm)
S	nothing		
C	dung	M	133
C	slender	M	102
C	slender	M	86
C	slender	M	87
C	slender	M	80
C	slender	M	71

Station: wws25 time: 1735

type	SPP	sex	length(mm)
C	nothing		
S	nothing		

2/18/04

37

station: wws26 time: 1740

type	SPP	sex	length(mm)
S	slender	M	95
S	slender	M	99
S	slender	M	104
S	slender	M	98
S	slender	M	68
S	shore crab	M	35
C	slender	M	108
C	slender	M	83
C	slender	M	81
C	slender	M	73

station: wws27 time: 1750

type	SPP	sex	length(mm)
S	nothing		
C	Dung	M	153

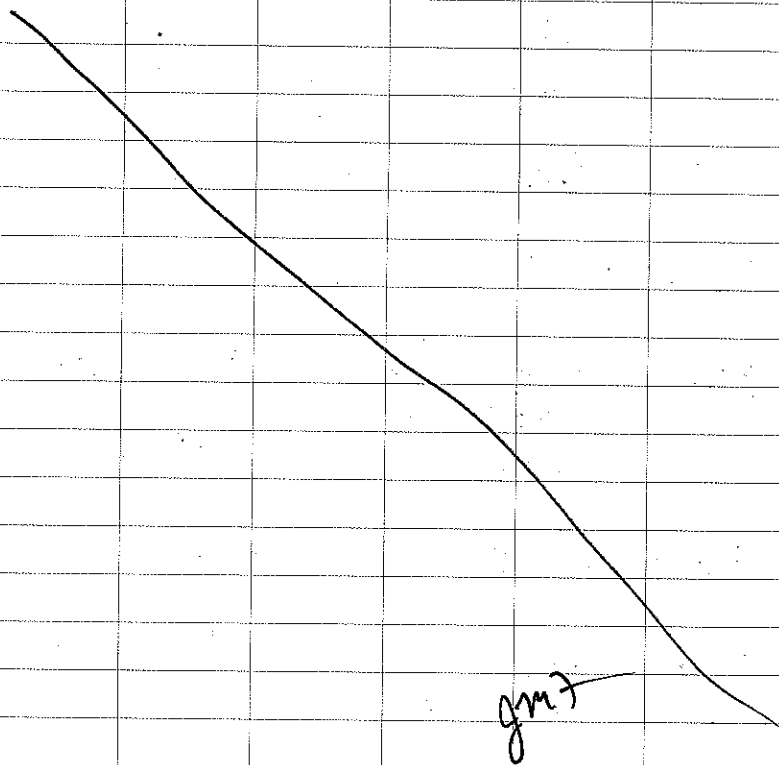
station: wws28 time: 1756

type	SPP	sex	length(mm)
S	nothing		
C	slender	F	69

38 2/18/04

Station: WWS29 time: 1802

type	SPP	sex	length (mm)
C	Dung	M	147
C	Dung	F	131
C	Dung	M	137
S	Nothing		

2/19/04 3rd Quarter Crab/Strips Survey 39

Crew: Bob Complitz }
 Derek Palletier } Windward
 Cindy Jackson }

Weather: Overcast, Cool

Deployment Phase

Station	Type	Time	Waypoint
WWS30	C	13:30	33
	S	13:30	33
WWS31	C	13:45	34
	S	13:45	34
WWS32	C	13:52	35
	S	13:52	35
WWS33	C	14:00	36
	S	14:00	36
WWS34	C	14:10	37
	S	14:10	37
WWS35	C	14:15	38
	S	14:15	38
WWS36	C	14:20	39
	S	14:20	39

02/19/04 Deployment Cont'd

Station	Type	Time	wpt.
wws37	C	14:27	40
	S	14:27	40
wws38	C	14:37	41
	S	14:37	41

Retrieval Phase

Station: WWS30 Time: 17:30

Type	Species	Sex	Length (mm)
S	empty		
C	Dung	M	154

Station WWS31 Time: 17:36

Type	Species	Sex	Length
S	empty		
C	Dung	M	138
C	Dung	M	142
C	Dung	M	156

2/19/04 Retrieval Cont

Station: WWS32 Time: 17:44

Type	Species	Sex	Length
C	Dung	M	142
C	Dung	M	155
C	Dung	M	143
C	Dung	M	155
C	Dung	M	161
C	Dung	M	160
C	Dung	M	150
S	empty		

Station: WWS33 Time: 17:55

Type	Species	Sex	Length
S	empty		
C	Dung	M	157
C	Dung	M	156
C	Dung	M	140
C	Dung	M	123

Station WWS34 Time 18:08

Type	Species	Sex	length
C	empty		
S	empty		

station: WWS35 Time 18:15

Type	Species	Sex	length
C	empty		
S	empty		

Station: WWS36 Time: 18:22

Type	Species	Sex	length
C	empty		
S	empty		

Station: WWS37 time: 18:28

Type	Species	Sex	length
C	empty		
S	empty		

Station: WWS38 Time: 18:37

Type	Species	Sex	length
C	empty		
S	empty		

