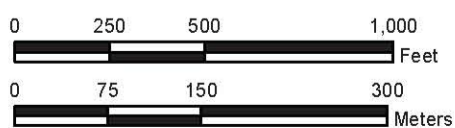


Figure G-1. Historical surface sediment sampling locations for the Lower Duwamish waterway (RM 0.0-1.2)



WindWard
environmental LLC

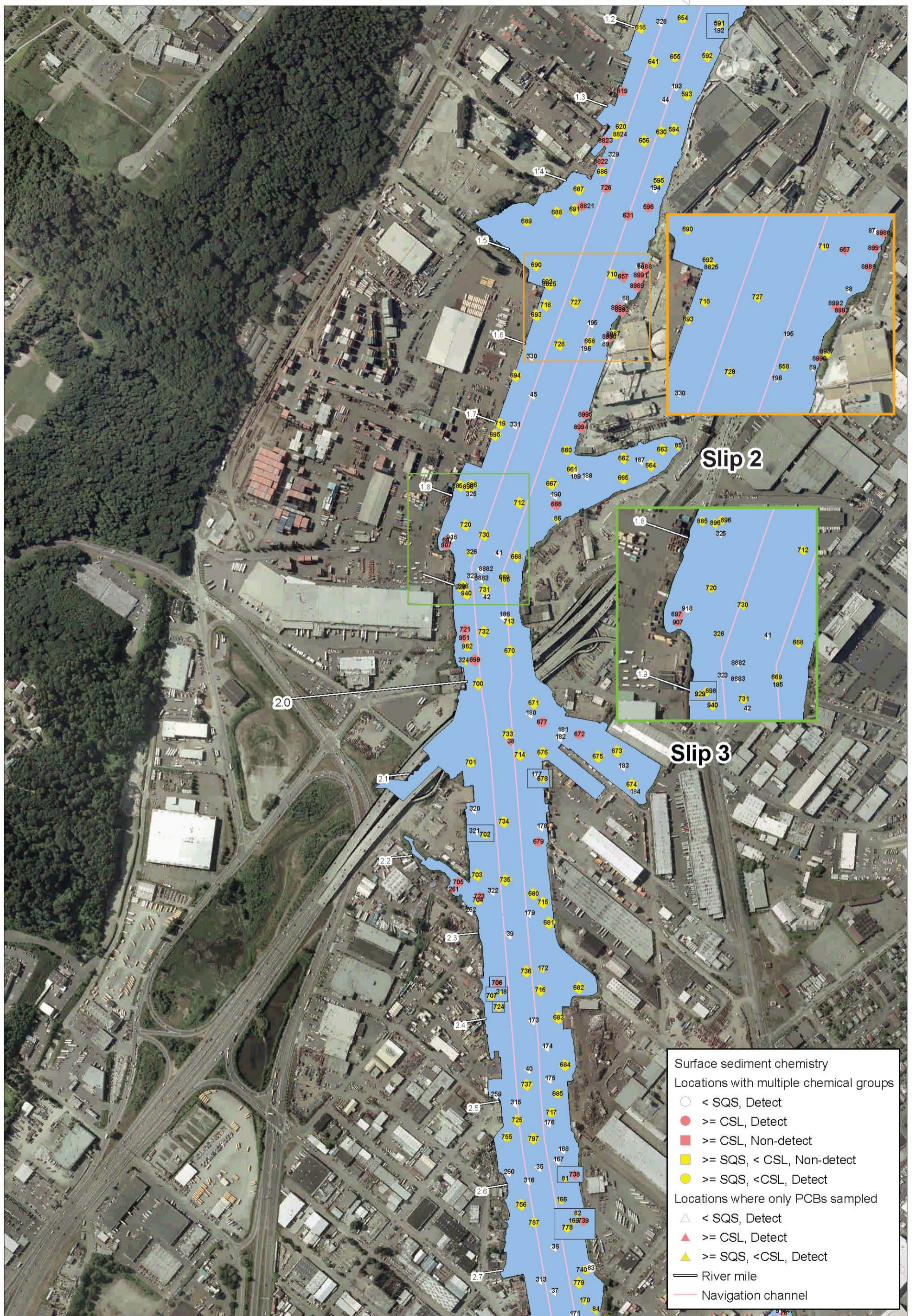


Figure G-2. Historical surface sediment sampling locations for the Lower Duwamish waterway (RM 1.2-2.7)



WindWard
environmental LLC

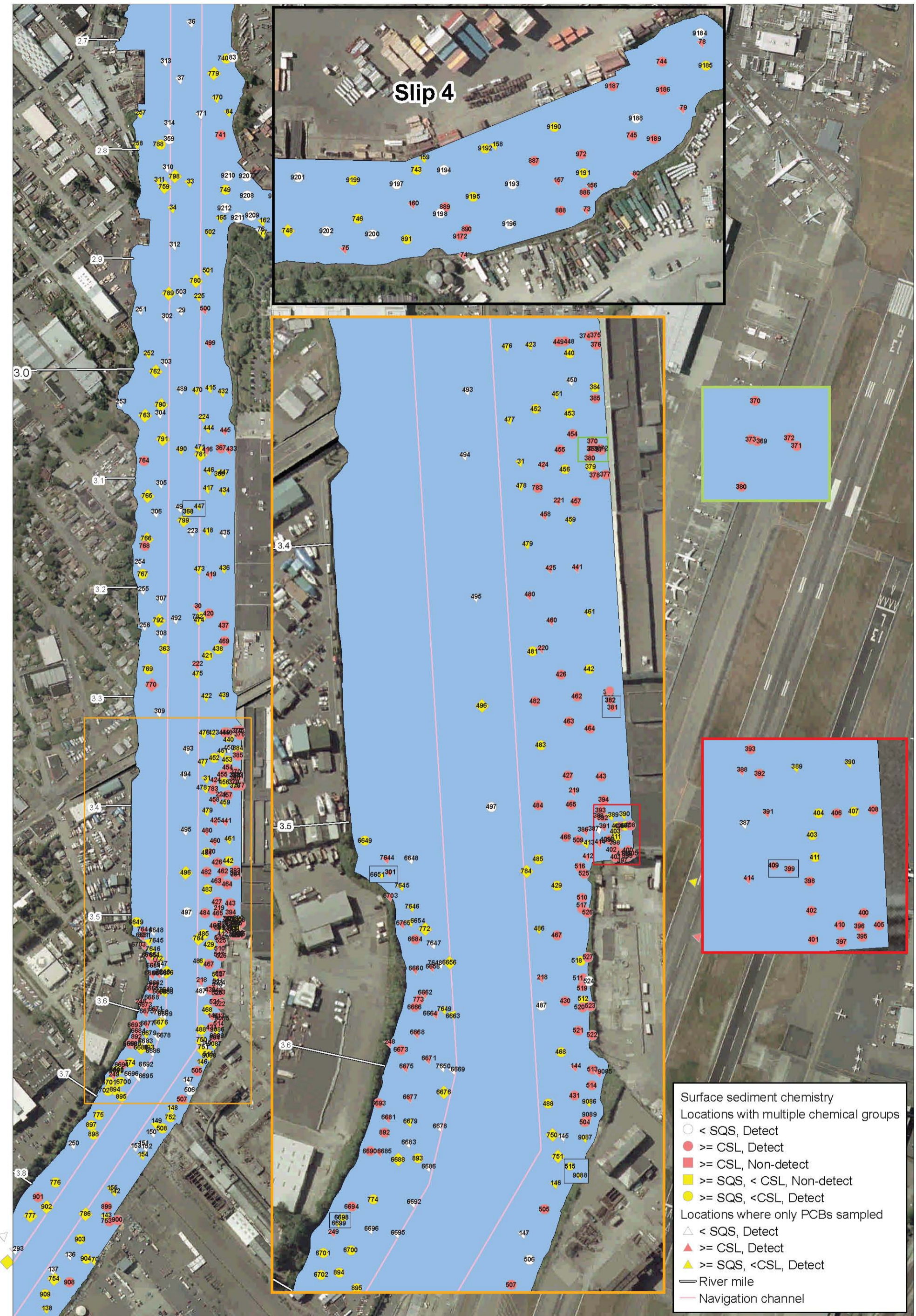
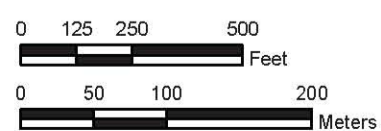


Figure G-3. Historical surface sediment sampling locations for the Lower Duwamish waterway (RM 2.7-3.8)



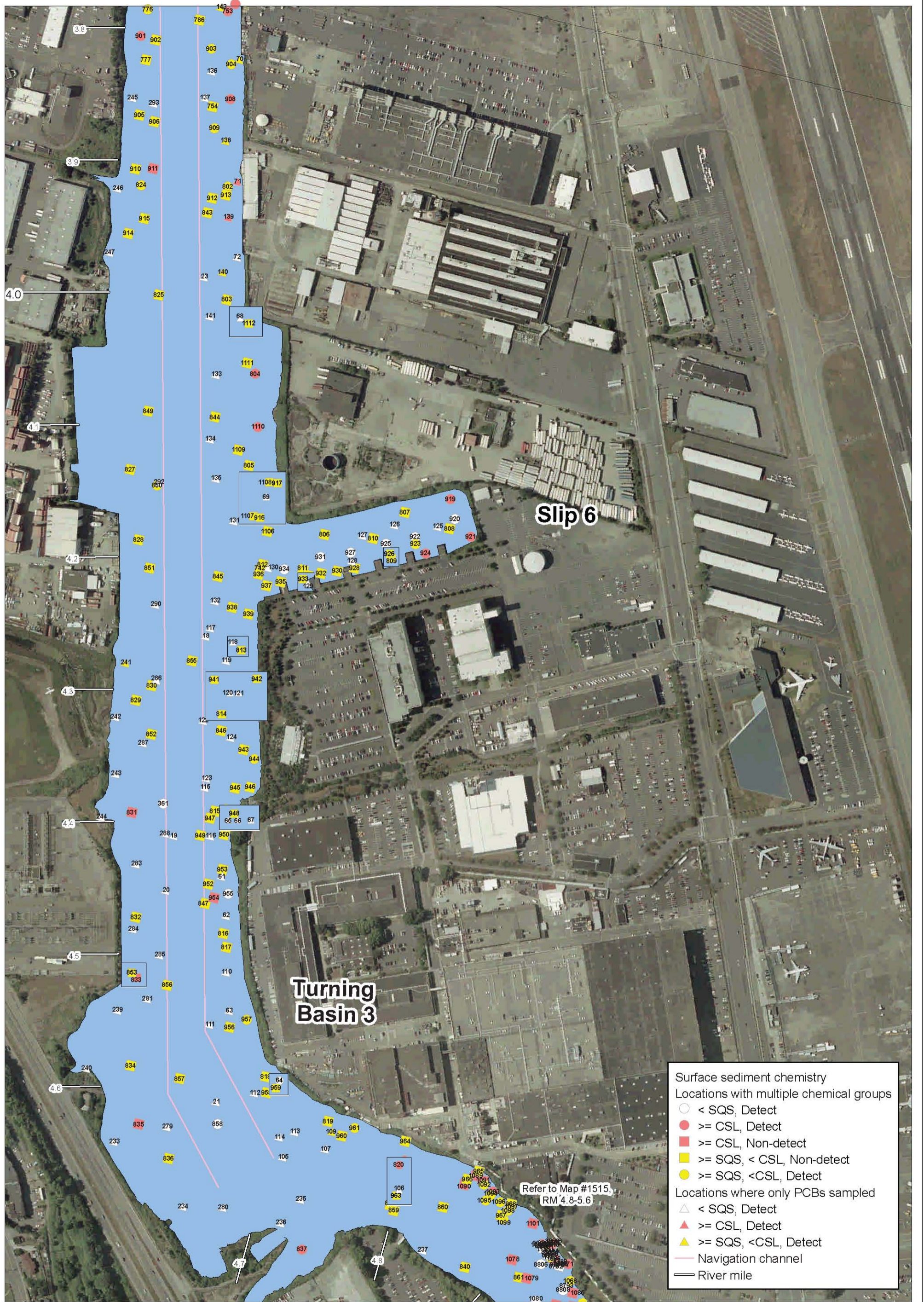


Figure G-4. Historical surface sediment sampling locations for the Lower Duwamish waterway (RM 3.8-4.8)



- Surface sediment chemistry
 Locations with multiple chemical groups
- < SQS, Detect
 - ≥ CSL, Detect
 - ≥ CSL, Non-detect
 - ≥ SQS, < CSL, Non-detect
 - ≥ SQS, < CSL, Detect
- Locations where only PCBs sampled
- △ < SQS, Detect
 - ▲ ≥ CSL, Detect
 - ▲ ≥ SQS, < CSL, Detect
- Navigation channel
 - River mile



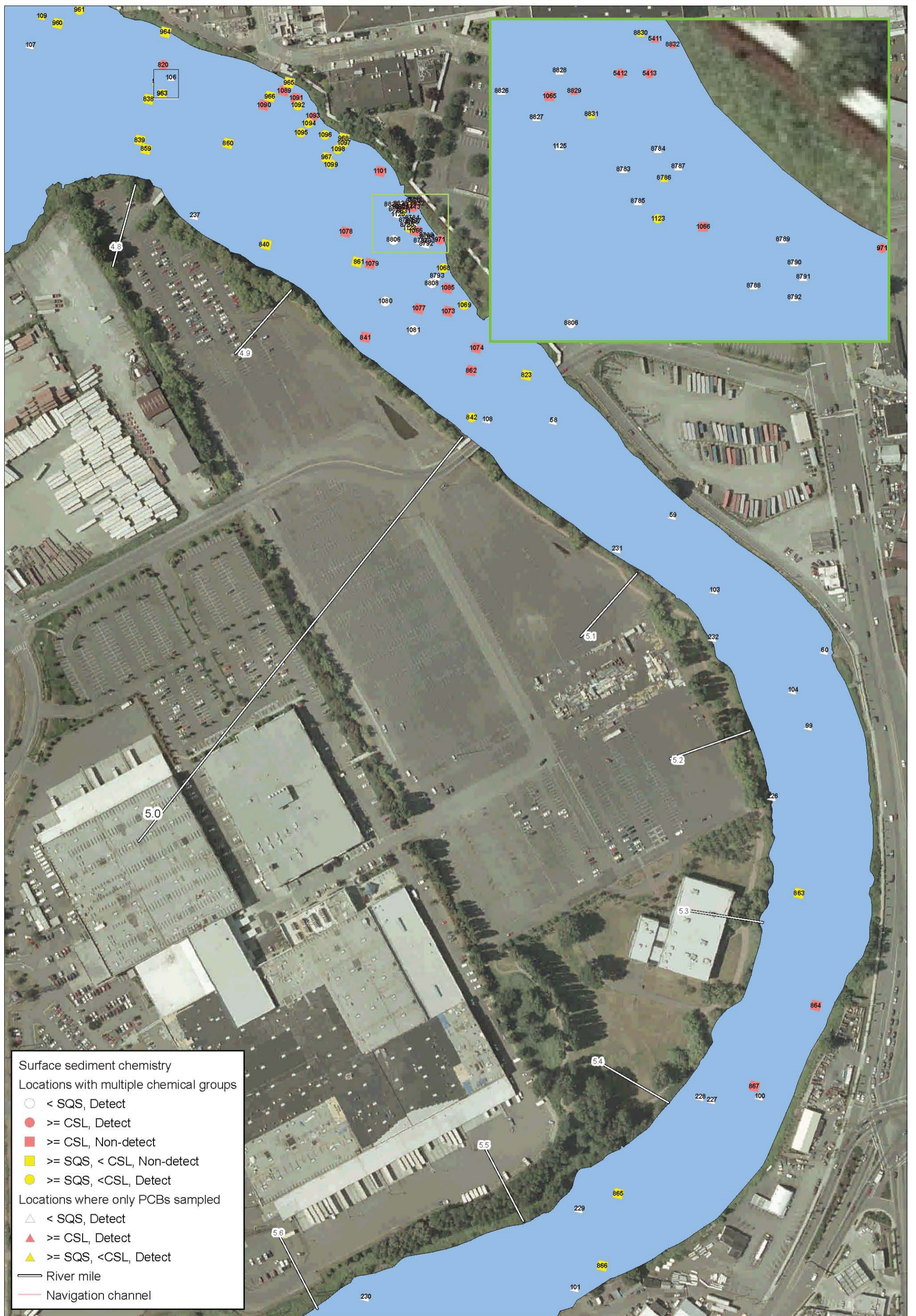


Figure G-5. Historical surface sediment sampling locations for the Lower Duwamish waterway (RM 4.8-5.6)



WindWard
environmental LLC