

APPENDIX F: GRAPHICAL REPRESENTATIONS OF PCB DATA

<i>Table F-1. Fish tissue total PCBs calculated as total Aroclors and total congeners and mammalian TEQ values</i>	1
<i>Table F-2. Crab tissue total PCBs calculated as total Aroclors and total congeners and mammalian TEQ values</i>	3
<i>Figure F-1. Total PCBs (sum of detected Aroclors) vs. total PCBs (sum of detected congeners) in fish tissue samples (fillets and whole body)</i>	4
<i>Figure F-2. Percent contribution of concentrations of selected PCB congeners to the sum of the concentrations of all detected PCB congeners for English sole and starry flounder tissue samples</i>	5
<i>Figure F-3. Percent contribution of concentrations of selected PCB congeners to the sum of the concentrations of all detected PCB congeners for pile perch, striped perch and shiner surf perch tissue samples</i>	6
<i>Figure F-4. Percent contribution of concentrations of selected PCB congeners to the sum of the concentrations of all detected PCB congeners in Pacific staghorn sculpin samples (whole body)</i>	7
<i>Figure F-5. Total PCBs (sum of detected PCB congeners) vs. mammalian TEQ (full RL) in fish tissue samples (fillet and whole body)</i>	8
<i>Figure F-6. Total PCBs (sum of detected Aroclors) vs. total PCBs (sum of detected congeners) in crab tissue samples (edible meat and hepatopancreas)</i>	9
<i>Figure F-7. Percent contribution of concentrations of selected PCB congeners to the sum of the concentrations of all detected PCB congeners in crab tissue samples (edible meat and hepatopancreas)</i>	10
<i>Figure F-8. Total PCBs (sum of detected PCB congeners) vs. mammalian TEQ (full RL) in crab tissue samples (edible meat and hepatopancreas)</i>	11

Table F-1, Fish tissue, cont.

Table F-1. Fish tissue total PCBs calculated as total Aroclors and total congeners and mammalian TEQ values

SPECIES TISSUE TYPE/SAMPLE ID	PCBs (TOTAL AROCLORS) (µg/kg ww)	PCBs (TOTAL CONGENERS) (µg/kg ww)	MAMMALIAN TEQ (HALF RL) (ng/kg ww)
English sole fillet			
LDW-T1-M-ES-FL-comp-1	1,600	1,119.2 J	22.0
LDW-T1-M-ES-FL-comp-2	1,330	857.5 J	15.5
LDW-T2-M-ES-FL-comp-1	2,010	1,269 J	22.7
LDW-T2-M-ES-FL-comp-2	1,840	1,264.6 J	24.4
LDW-T3-M-ES-FL-comp-1	850	641.1 J	9.77 J
LDW-T3-M-ES-FL-comp-2	1,640	1,022.9 J	17.8
LDW-T4-M-ES-FL-comp-1	710	510 J	7.88 J
Pile perch fillet			
LDW-M-M-PP-FL-comp-1	300	192.2 J	4.83 J
Starry flounder fillet			
LDW-T4-M-SF-FL-comp-1	450	295.2 J	5.40 J
Striped perch fillet			
LDW-M-M-SP-FL-comp-1	630	442.3 J	11.3 J
English sole whole body			
LDW-T1-M-ES-WB-comp-2	3,000	1,614 J	33.1
LDW-T1-M-ES-WB-comp-4	4,200	2,481 J	45.5
LDW-T2-M-ES-WB-comp-3	4,200 J	2,712 J	45.8
LDW-T2-M-ES-WB-comp-5	3,900	2,126 J	34.4
LDW-T3-M-ES-WB-comp-2	1,870	1,419 J	23.8 J
LDW-T3-M-ES-WB-comp-3	4,300	2,457 J	29.5 J
LDW-T4-M-ES-WB-comp-1	1,800	1,361 J	22.1
Pacific staghorn sculpin whole body			
LDW-T1-D-PS-WB-comp-1	750	532.4 J	11.0 J
LDW-T1-F-PS-WB-comp-1	860	668.5 J	14.2 J
LDW-T2-C-PS-WB-comp-1	660 J	481.6 J	10.9 J
LDW-T2-F-PS-WB-comp-1	720	496.3 J	11.9
LDW-T3-D-PS-WB-comp-1	2,800	1,907 J	24.4
LDW-T3-E-PS-WB-comp-1	1,180	1,048 J	15.8
LDW-T4-C-PS-WB-comp-1	510	349.6 J	7.23 J
LDW-T4-D-PS-WB-comp-2	710	504.9 J	9.84 J

Table F-1, Fish tissue, cont.

SPECIES TISSUE TYPE/SAMPLE ID	PCBs (TOTAL AROCLORS) (µg/kg ww)	PCBs (TOTAL CONGENERS) (µg/kg ww)	MAMMALIAN TEQ (HALF RL) (ng/kg ww)
Shiner surfperch whole body			
LDW-T1-A-SS-WB-comp-1	970	700.1 J	16.0 J
LDW-T1-F-SS-WB-comp-1	1,460	876.6 J	25.7
LDW-T2-B-SS-WB-comp-1	1,570	1,055 J	33.7
LDW-T2-E-SS-WB-comp-1	18,400 J	12,228 J	200
LDW-T3-C-SS-WB-comp-1	1,410	1,009 J	22.3
LDW-T3-E-SS-WB-comp-1	8,800	8,010 J	62.2
LDW-T3-F-SS-WB-comp-1	4,900	3,522 J	55.2
LDW-T4-B-SS-WB-comp-1	960	770 J	18.8 J
LDW-T4-D-SS-WB-comp-1	710	532.4 J	13.6 J
Starry flounder whole body			
LDW-T4-M-SF-WB-comp-1	660	458 J	7.94 J

Table F-2. Crab tissue total PCBs calculated as total Aroclors and total congeners and mammalian TEQ values

SPECIES TISSUE TYPE/SAMPLE ID	PCBs (TOTAL AROCLORS) (µg/kg ww)	PCBs (TOTAL CONGENERS) (µg/kg ww)	MAMMALIAN TEQ (HALF RL) (ng/kg ww)
Dungeness crab hepatopancreas			
LDW-T3-M-DC-HP-comp-1	4,500	3,622 J	66.4
LDW-T4-M-DC-HP-comp-1	5,500	3,618 J	56.7
Slender crab hepatopancreas			
LDW-T1-M-SC-HP-comp-1	1,490 J	790.1 J	26.3
LDW-T2-M-SC-HP-comp-2	2,190 J	1,047.1 J	23.7
Dungeness crab edible meat			
LDW-T1-M-DC-EM-comp-2	206 J	111 J	2.49 J
LDW-T3-M-DC-EM-comp-1	226	149.3 J	3.01
LDW-T4-M-DC-EM-comp-1	240 J	148.7 J	2.54
Slender crab edible meat			
LDW-T1-M-SC-EM-comp-2	220	174.7 J	4.91
LDW-T2-M-SC-EM-comp-5	230 J	180.6 J	4.62 J
LDW-T2-M-SC-EM-comp-6	180 J	129.7 J	3.17 J
LDW-T3-M-SC-EM-comp-2	168	134.3 J	3.24 J

Figure F-1. Total PCBs (sum of detected Aroclors) vs. total PCBs (sum of detected congeners) in fish tissue samples (fillets and whole body)

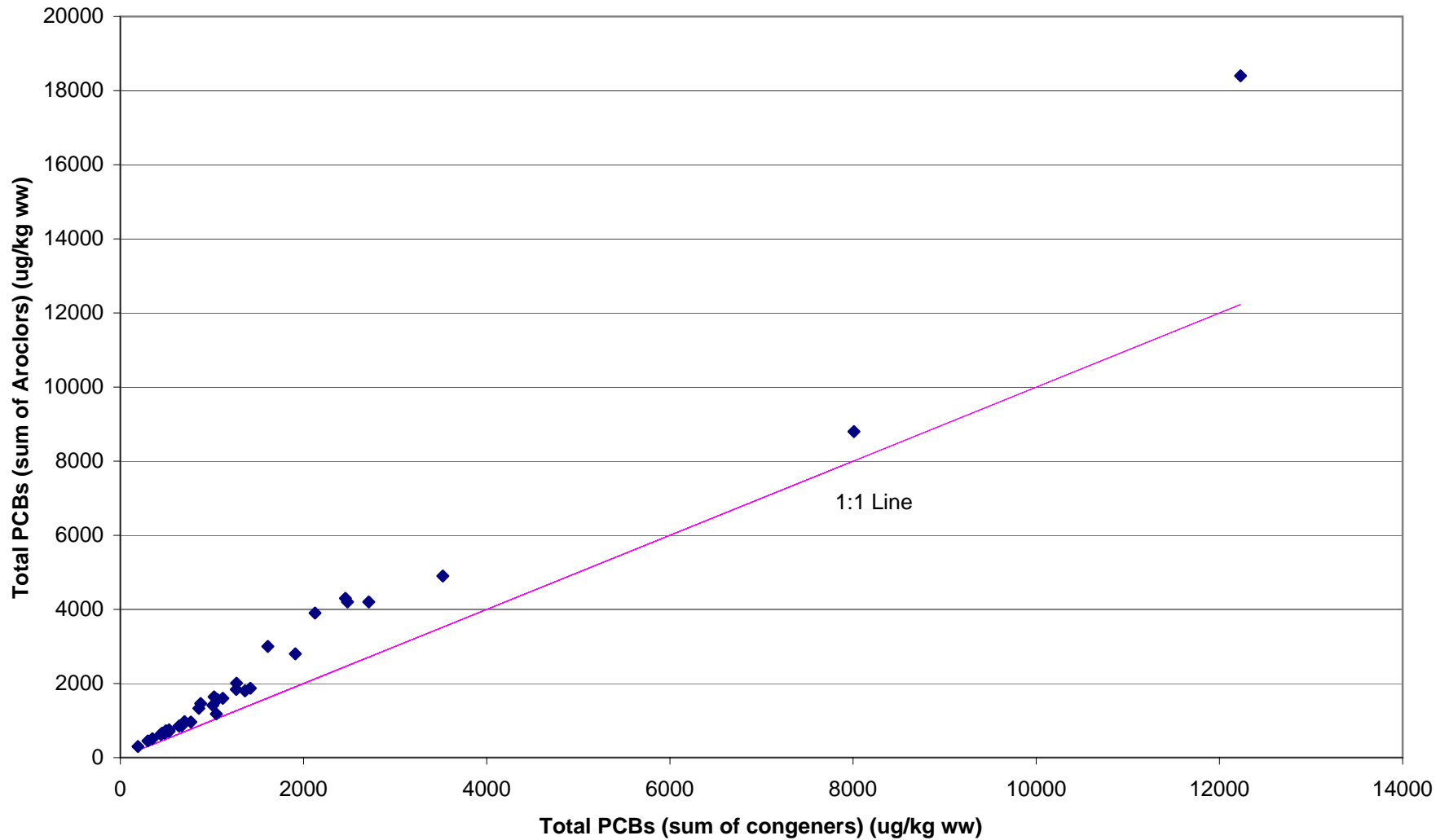


Figure F-2. Percent contribution of concentrations of selected PCB congeners to the sum of the concentrations of all detected PCB congeners for English sole and starry flounder tissue samples

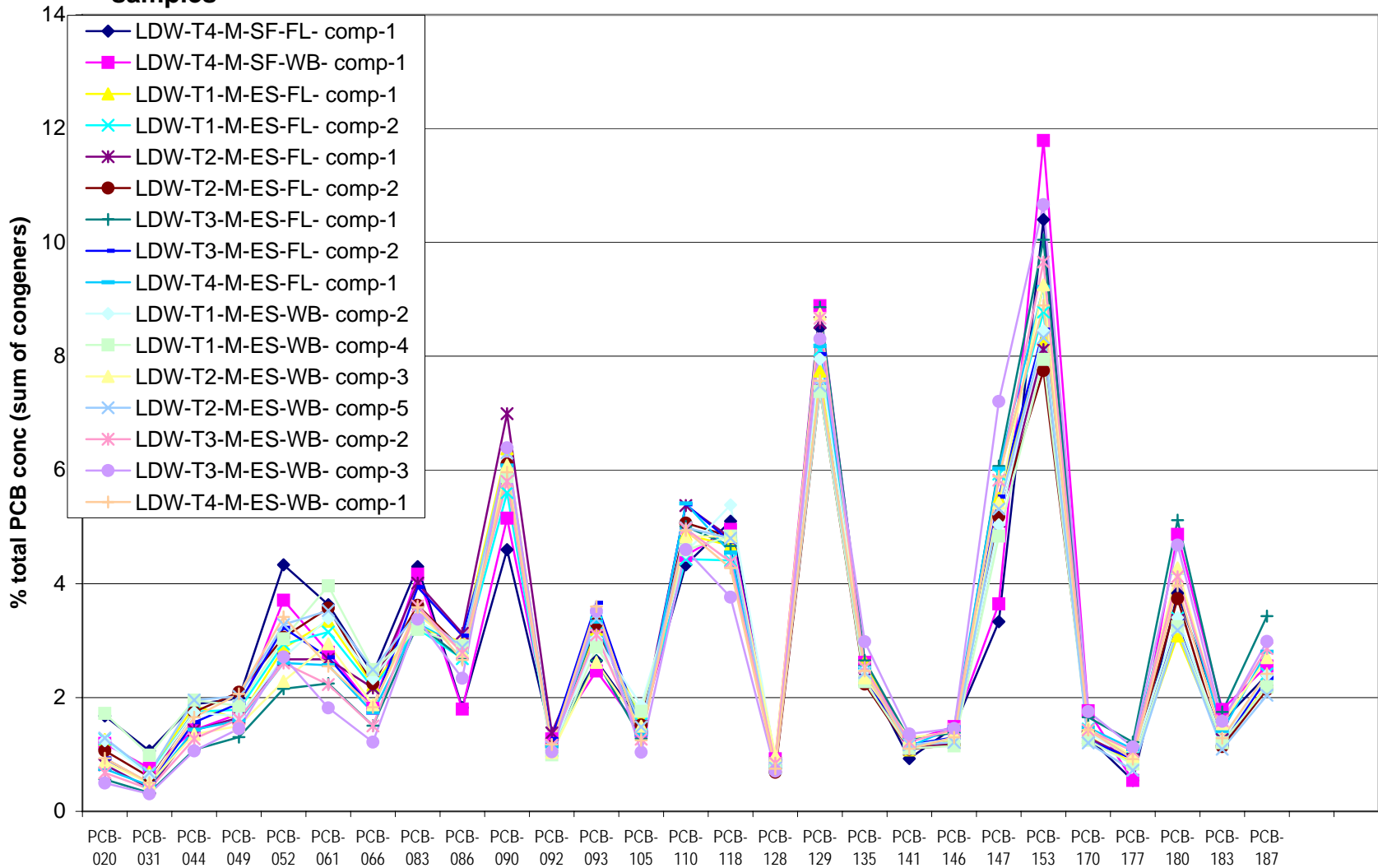


Figure F-3. Percent contribution of concentrations of selected PCB congeners to the sum of the concentrations of all detected PCB congeners for pile perch, striped perch and shiner surf perch tissue samples

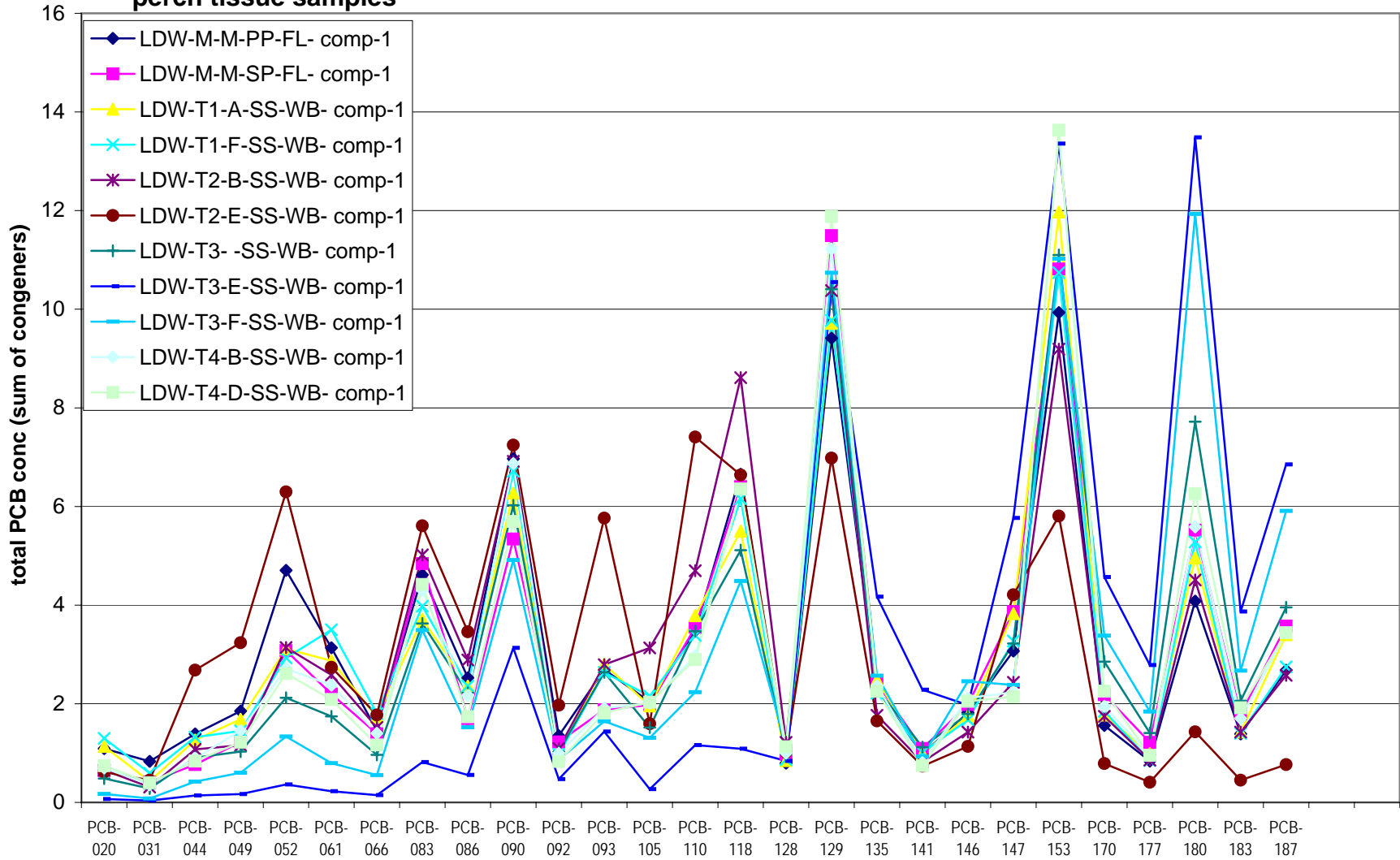


Figure F-4. Percent contribution of concentrations of selected PCB congeners to the sum of the concentrations of all detected PCB congeners in Pacific staghorn sculpin samples (whole body)

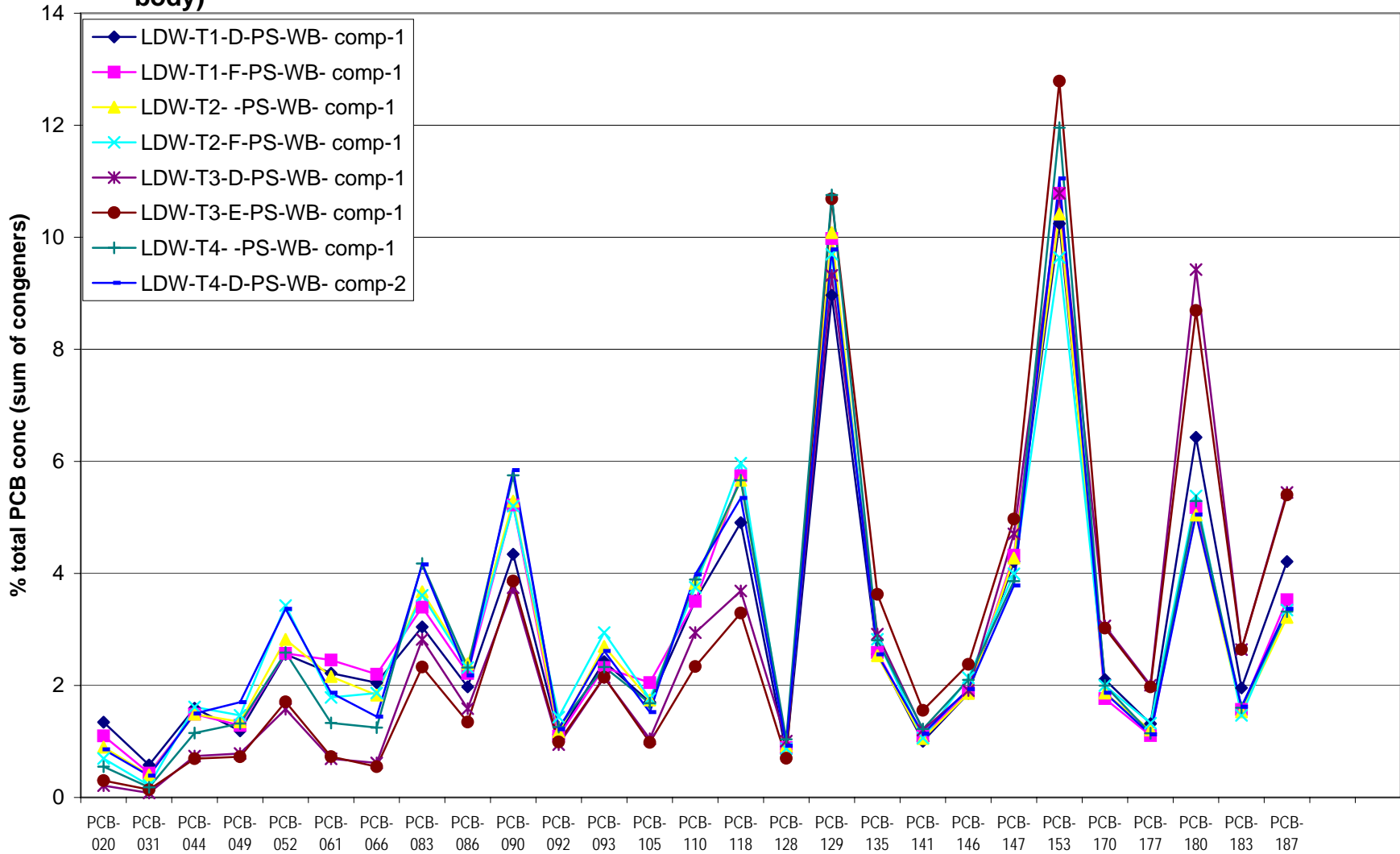


Figure F-5. Total PCBs (sum of detected PCB congeners) vs. mammalian TEQ (full RL) in fish tissue samples (fillet and whole body)

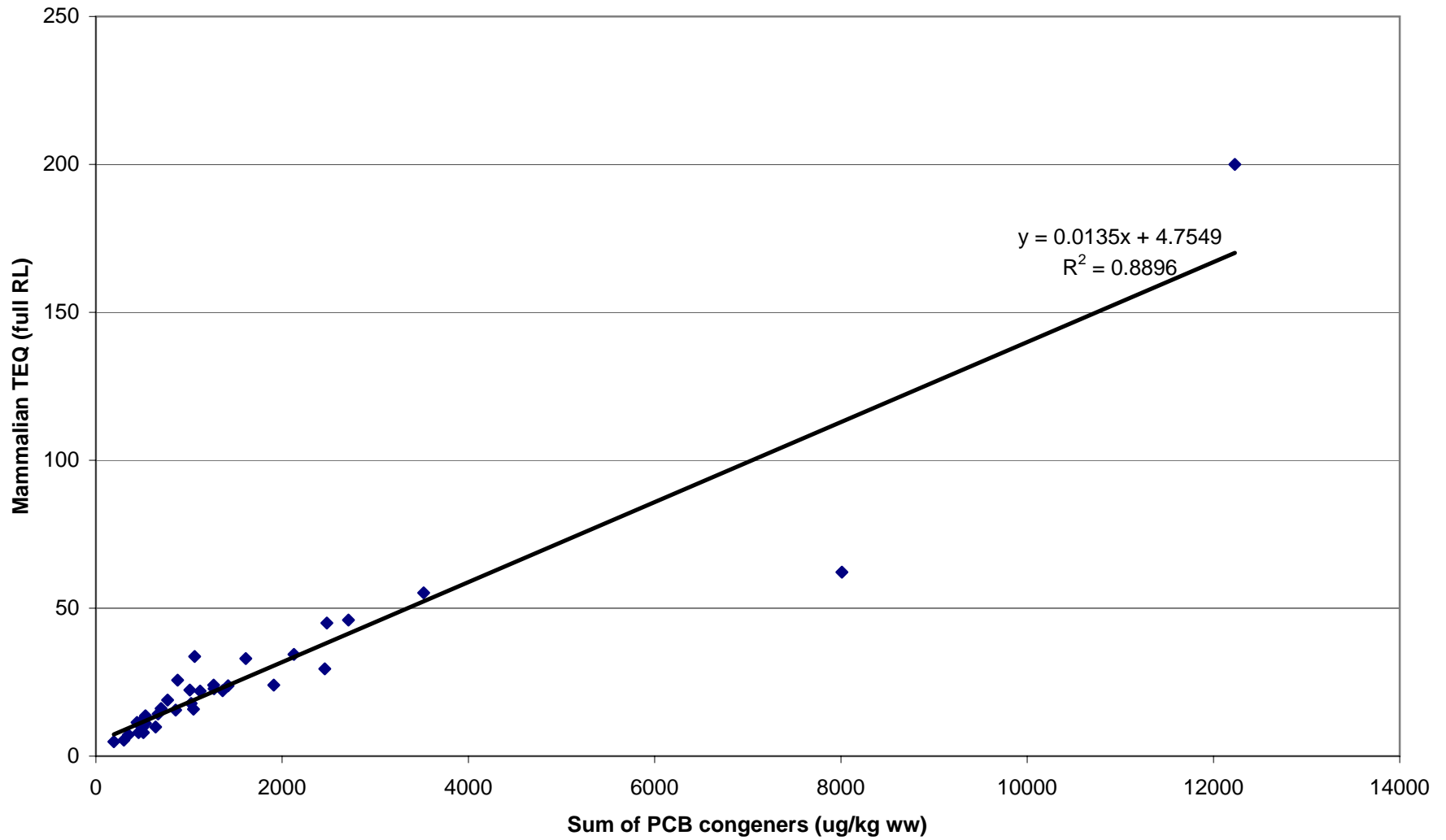


Figure F-6. Total PCBs (sum of detected Aroclors) vs. total PCBs (sum of detected congeners) in crab tissue samples (edible meat and hepatopancreas)

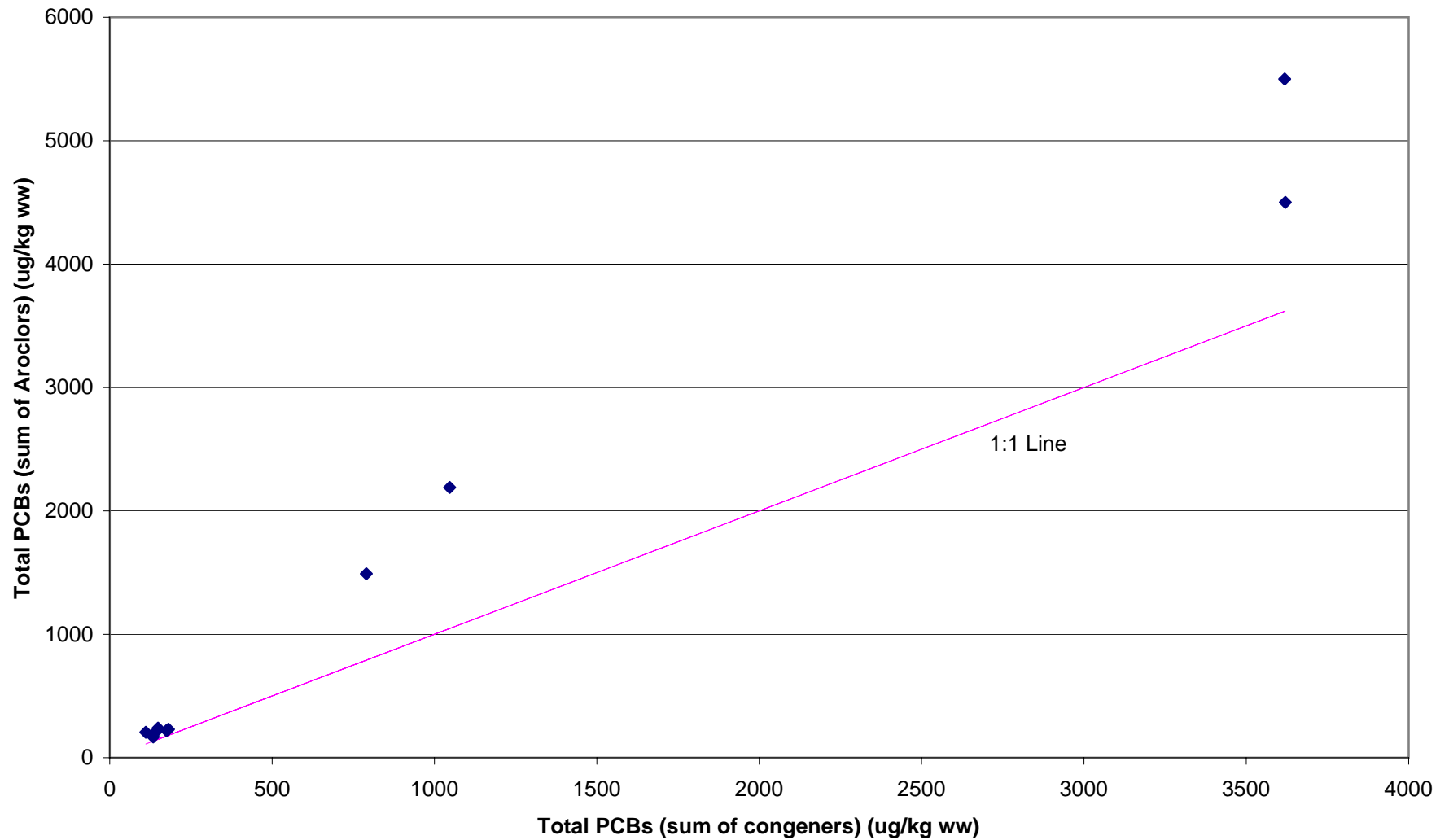


Figure F-7. Percent contribution of concentrations of selected PCB congeners to the sum of the concentrations of all detected PCB congeners in crab tissue samples (edible meat and hepatopancreas)

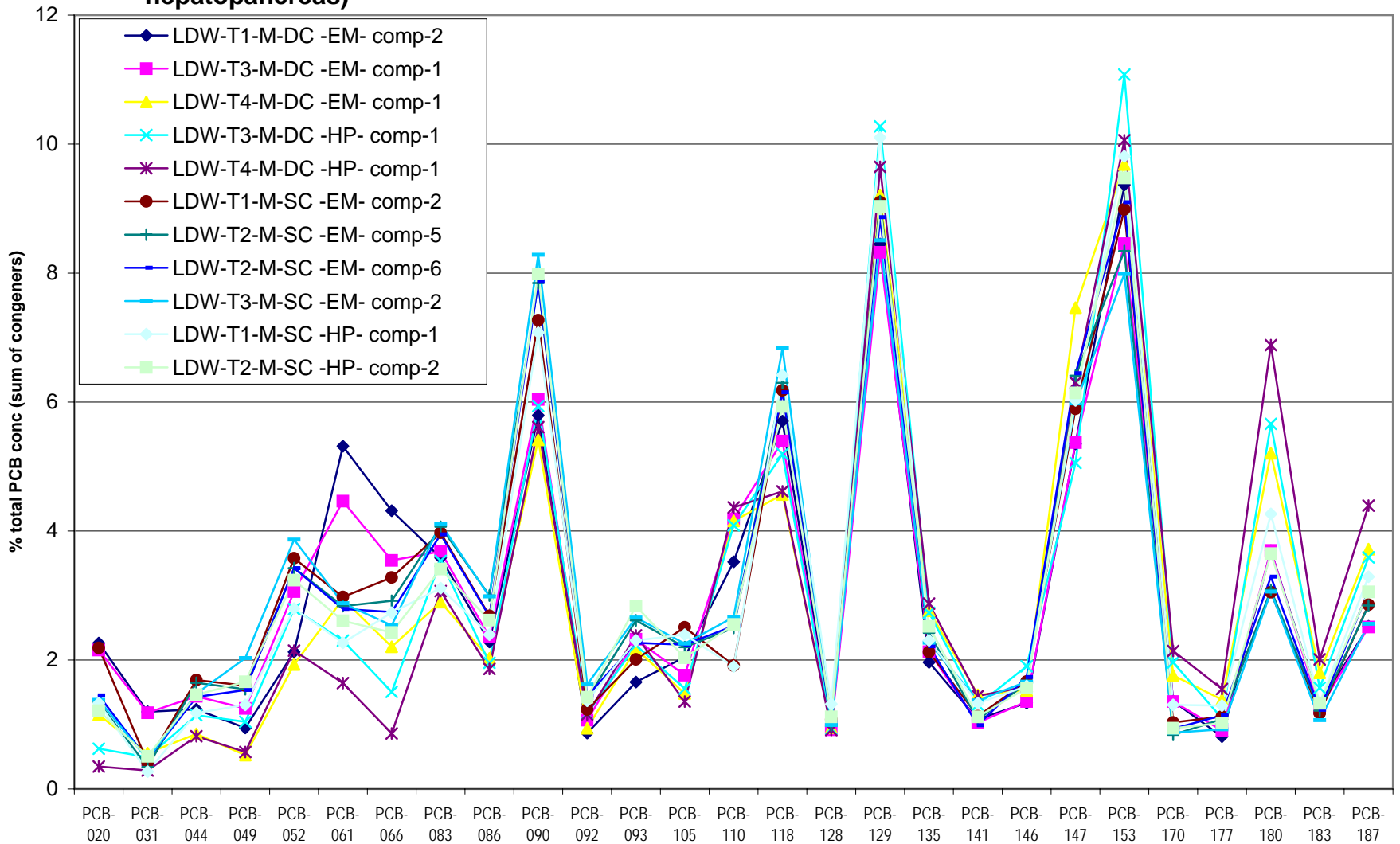


Figure F-8 Total PCBs (sum of detected PCB congeners) vs. mammalian TEQ (full RL) in crab tissue samples (edible meat and hepatopancreas)

